

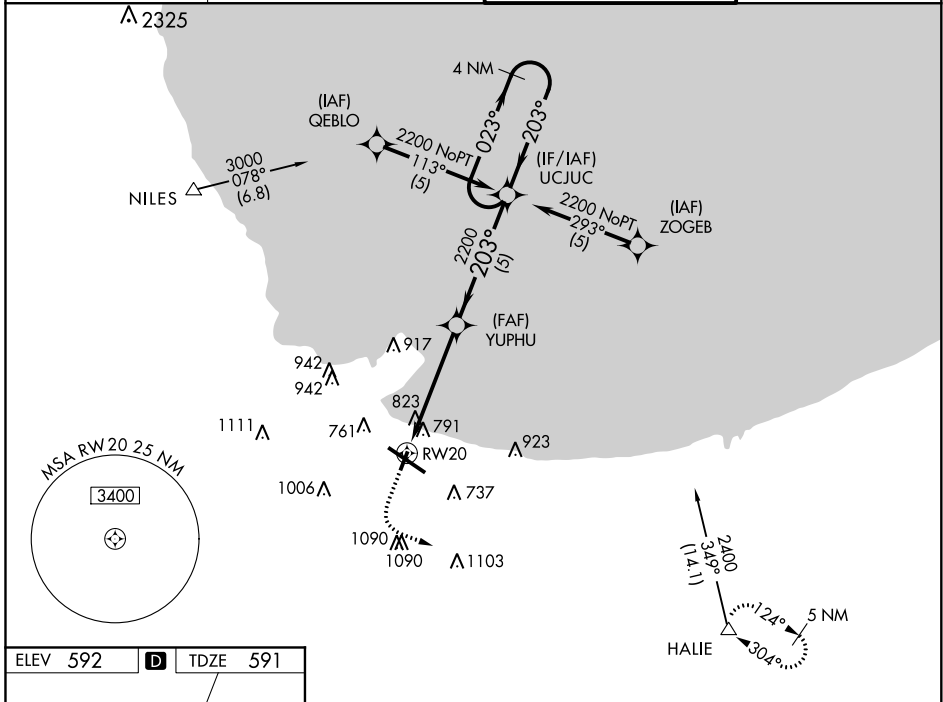
APP CRS <b>203°</b>	Rwy Idg <b>3604</b>
	TDZE <b>591</b>
	Apt Elev <b>592</b>

# RNAV (GPS) RWY 20

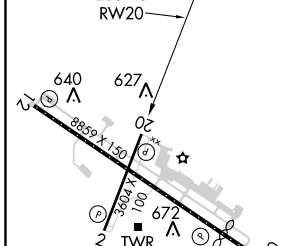
GARY/CHICAGO INTL (GYY)

<b>▽</b> NA	GPS or RNP-0.3 required. DME/DME RNP-0.3 NA.	MISSED APPROACH: Climb to 1500 then climbing left turn to 2400 direct HALIE WP and hold.
-------------	---	--

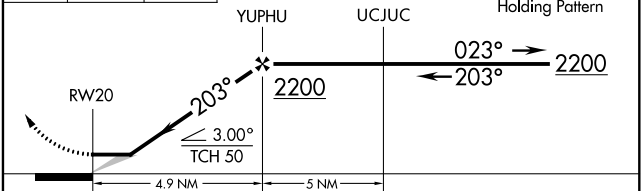
ATIS <b>134.575</b>	CHICAGO APP CON <b>133.1 285.6</b>	GARY TOWER ★ <b>125.6 (CTAF) 1</b>	GND CON <b>121.9</b>
------------------------	---------------------------------------	---------------------------------------	-------------------------



ELEV 592	<b>D</b>	TDZE 591
----------	----------	----------



1500	2400	HALIE	VGSI and descent angles not coincident (VGSI Angle 3.00/TCH 42).
------	------	-------	--



CATEGORY	A	B	C	D
GLS PA DA	NA			
LNAV/VNAV DA	NA			
LNAV MDA	1080-1 489 (500-1)	1080-1¼ 489 (500-1¼)	1080-1½ 489 (500-1½)	1080-1½ 489 (500-1½)
CIRCLING	1140-1 548 (600-1)	1180-1½ 588 (600-1½)	1180-1½ 588 (600-1½)	1180-2 588 (600-2)

REIL Rwy 2, 12 and 20 **1**

HIRL Rwy 12-30 **1**

MIRL Rwy 2-20 **1**

EC-2, 16 JUL 2020 to 13 AUG 2020

EC-2, 16 JUL 2020 to 13 AUG 2020