

LOC/DME I-GYY <b>108.75</b> Chan 24 (Y)	APP CRS <b>306°</b>	Rwy Idg <b>7959</b> TDZE <b>591</b> Apt Elev <b>597</b>
---	------------------------	---

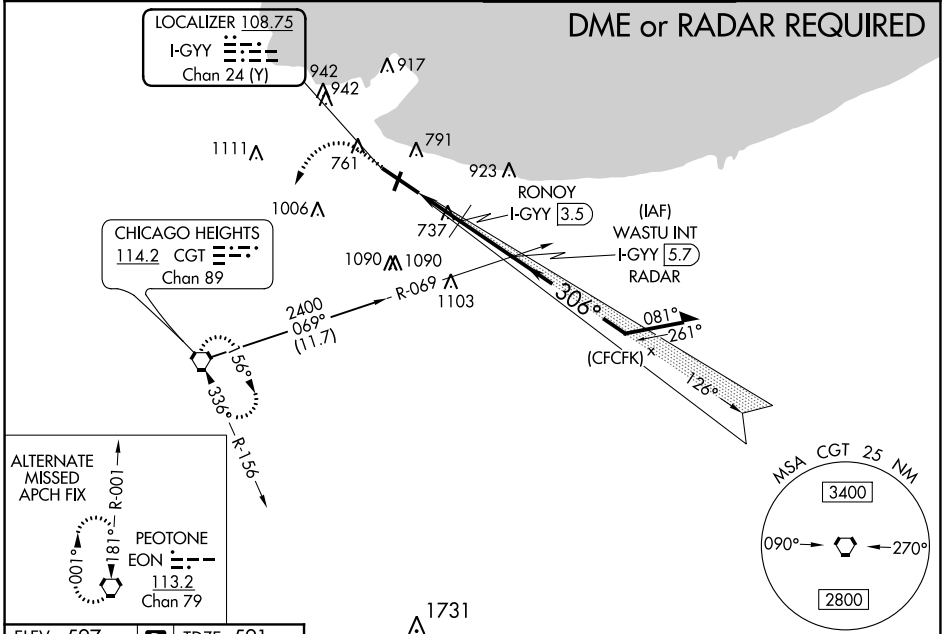
# ILS or LOC RWY 30

GARY/CHICAGO INTL (GYY)

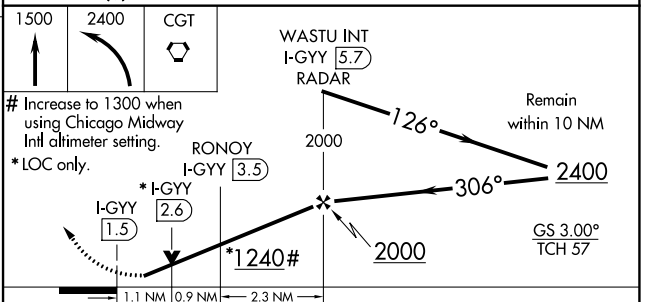
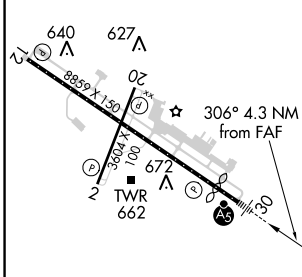
**⚠** When local altimeter setting not received, use Chicago Midway Intl altimeter setting and increase all DA 46 feet and all MDA 60 feet, increase S-LOC 30 Cat C/D visibility to 1½ miles, increase Circling Cat C/D and RONOY fix minimums Circling Cat C/D visibility ¼ mile. VDP NA with Chicago Midway Intl altimeter setting. \*\*RVR 1800 authorized with use of FD or AP or HUD to DA, NA when using Chicago Midway Intl.

**MALS** MISSED APPROACH: Climb to 1500 then climbing left turn to 2400 direct CGT VORTAC and hold.

ATIS <b>134.575</b>	CHICAGO APP CON <b>133.1 285.6</b>	GARY TOWER * <b>125.6 (CTAF) 0</b>	GND CON <b>121.9</b>
------------------------	---------------------------------------	---------------------------------------	-------------------------



ELEV 597	<b>D</b>	TDZE 591
----------	----------	----------



CATEGORY	A	B	C	D
S-ILS 30**	791/24 200 (200-½)			
S-LOC 30	1240/24	649 (700-½)	1240-1⅓	649 (700-1⅓)
<b>C</b> CIRCLING	1240-1	643 (700-1)	1400-2¼	1420-2¾
			803 (900-2¼)	823 (900-2¾)
RONOY FIX MINIMUMS				
S-LOC 30	1000/24	409 (500-½)	1000/40	409 (500-¾)
<b>C</b> CIRCLING	1140-1	1180-1	1400-2¼	1420-2¾
	543 (600-1)	583 (600-1)	803 (900-2¼)	823 (900-2¾)

REIL Rws 2, 12 and 20 **Ⓛ**  
HIRL Rwy 12-30 **Ⓛ**  
MIRL Rwy 2-20 **Ⓛ**

FAF to MAP 4.3 NM

Knots	60	90	120	150	180
Min:Sec	4:18	2:52	2:09	1:43	1:26

EC-2, 16 JUL 2020 to 13 AUG 2020

EC-2, 16 JUL 2020 to 13 AUG 2020