

VOR/DME PWA 113.4 Chan 81	APP CRS 176°	Rwy Idg TDZE Apt Elev	6844 1291 1300
---	------------------------	-----------------------------	---

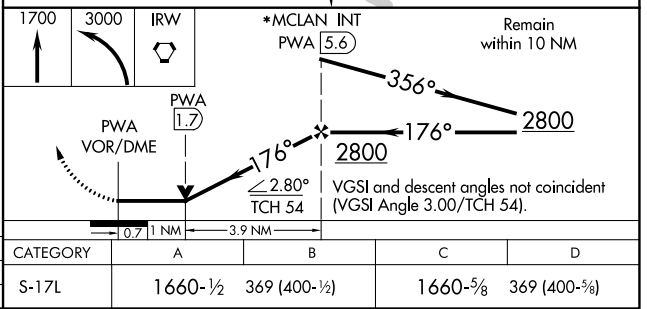
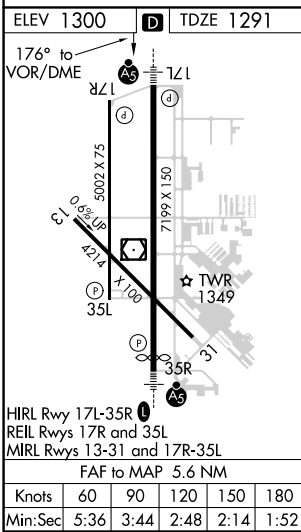
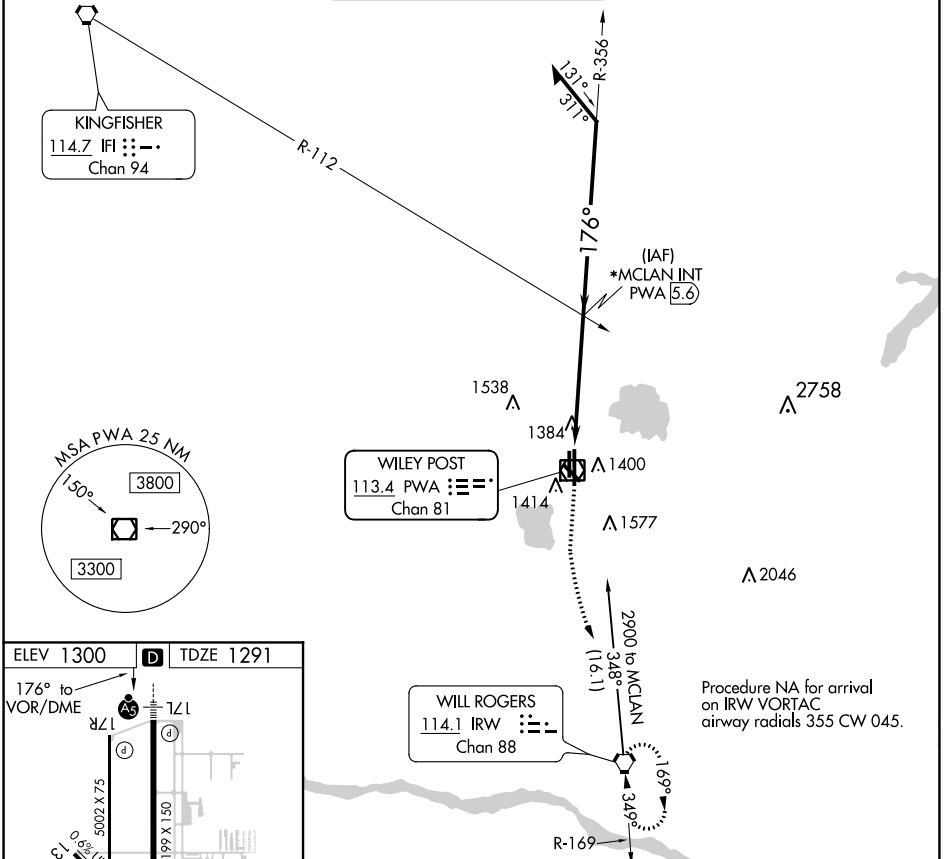
VOR RWY 17L

WILEY POST (PWA)

VDP NA when using Will Rogers World altimeter setting. For inop ALS, increase S-17L Cat C/D visibility to 1 SM. For inop ALS, when using Will Rogers World altimeter setting, increase Cat C/D visibility to 1½ SM. When local altimeter setting not received, use ASR Will Rogers World altimeter setting and increase all MDA 40 feet and increase Cat C/D visibility ½ SM. *RADAR fix in lieu of MCLAN INT will be provided on pilot request.

MALSR
MISSED APPROACH: Climb to 1700 then climbing left turn to 3000 direct IRW VORTAC and hold.

ATIS 128.725	OKC CITY APP CON 124.6 266.8	WILEY POST TOWER* 126.9(CTAF) 306.9	GND CON 121.7	UNICOM 122.95
------------------------	--	---	-------------------------	-------------------------



SC-1, 16 JUL 2020 to 13 AUG 2020

SC-1, 16 JUL 2020 to 13 AUG 2020