

| | | |
|--|------------------------|---|
| WAAS CH 42716 W35A | APP CRS 355° | Rwy Idg 6844 TDZE 1299 Apt Elev 1300 |
|--|------------------------|---|

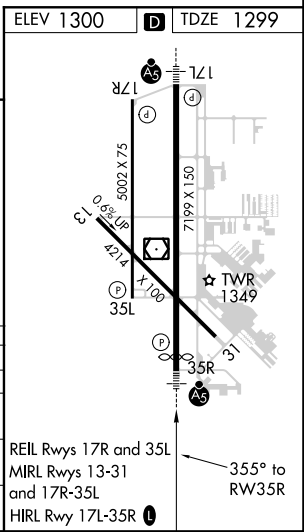
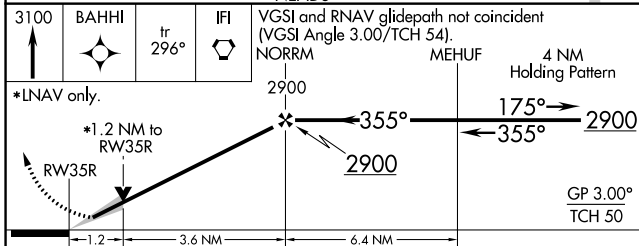
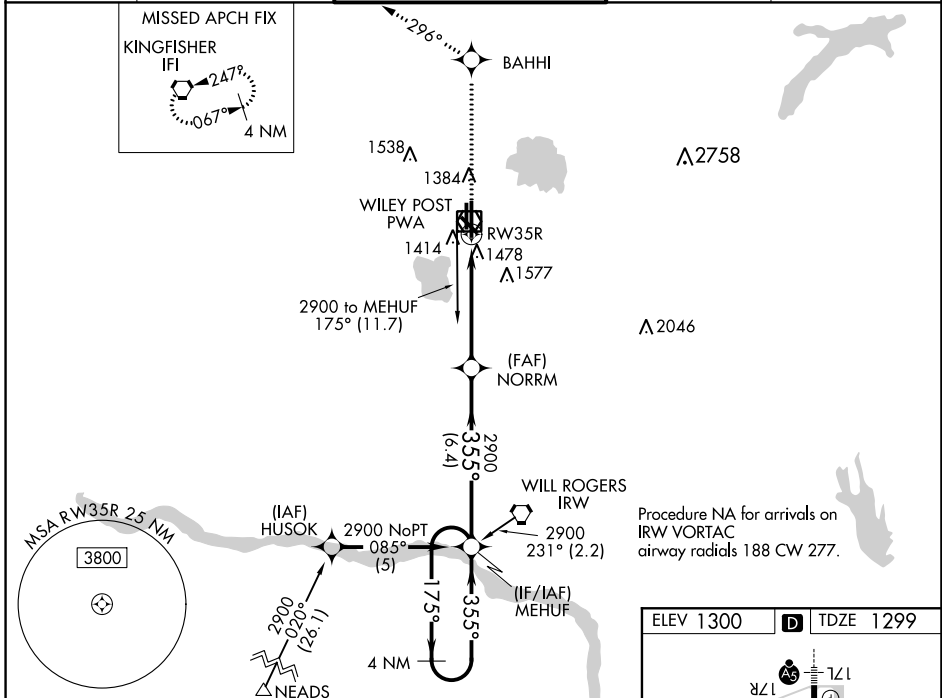
RNAV (GPS) RWY 35R

WILEY POST (PWA)

Baro-VNAV NA when using Will Rogers World altimeter setting. For uncompensated Baro-VNAV systems, LNAV/VNAV NA below -17°C (29°F) or above 46°C (114°F).
DME/DME RNP-0.3 NA. When local altimeter setting not received, use Will Rogers World altimeter setting and increase all DA 21 feet and all MDA 40 feet. VDP NA with Will Rogers World altimeter setting.

MALSR
 MISSED APPROACH: Climb to 3100 direct BAHHI and on track 296° to IFI VORTAC and hold.

| | | | | |
|------------------------|--|---|-------------------------|-------------------------|
| ATIS 128.725 | OKE CITY APP CON 124.6 266.8 | WILEY POST TOWER ★ 126.9(CTAF) 306.9 | GND CON 121.7 | UNICOM 122.95 |
|------------------------|--|---|-------------------------|-------------------------|



| CATEGORY | A | B | C | D |
|-------------------|------------------------|----------|--------------------------|--------------------|
| LPV DA | | 1499-1/2 | 200 (200-1/2) | |
| LNAV/VNAV DA | | 1769-1/4 | 470 (500-1/4) | |
| LNAV MDA | 1740-1/2 441 (500-1/2) | | 1740-3/4 441 (500-3/4) | 1740-1 441 (500-1) |
| C CIRCLING | 1780-1 480 (500-1) | | 1880-1 1/2 580 (600-1/2) | 1880-2 580 (600-2) |

SC-1, 16 JUL 2020 to 13 AUG 2020

SC-1, 16 JUL 2020 to 13 AUG 2020