

| | | |
|---------------------------------|------------------------|---|
| WAAS CH 72737 W17A | APP CRS 175° | Rwy ldg 6844 TDZE 1291 Apt Elev 1300 |
|---------------------------------|------------------------|---|

RNAV (GPS) RWY 17L

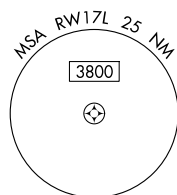
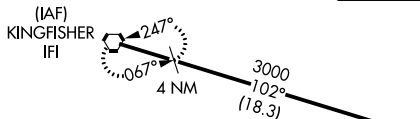
WILEY POST (PWA)

Baro-VNAV NA when using Will Rogers World altimeter setting. For uncompensated Baro-VNAV systems, LNAV/VNAV NA below -13°C (9°F) or above 54°C (130°F). When local altimeter setting not received, use Will Rogers World altimeter setting: Increase all DA 21 feet and all MDA 40 feet. Increase LNAV/VNAV all Cats visibility 1/8 mile and LNAV Cat C/D and Circling Cat C visibility 1/2 mile. DME/DME RNP-0.3 NA. VDP NA when using Will Rogers World altimeter setting.

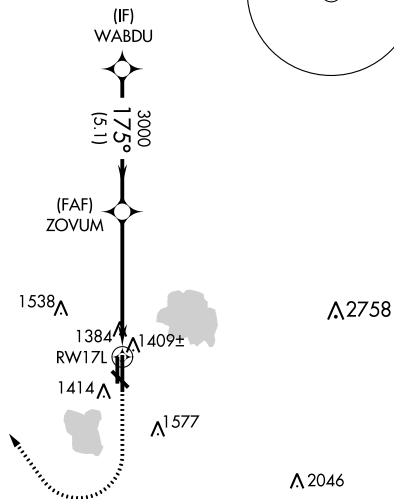


MISSED APPROACH:
Climb to 1700 then climbing right turn to 3400 direct IFI VORTAC and hold.

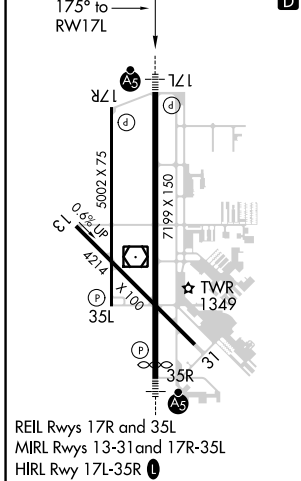
| | | | | |
|------------------------|--|---|-------------------------|-------------------------|
| ATIS 128.725 | OKE CITY APP CON 124.6 266.8 | WILEY POST TOWER ★ 126.9 (CTAF) 306.9 | GND CON 121.7 | UNICOM 122.95 |
|------------------------|--|---|-------------------------|-------------------------|



Procedure NA for arrivals at IFI VORTAC on V140 southwest bound.



| | |
|-----------|-----------|
| ELEV 1300 | TDZE 1291 |
|-----------|-----------|



REIL Rwy 17R and 35L
MIRL Rwy 13-31 and 17R-35L
HIRL Rwy 17L-35R

| | | | | |
|--|------------------------|--------|---|------|
| VGSi and RNAV glidepath not coincident (VGSi Angle 3.00/TCH 47). | | 1700 | 3400 | IFI |
| WABDU | ZOVUM | 3000 | 3000 | |
| 3000 | 175° | 3000 | | |
| GP 3.00° | TCH 54 | | | |
| 5.1 NM | | 4.2 NM | | 1 NM |
| CATEGORY | A | B | C | D |
| LPV DA | 1491-1/2 | | 200 (200-1/2) | |
| LNAV/VNAV DA | 1590-1/2 | | 299 (300-1/2) | |
| LNAV MDA | 1660-1/2 369 (400-1/2) | | 1660-5/8 369 (400-5/8) | |
| CIRCLING | 1780-1 480 (500-1) | | 1880-1/2 580 (600-1/2) 1880-2 580 (600-2) | |

SC-1, 16 JUL 2020 to 13 AUG 2020

SC-1, 16 JUL 2020 to 13 AUG 2020