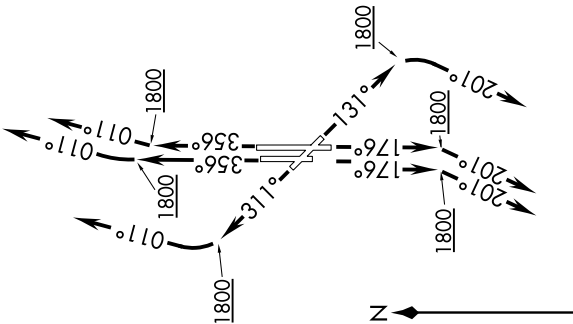


# FUNNL THREE DEPARTURE (RNAV)

SC-1, 16 JUL 2020 to 13 AUG 2020

**TOP ALTITUDE:**  
Assigned by ATC



**TAKEOFF MINIMUMS:**

Rwys 13, 17L/R, 31, 35L/R:

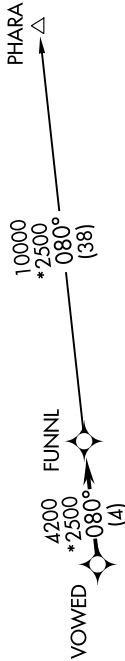
Standard with minimum climb of 500' per NM to 2100.

ATIS  
128.725  
GND CON  
121.7

WILEY POST TOWER \*  
126.9 306.9

OKC CITY DEP CON  
124.6 266.8 (South)

124.2 336.4 (North)



**▼ DEPARTURE ROUTE DESCRIPTION**

**TAKEOFF RWY 13:** Climb heading 131° to 1800, then right turn heading 201° or as assigned by ATC, expect RADAR vectors to VOWED. Thence. . . .

**TAKEOFF RWYS 17L/R:** Climb heading 176° to 1800, then right turn heading 201° or as assigned by ATC, expect RADAR vectors to VOWED. Thence. . . .

**TAKEOFF RWY 31:** Climb heading 311° to 1800, then right turn heading 011° or as assigned by ATC, expect RADAR vectors to VOWED. Thence. . . .

**TAKEOFF RWY 35L:** Climb heading 356° to 1800, then heading 011° or as assigned by ATC, expect RADAR vectors to VOWED. Thence. . . .

**TAKEOFF RWY 35R:** Climb heading 356° to 1800, then right turn heading 011° or as assigned by ATC, expect RADAR vectors to VOWED. Thence. . . .

. . . . on track 080° to FUNNL, then on (transition). Maintain 3000 or as assigned by ATC. Expect filed altitude 10 minutes after departure.

**PHARA TRANSITION (FUNNL3.PHARA):**

NOTE: RADAR required.  
NOTE: DME/DME/IRU or GPS required.  
NOTE: RNAV 1.

NOTE: Chart not to scale.

# FUNNL THREE DEPARTURE (RNAV)

SC-1, 16 JUL 2020 to 13 AUG 2020