

TACAN RWY 25

TACAN LRF Chan 29	APCH CRS 257°	Rwy Idg 12,000 TDZE 300 Arprt Elev 312
--------------------------	----------------------	---

AL-738 [USAF]

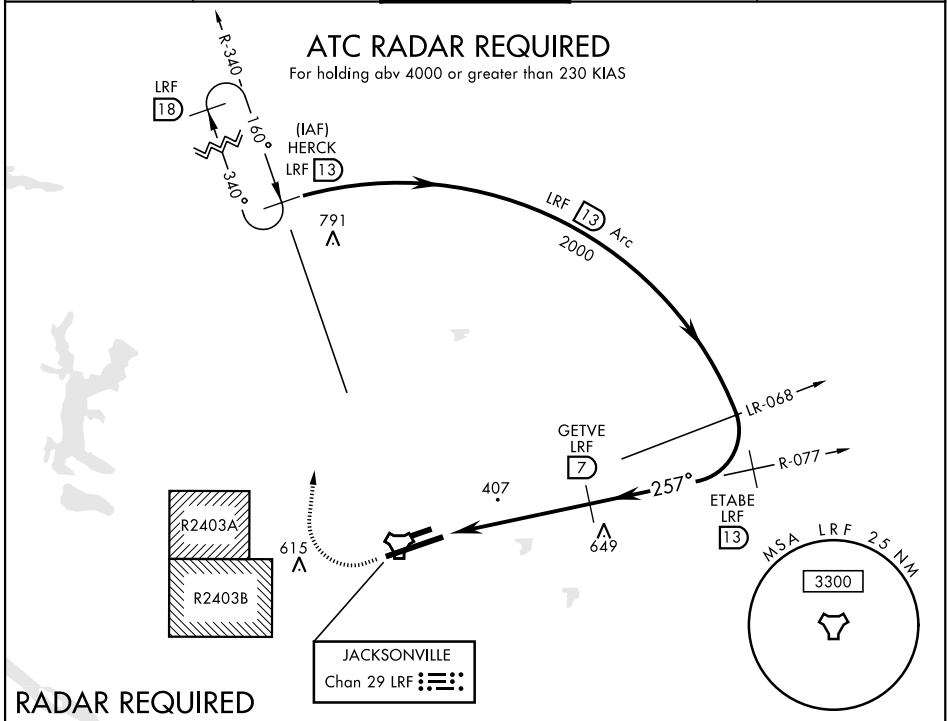
LITTLE ROCK AFB (KLRF)

▼ * When ALS inop, increase CAT AB RVR to 55 and vis to 1 mile; CAT CDE vis to 1 3/8 miles.
 ** Circling not authorized south of airfield.



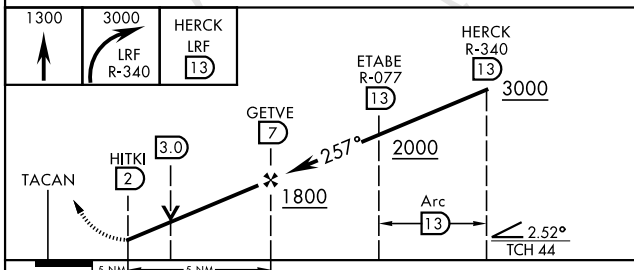
MISSED APPROACH: Climb to 1300 then turn right climbing to 3000, intercept LRF TACAN R-340 to 13 DME (HERCK) and hold.

ATIS ★ 119.175 251.1	LITTLE ROCK APP CON 119.5 306.2	LITTLE ROCK TOWER 120.6 269.075	GND CON 132.8 275.8	CLNC DEL 253.5
--------------------------------	---	---	-------------------------------	--------------------------

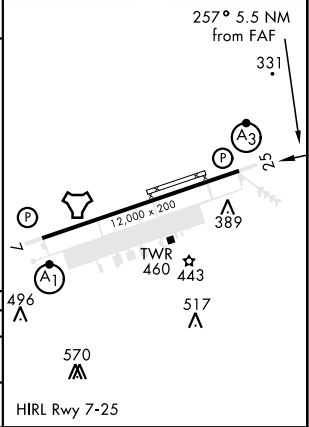


RADAR REQUIRED WHEN R-2403A / R2403B ACTIVE

EMERG SAFE ALT 100 NM 4100



ELEV 312	TDZE 300
----------	----------



CATEGORY	A	B	C	D	E
S-25 *	740/24	442 (500-1/2)	740/45	442	(500-7/8)
** CIRCLING	780-1 470 (500-1)	860-1 550 (600-1)	880-1 1/2 570(600-1 1/2)	1040-2 1/4 730(800-2 1/4)	1040-2 1/2 730 (800-2 1/2)

TACAN RWY 25

SC-1, 16 JUL 2020 to 13 AUG 2020

SC-1, 16 JUL 2020 to 13 AUG 2020