

ILS or LOC RWY 25

LOC I-TYV 109.9	APCH CRS 250°	Rwy Ldg 12,000 TDZE 300 Arprt Elev 312
---------------------------	-------------------------	---

AL-738 [USAF]

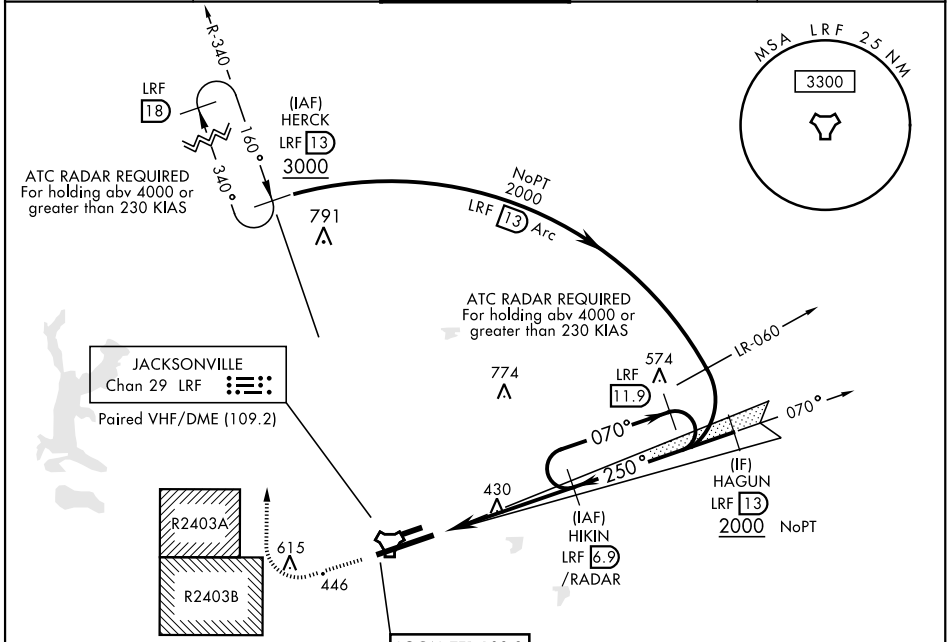
LITTLE ROCK AFB (KLRF)

▼ ** When ALS inop, increase RVR to 40 and vis to ¼ mile.
 *** When ALS inop, increase CAT AB RVR to 55, vis to 1 mile;
 CAT CDE vis to 1 ½ miles.
 *** Circling not authorized south of airfield.



MISSED APPROACH: Climb to 1300 then turn right climbing to 3000, intercept LRF TACAN R-340 to 13 DME (HERCK) and hold.

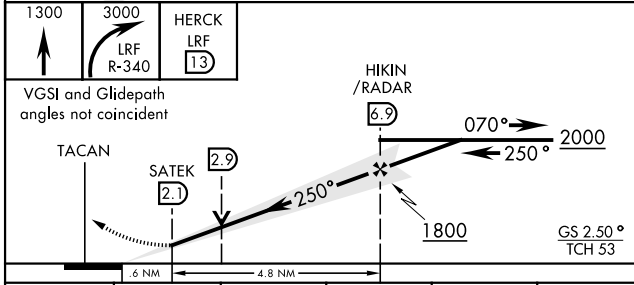
ATIS ★ 119.175 251.1	LITTLE ROCK APP CON 119.5 306.2	LITTLE ROCK TOWER 120.6 269.075	GND CON 132.8 275.8	CLNC DEL 253.5
--------------------------------	---	---	-------------------------------	--------------------------



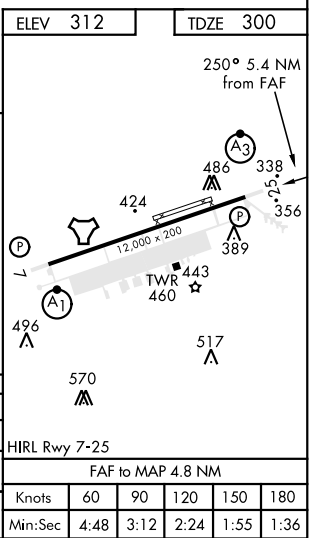
RADAR or DME REQUIRED

(RADAR required when R-2403A/R-2403B active)

EMERG SAFE ALT 100 NM 4100



1300	3000	HERCK LRF 13			
VGSi and Glidepath angles not coincident					
TACAN	SATEK 2.9	HIKIN /RADAR 6.9			
.6 NM		4.8 NM			
GS 250°		TCH 53			
CATEGORY	A	B	C	D	E
S-ILS 25 *	498/24		200	[200-½]	
S-LOC 25 **	720/24	422 (500-½)	720/40 422 (500-¾)		
CIRCLING ***	780-1 470 (500-1)	860-1 550 (600-1)	880-1½ 570 (600-1½)	1040-2¼ 730 (800-2¼)	1040-2½ 730 (800-2½)



ILS or LOC RWY 25

SC-1, 16 JUL 2020 to 13 AUG 2020

SC-1, 16 JUL 2020 to 13 AUG 2020