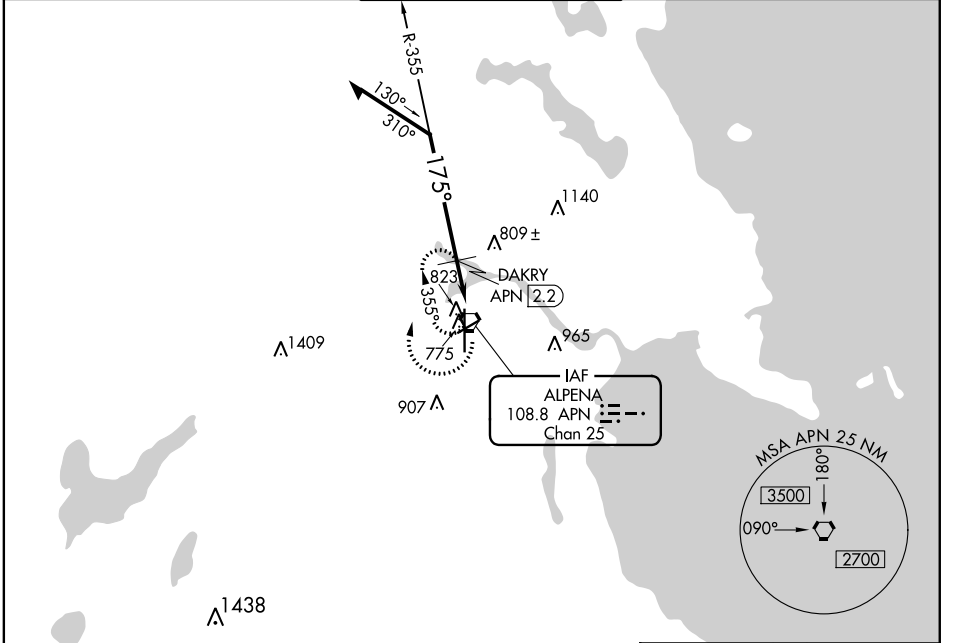


VORTAC APN <b>108.8</b> Chan 25	APP CRS <b>175°</b>	Rwy Idg TDZE Apt Elev	<b>9001</b> <b>683</b> <b>690</b>
---------------------------------------	------------------------	-----------------------------	---

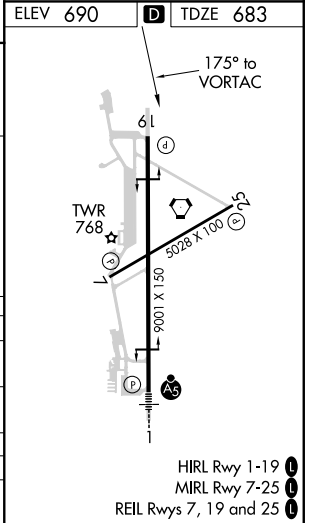
**VOR RWY 19**  
ALPENA COUNTY RGNL (APN)

-32°C	Rwy 19 helicopter visibility reduction below 3/4 SM NA.	MISSED APPROACH: Climbing right turn to 2500 in APN VORTAC holding pattern.
-------	---	---

ASOS <b>120.675</b>	ALPENA APP CON ★ <b>128.425 379.3</b>	ALPENA TOWER ★ <b>121.35 (CTAF) 0 318.1</b>	GND CON <b>121.9 275.8</b>	UNICOM <b>122.95</b>
------------------------	--	--	-------------------------------	-------------------------



Remain within 10 NM				
VGSi and descent angles not coincident (VGSi Angle 3.00/TCH 39). TCH 55 0.6 NM    1.2 NM				
CATEGORY	A	B	C	D
S-19	1340-1	657 (700-1)	1340-1 7/8	657 (700-1 7/8)
CIRCLING	1340-1	650 (700-1)	1340-1 7/8	1340-2
DAKRY FIX MINIMUMS				
S-19	1100-1	417 (500-1)	1100-1 1/8	417 (500-1 1/8)
CIRCLING	1140-1	450 (500-1)	1220-1 1/2	1280-2
			530 (600-1 1/2)	590 (600-2)



EC-1, 16 JUL 2020 to 13 AUG 2020

EC-1, 16 JUL 2020 to 13 AUG 2020