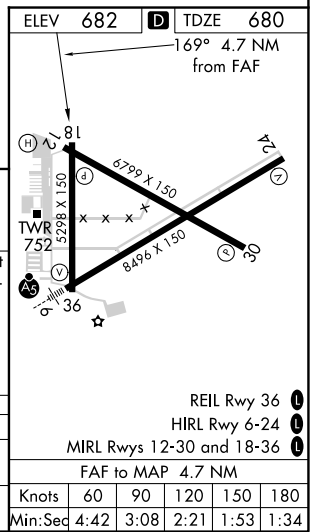
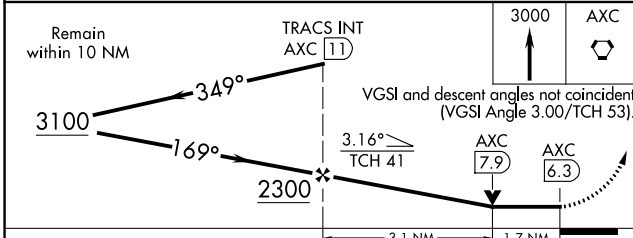
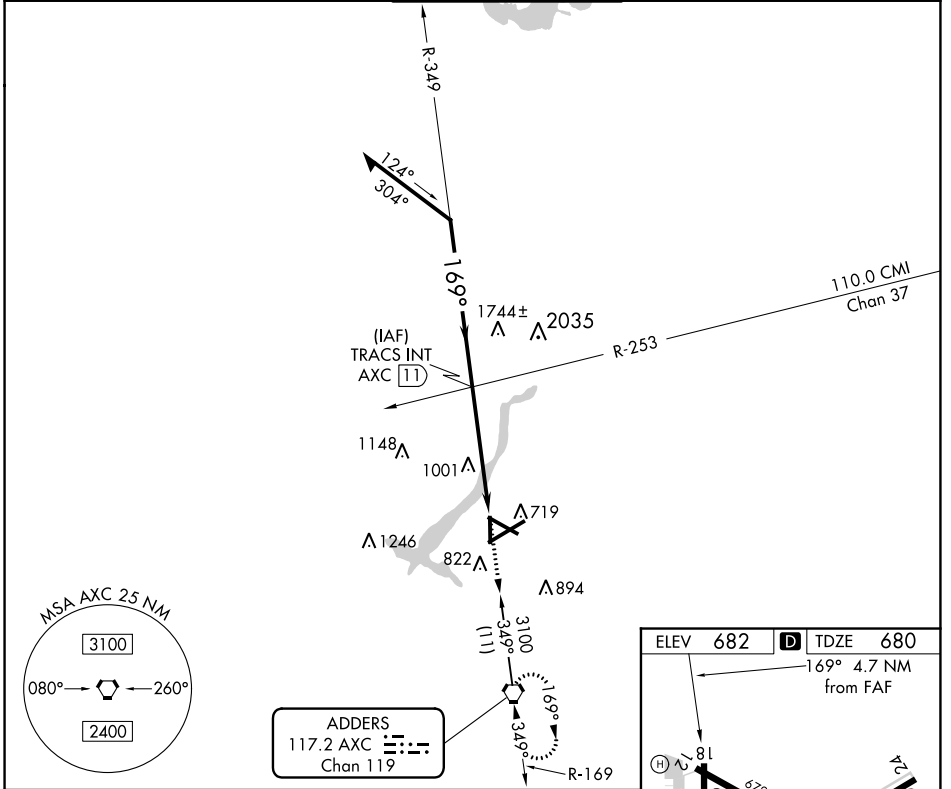


VORTAC AXC 117.2 Chan 119	APP CRS 169°	Rwy Idg 5298 TDZE 680 Apt Elev 682
---	------------------------	--

VOR RWY 18

DECATUR (DEC)

<p>▼ When local altimeter setting not received, use Logan County altimeter setting and increase all MDA 80 feet; increase S-18 Cat C/D and Circling Cat C/D visibility ¼ SM. Rwy 18 helicopter visibility reduction below ¼ SM NA.</p>		<p>MISSED APPROACH: Climb to 3000 direct AXC VORTAC and hold, continue climb-in-hold to 3000.</p>		
ATIS 126.35	CHAMPAIGN APP CON ★ 132.85 290.225	DECATUR TOWER ★ 118.9 (CTAF) 0 291.775	GND CON 121.75 291.775	UNICOM 122.95



CATEGORY	A	B	C	D
S-18	1260-1 580 (600-1)		1260-1½ 580 (600-1½)	1260-1¾ 580 (600-1¾)
CIRCLING	1260-1 578 (600-1)		1360-2 678 (700-2)	1360-2¼ 678 (700-2¼)

EC-3, 16 JUL 2020 to 13 AUG 2020

EC-3, 16 JUL 2020 to 13 AUG 2020