

WAAS CH 82038 W18A	APP CRS 180°	Rwy Idg TDZE 680 Apt Elev 682	5298
--	------------------------	---	-------------

RNAV (GPS) RWY 18

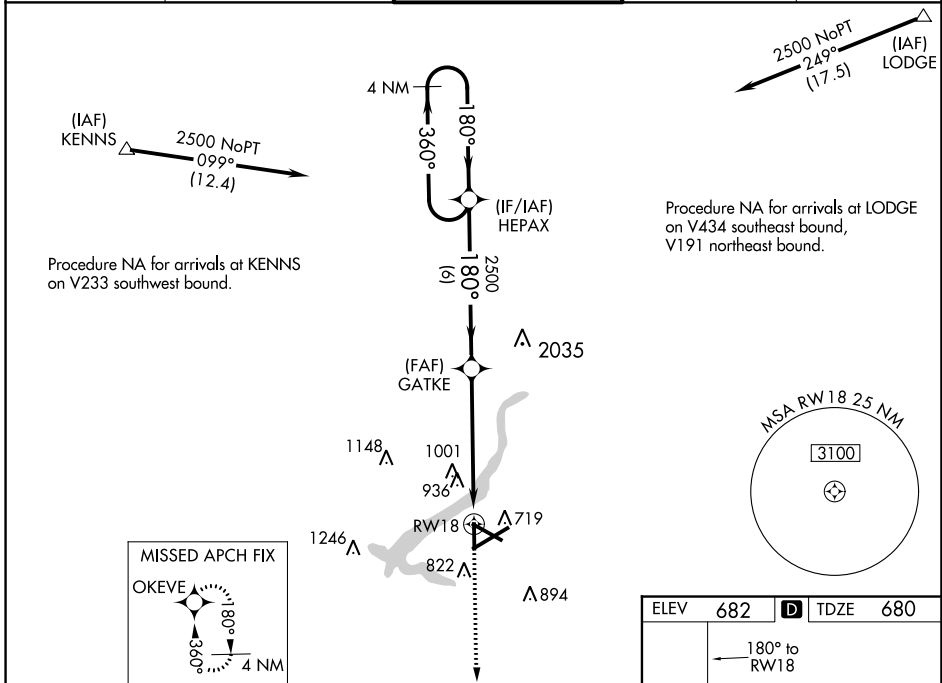
DECATUR (DEC)

RNP APCH

▼ For uncompensated Baro-VNAV systems, LNAV/VNAV NA below -19°C or above 54°C. Baro-VNAV and VDP NA when using Logan County altimeter setting. Rwy 18 helicopter visibility reduction below ¼ SM NA. When local altimeter setting not received, use Logan County altimeter setting: Increase LPV DA to 1032 feet and visibility all Cats ¼ mile, LNAV/VNAV DA to 1326 feet and visibility all Cats ⅓ mile; increase all MDA 80 feet and LNAV visibility Cats C/D ⅓ mile, Circling Cat C/D visibility ¼ mile.

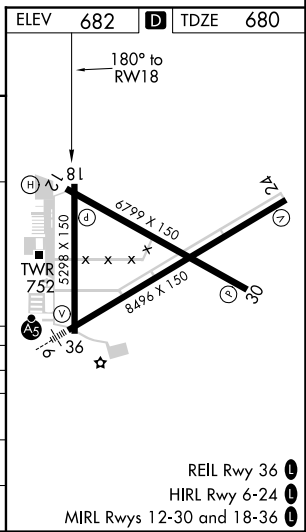
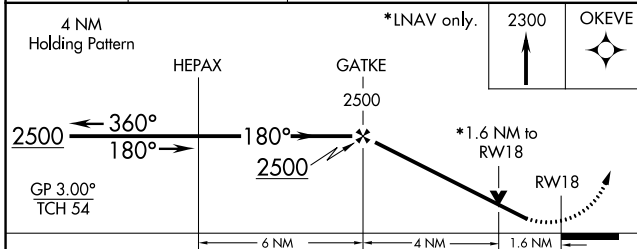
MISSED APPROACH:
Climb to 2300 direct OKEVE and hold.

ATIS 126.35	CHAMPAIGN APP CON * 132.85 290.225	DECATUR TOWER * 118.9 (CTAF) 291.775	GND CON 121.75 291.775	UNICOM 122.95
-----------------------	--	--	----------------------------------	-------------------------



EC-3, 16 JUL 2020 to 13 AUG 2020

EC-3, 16 JUL 2020 to 13 AUG 2020



CATEGORY	A	B	C	D
LPV DA		952-7/8	272 (300-7/8)	
LNAV/VNAV DA		1246-17/8	566 (600-17/8)	
LNAV MDA	1240-1	560 (600-1)	1240-15/8	560 (600-15/8)
CIRCLING	1240-1	558 (600-1)	1360-2	1360-2 1/4
			678 (700-2)	678 (700-2 1/4)