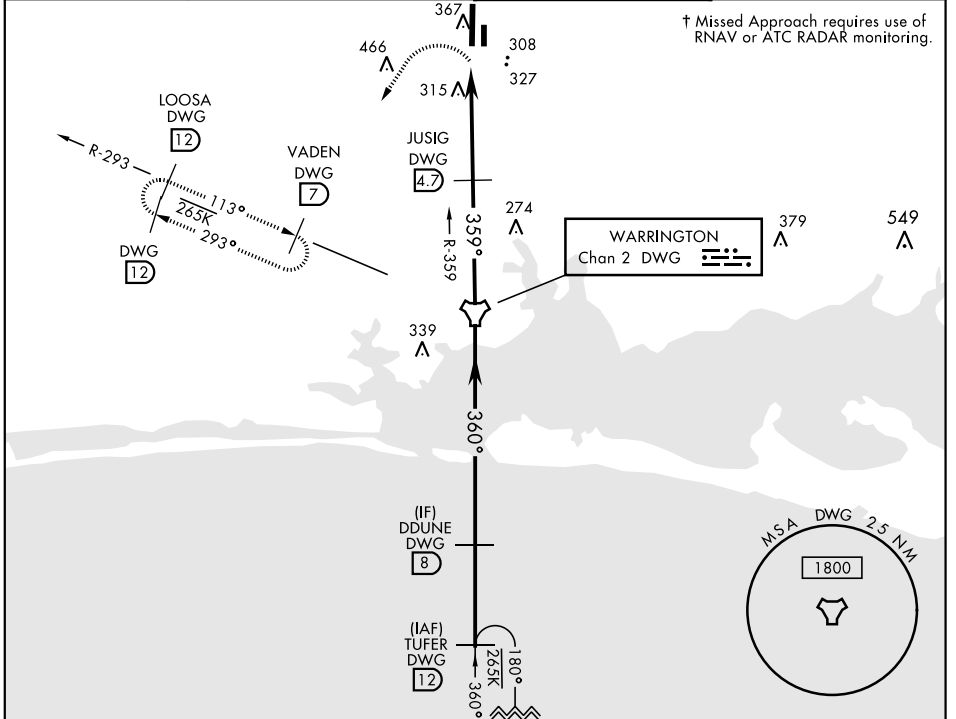


TACAN RWY 36

TACAN DWG Chan 2	APCH CRS 359°	Rwy Idg 8025 THRE 190 Arprt Elev 195	AL-699 [USAF]	DUKE FLD (EGLIN AF AUX NR3) (KEGI)
-------------------------	----------------------	---	---------------	------------------------------------

† MISSED APPROACH: Climbing left turn to 2000 direct DWG R-293/7 DME (VADEN) and hold.

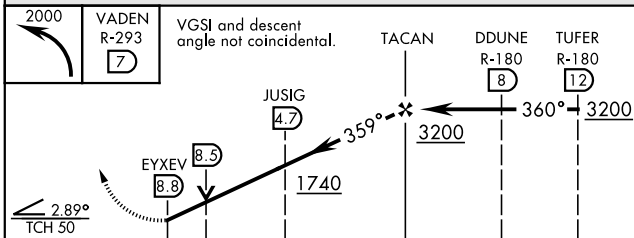
ATIS ★ 244.575	EGLIN APP CON 125.1 281.45 (271° - 089°) 132.1 360.6 (090° - 270°)	DUKE TOWER ★ 133.2 290.425	GND CON 123.25 251.125
--------------------------	--	--------------------------------------	----------------------------------



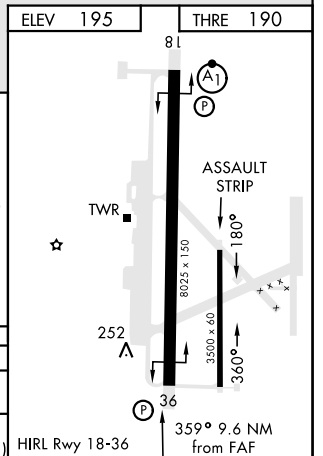
SE-3, 16 JUL 2020 to 13 AUG 2020

SE-3, 16 JUL 2020 to 13 AUG 2020

EMERG SAFE ALT 100 NM 3600



CATEGORY	A	B	C	D	E
S-36	620-1	430 (500-1)	620-1½	430 (500-1½)	
CIRCLING	700-1	505 (600-1)	700-1½ 505 (600-1½)	820-2 625 (700-2)	840-2½ 645 (700-2½)



TACAN RWY 36