

TACAN RWY 18

TACAN DWG Chan 2	APCH CRS 180°	Rwy Ldg THRE 8025 189 Arprt Elev 195	AL-699 [USAF]	DUKE FLD (EGLIN AF AUX NR3) (KEGI)
----------------------------	-------------------------	---	---------------	------------------------------------

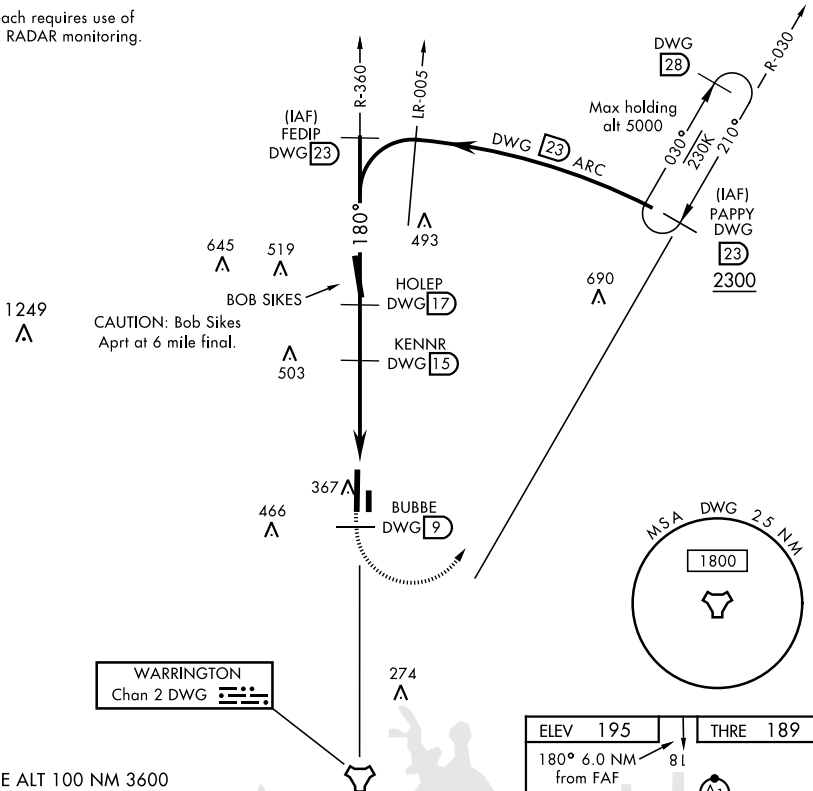
* When ALS inop, increase CAT AB RVR to 55, vis to 1 mile, CAT CDE vis to 1½ miles.

ALSF-1

MISSED APPROACH: Climb on DWG R-360 to 9 DME (BUBBE), then climbing left turn to 2300 direct DWG R-030/23 DME (PAPPY) and hold.

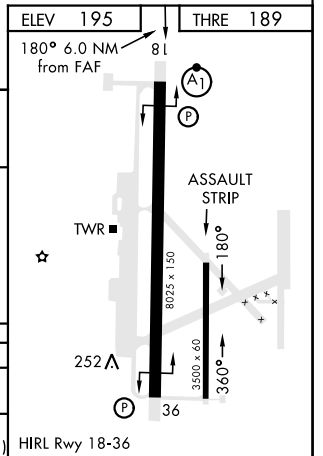
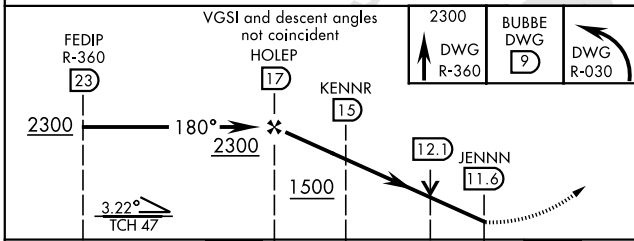
ATIS ★ 244.575	EGLIN APP CON 125.1 281.45 (271° - 089°) 132.1 360.6 (090° - 270°)	DUKE TOWER ★ 133.2 290.425	GND CON 123.25 251.125
--------------------------	--	--------------------------------------	----------------------------------

Missed Approach requires use of RNAV or ATC RADAR monitoring.



WARRINGTON
Chan 2 DWG

EMERG SAFE ALT 100 NM 3600



CATEGORY	A	B	C	D	E
S-18*	560/24 371 (400-½)		560/35 371 (400-¾)		
CIRCLING	700-1 505 (600-1)		700-1½ 505 (600-1½)	820-2 625 (700-2)	840-2¼ 645 (700-2¼)

TACAN RWY 18

SE-3, 16 JUL 2020 to 13 AUG 2020

SE-3, 16 JUL 2020 to 13 AUG 2020