

# HI TACAN Z RWY 18

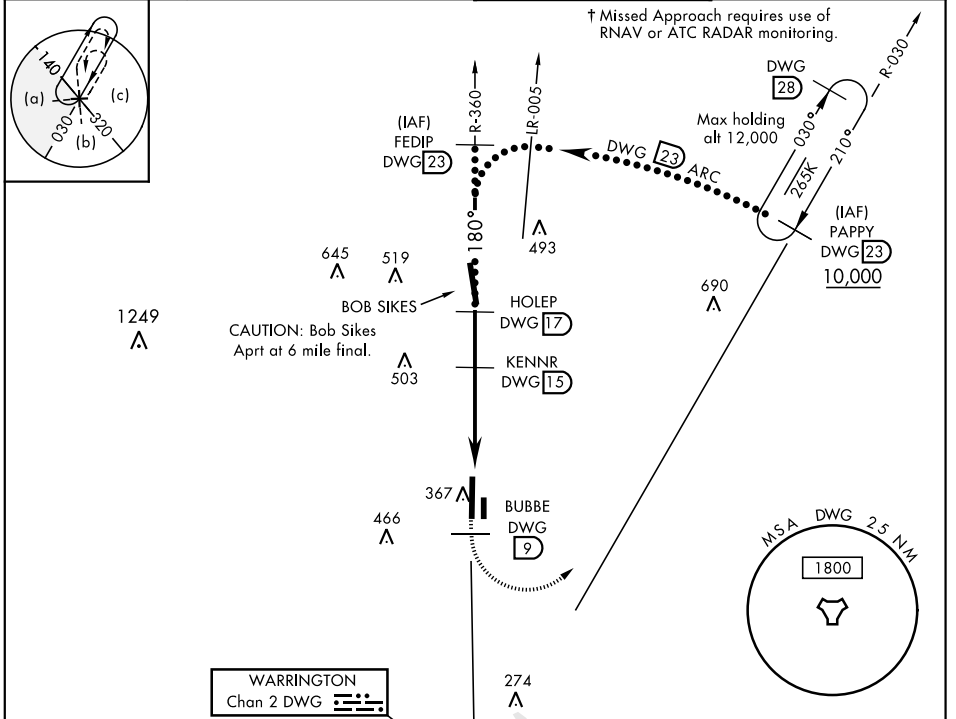
TACAN DWG Chan <b>2</b>	APCH CRS <b>180°</b>	Rwy ldg THRE Arprt Elev <b>8025</b> <b>189</b> <b>195</b>	JAL-699 [USAF]	DUKE FLD (EGLIN AF AUX NR3)	(KEGI)
----------------------------	-------------------------	--	----------------	-----------------------------	--------

\* When ALS inop, increase vis to 1½ miles.



† MISSED APPROACH: Climb on DWG R-360 to 9 DME (BUBBE), then climbing left turn to 2300 direct DWG R-030/23DME (PAPPY) and hold.

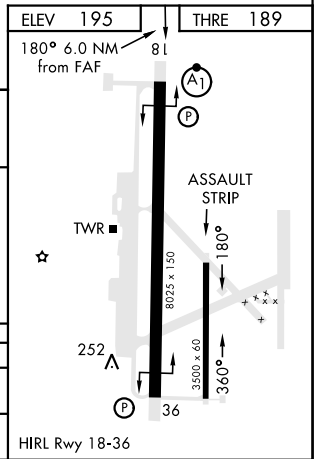
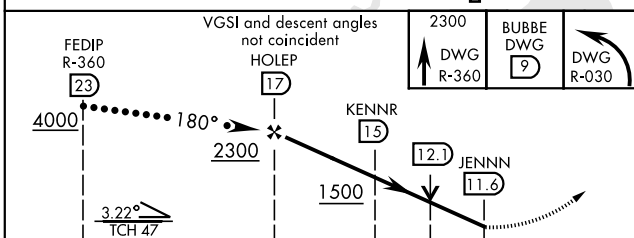
ATIS ★ <b>244.575</b>	EGLIN APP CON <b>125.1 281.45</b> (271° - 089°) <b>132.1 360.6</b> (090° - 270°)	DUKE TOWER ★ <b>133.2 290.425</b>	GND CON <b>123.25 251.125</b>
--------------------------	--	--------------------------------------	----------------------------------



SE-3, 16 JUL 2020 to 13 AUG 2020

SE-3, 16 JUL 2020 to 13 AUG 2020

EMERG SAFE ALT 100 NM 3600



CATEGORY	C	D	E
S-18*	560/35	371 (400-½)	
CIRCLING	700-1½ 505 (600-1½)	820-2 625 (700-2)	840-2¼ 645 (700-2¼)

# HI TACAN Z RWY 18