

# SUNOL ONE DEPARTURE

D-ATIS  
126.95  
CLNC DEL  
118.0  
CPDLC  
GND CON  
121.7  
SAN JOSE TOWER\*  
124.0 257.6  
NORCAL DEP CON  
121.3 270.35

SACRAMENTO  
115.2 SAC  
Chan 99  
N38°26.62'-W121°33.10'  
L-2-3, H-3

LINDEN  
114.8 LIN  
Chan 95  
N38°04.47'-W121°00.23'  
L-2-3, H-3

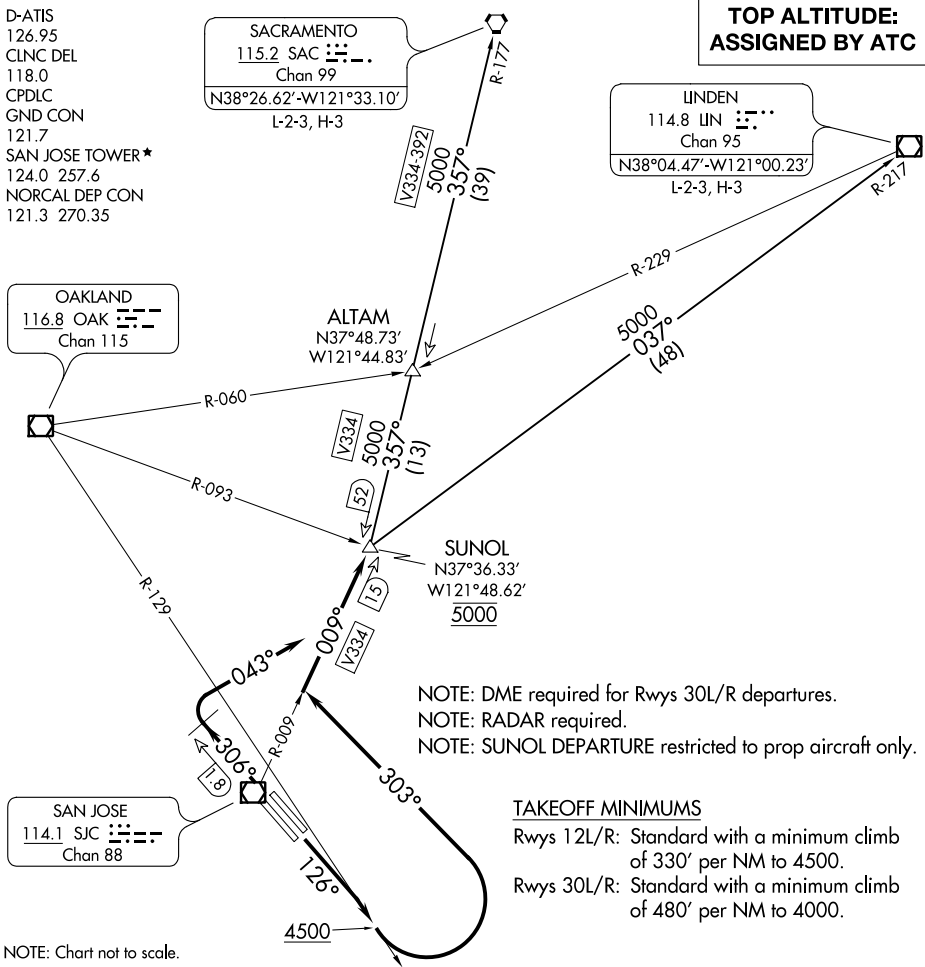
**TOP ALTITUDE:  
ASSIGNED BY ATC**

OAKLAND  
116.8 OAK  
Chan 115

ALTAM  
N37°48.73'  
W121°44.83'

SUNOL  
N37°36.33'  
W121°48.62'  
5000

SAN JOSE  
114.1 SJC  
Chan 88



NOTE: DME required for Rwy 30L/R departures.  
NOTE: RADAR required.  
NOTE: SUNOL DEPARTURE restricted to prop aircraft only.

### TAKEOFF MINIMUMS

Rwys 12L/R: Standard with a minimum climb of 330' per NM to 4500.  
Rwys 30L/R: Standard with a minimum climb of 480' per NM to 4000.

NOTE: Chart not to scale.

### DEPARTURE ROUTE DESCRIPTION

**TAKEOFF RUNWAYS 12L/R:** Climb heading 126° to intercept and proceed on OAK R-129 to 4500, then turn left heading 303° for RADAR vectors to intercept and proceed on SJC R-009 to cross SUNOL at 5000, thence . . . .

**TAKEOFF RUNWAYS 30L/R:** Climb heading 306° at SJC 1.8 DME northwest of SJC VOR/DME, turn right heading 043° to intercept and proceed on SJC R-009 to cross SUNOL at 5000, thence . . . .

. . . . then on (transition) or (assigned route). Maintain ATC assigned altitude.

**LINDEN TRANSITION (SUNOL1.LIN):** From over SUNOL on LIN R-217 to LIN VOR/DME.

**SACRAMENTO TRANSITION (SUNOL1.SAC):** From over SUNOL on SAC R-177 to SAC VORTAC.

SW-2, 16 JUL 2020 to 13 AUG 2020

SW-2, 16 JUL 2020 to 13 AUG 2020