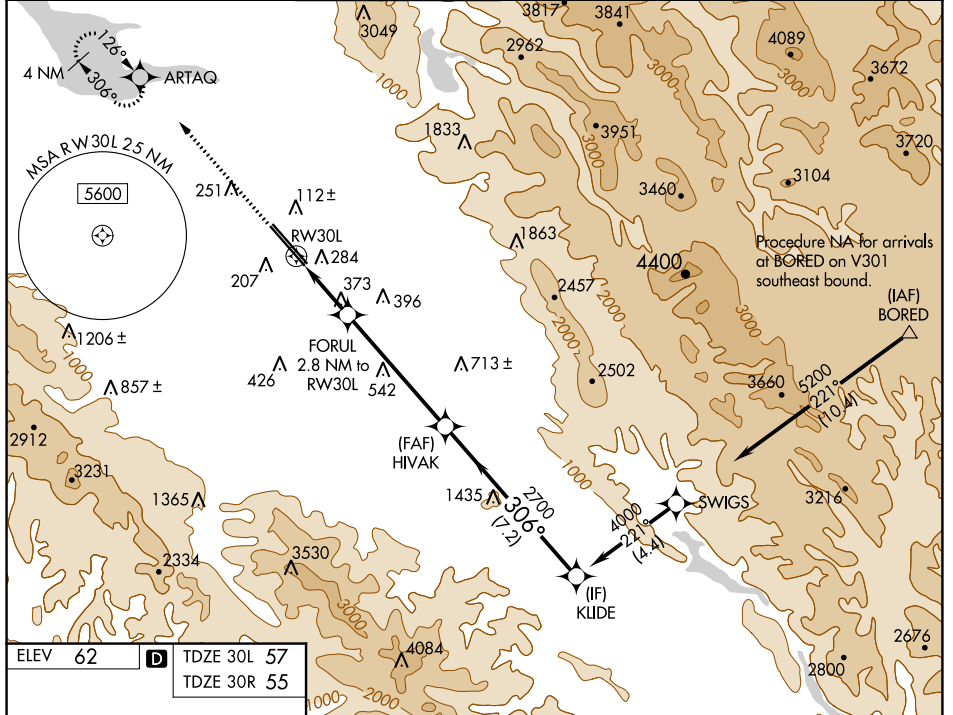


WAAS CH <b>97306</b> <b>W30A</b>	APP CRS <b>306°</b>	Rwy Idg 30L <b>7614</b> 30R <b>7597</b>	TDZE <b>57</b> <b>55</b>	Apt Elev <b>62</b> <b>62</b>
--	------------------------	---	--------------------------------	------------------------------------

# RNAV (GPS) Y RWY 30L

NORMAN Y MINETA SAN JOSE INTL (SJC)

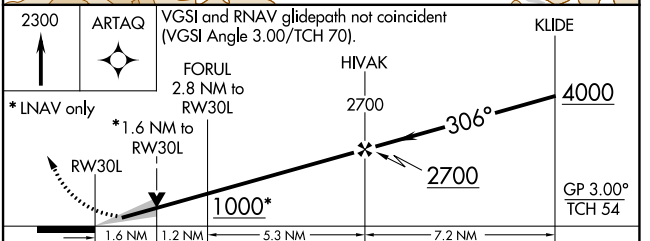
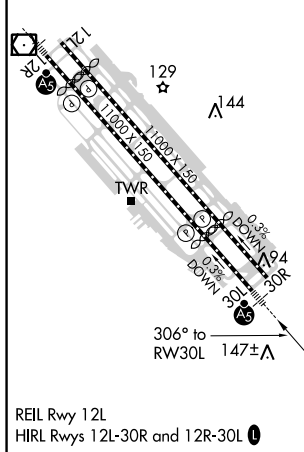
<p>For uncompensated Baro-VNAV systems, LNAV/VNAV NA below -1°C (31°F) or above 54°C (130°F). DME/DME RNP-0.3 NA. # RVR 1800 authorized with use of FD or AP or HUD to DA.</p>				<p>MALSR Rwy 30L </p>	<p>MISSED APPROACH: Climb to 2300 direct ARTAQ and hold.</p>		
D-ATIS <b>126.95</b>	NORCAL APP CON <b>120.1</b>	290.25	SAN JOSE TOWER * <b>124.0</b> (CTAF) <b>257.6</b>	GND CON <b>121.7</b>	CLNC DEL <b>118.0</b>	CPDLC	UNICOM <b>122.95</b>



SW-2, 16 JUL 2020 to 13 AUG 2020

SW-2, 16 JUL 2020 to 13 AUG 2020

ELEV 62	<b>D</b>	TDZE 30L 57
		TDZE 30R 55



ARTAQ	HIVAK			KLIDE
FORUL 2.8 NM to RW30L	2700	2700	4000	GP 3.00° TCH 54
1000*				
1.6 NM	1.2 NM	5.3 NM	7.2 NM	
CATEGORY	A	B	C	D
LPV DA #	257/24 200 (200-½)			
LNAV/VNAV DA	540/60 483 (500-1¼)			
LNAV MDA	640/24	583 (600-½)	640-1¼	583 (600-1¼)
SIDESTEP 30R	640-1 585 (600-1)			