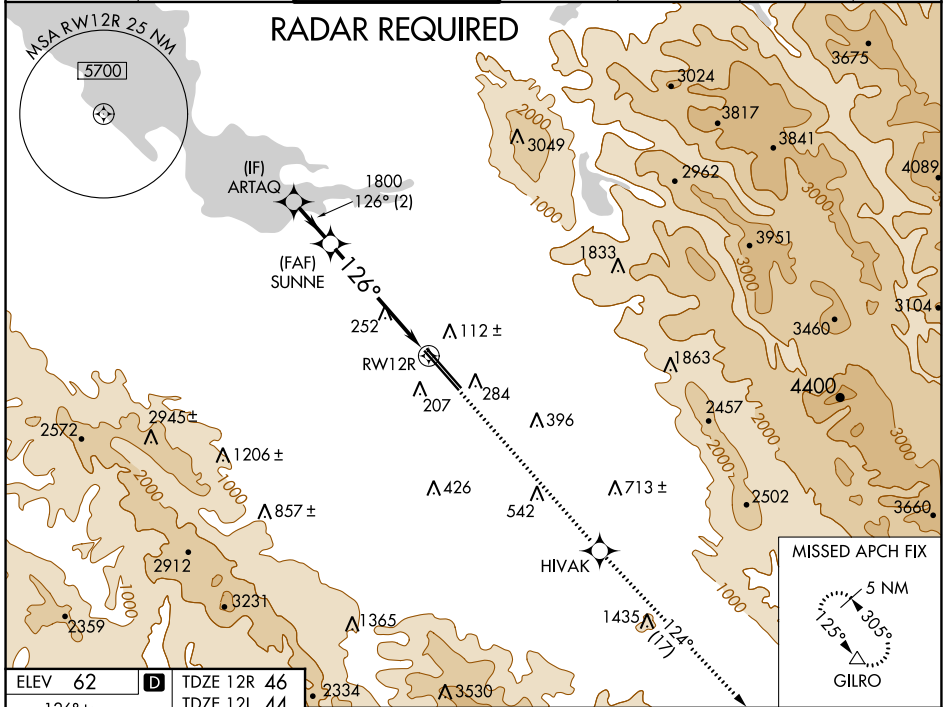


WAAS CH <b>90106</b> <b>W12A</b>	APP CRS <b>126°</b>	Rwy Idg TDZE Apt Elev	12R <b>8587</b> <b>46</b> <b>62</b>	12L <b>8833</b> <b>44</b> <b>62</b>
--	------------------------	-----------------------------	--	--

# RNAV (GPS) Y RWY 12R

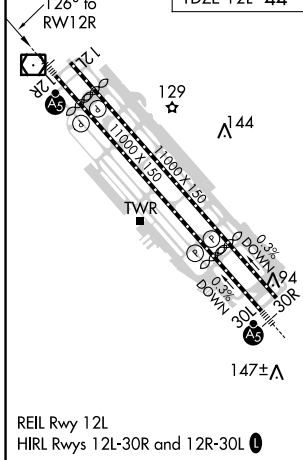
NORMAN Y MINETA SAN JOSE INTL (SJC)

<p><b>▽</b> For uncompensated Baro-VNAV systems, LNAV/VNAV NA below -1°C (31°F) or above 54°C (130°F). DME/DME RNP-0.3 NA. For inoperative MALS, increase LNAV/VNAV all Cats visibility to 1 mile and LNAV Cats C/D visibility to 1½ mile.</p>			<p>MALS Rwy 12R</p>	<p>MISSED APPROACH: Climb to 4600 direct HIWAK and on track 124° to GILRO and hold.</p>		
D-ATIS <b>126.95</b>	NORCAL APP CON <b>120.1 290.25</b>	SAN JOSE TOWER ★ <b>124.0</b> (CTAF) <b>257.6</b>	GND CON <b>121.7</b>	CLNC DEL <b>118.0</b>	CPDLC	UNICOM <b>122.95</b>



SW-2, 16 JUL 2020 to 13 AUG 2020

SW-2, 16 JUL 2020 to 13 AUG 2020



VGSI and RNAV glidepath not coincident (VGSI Angle 3.00/TCH 75).

GP 3.00° TCH 58	ARTAQ	SUNNE	4600	HIWAK	tr 124°	GILRO
	1800	1800				
	2 NM	4.1 NM	1.3 NM			
CATEGORY	A	B	C	D		
LPV DA	246-½		200 (200-½)			
LNAV/VNAV DA	371-5/8 325 (400-3/8)		371-1 325 (400-1)			
LNAV MDA	520-½ 474 (500-½)		520-1 474 (500-1)			
SIDESTEP 12L	520-1 476 (500-1)		520-1½ 476 (500-1½)		520-2 476 (500-2)	

\*LNAV only

\*1.3 NM to RW12R