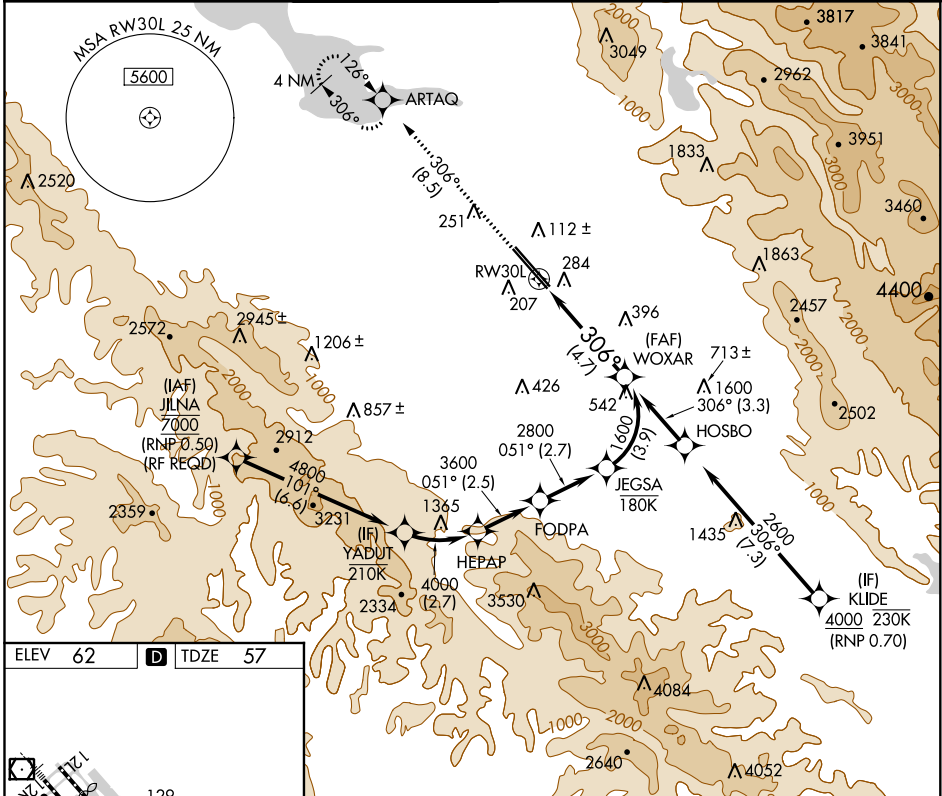


APP CRS	Rwy Idg	<b>7614</b>
<b>306°</b>	TDZE	<b>57</b>
	Apt Elev	<b>62</b>

# RNAV (RNP) Z RWY 30L

NORMAN Y MINETA SAN JOSE INTL (SJC)

For uncompensated Baro-VNAV systems, procedure NA below -1°C (31°F) or above 54°C (130°F). GPS required. For inoperative MALSR, increase RNP 0.15 all Cats visibility to RVR 6000 and increase RNP 0.30 all Cats visibility to 1 1/2 mile.				MALSR 		MISSED APPROACH: Climb to 2300 on track 306° to ARTAQ and hold.	
D-ATIS	NORCAL APP CON	SAN JOSE TOWER *	GND CON	CLNC DEL	CPDLC	UNICOM	
<b>126.95</b>	<b>120.1 290.25</b>	<b>124.0 (CTAF) 0 257.6</b>	<b>121.7</b>	<b>118.0</b>		<b>122.95</b>	



SW-2, 16 JUL 2020 to 13 AUG 2020

SW-2, 16 JUL 2020 to 13 AUG 2020

ELEV 62	<b>D</b>	TDZE 57
---------	----------	---------

REIL Rwy 12L  
HIRL Rwys 12L-30R and 12R-30L

2300	ARTAQ	VGSI and RNAV glidepath not coincident (VGSI Angle 3.00/TCH 70).		WOXAR
↑ tr 306°		See planview for multiple IF locations.		1600
RW30L		306°		1600
		-4.7 NM		GP 3.00° TCH 54
CATEGORY	A	B	C	D
RNP 0.15 DA		421/40	364 (400-3/4)	
RNP 0.30 DA		544/60	487 (500-1 1/4)	
<b>AUTHORIZATION REQUIRED</b>				