

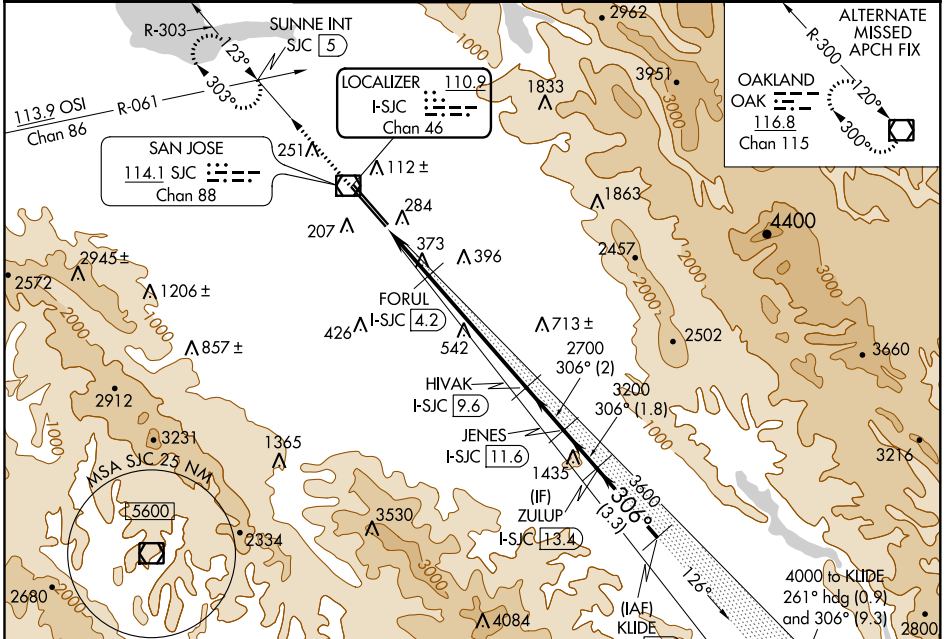
LOC/DME I-SJC 110.9 Chan 46	APP CRS 306°	Rwy Idg 7614 TDZE 57 Apt Elev 62	30L 7597 55 62	30R 55 62
--	------------------------	---	--------------------------------	------------------------

ILS or LOC RWY 30L

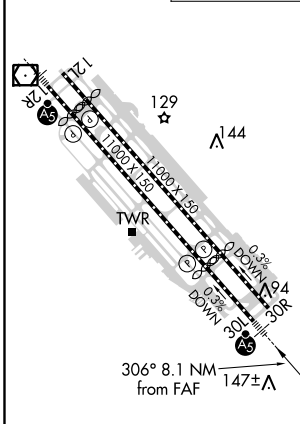
NORMAN Y MINETA SAN JOSE INTL (SJC)

<p>▼ DME required. ▲ # RVR 1800 authorized with use of FD or AP or HUD to DA.</p>	MALS Rwy 30L	<p>MISSED APPROACH: Climb to 1900 on SJC VOR/DME R-303 to SUNNE INT/SJC 5 DME and hold.</p>

D-ATIS 126.95	NORCAL APP CON 120.1 290.25	SAN JOSE TOWER* 124.0 (CTAF) 0 257.6	GND CON 121.7	CLNC DEL 118.0	CPDLC	UNICOM 122.95
-------------------------	---------------------------------------	---	-------------------------	--------------------------	-------	-------------------------



ELEV 62	D	TDZE 30L 57	TDZE 30R 55
---------	----------	-------------	-------------



1900	SUNNE INT	VGSi and ILS glidepath not coincident (VGSi Angle 3.00/TCH 70).		ZULUP I-SJC 13.4	KLIDE I-SJC 16.7
SJC R-303		FORUL I-SJC 4.2	HIVAK I-SJC 9.6	JENES I-SJC 11.6	
*LOC only		*I-SJC 3	I-SJC 1.4		
		2700	3200	3600	4000
		*1000	2700		
		1.6 NM	1.2	5.3 NM	2 NM
				1.8 NM	3.3 NM
					GS 3.00° TCH 54

CATEGORY	A	B	C	D
S-ILS 30L #	257/24 200 (200-1/2)			
S-LOC 30L	640/24	583 (600-1/2)	640-1 1/4	583 (600-1 1/4)
SIDESTEP 30R	640-1	585 (600-1)	640-1 1/2	585 (600-1 1/2)
			585 (600-1 1/2)	585 (600-2)

REIL Rwy 12L
HIRL Rwy 12L-30R and 12R-30L

SW-2, 16 JUL 2020 to 13 AUG 2020

SW-2, 16 JUL 2020 to 13 AUG 2020