

LOC/DME I-SLV <b>110.9</b> Chan <b>46</b>	APP CRS <b>126°</b>	Rwy Idg TDZE Apt Elev	12R <b>8587</b>	12L <b>8833</b>
---	------------------------	-----------------------------	--------------------	--------------------

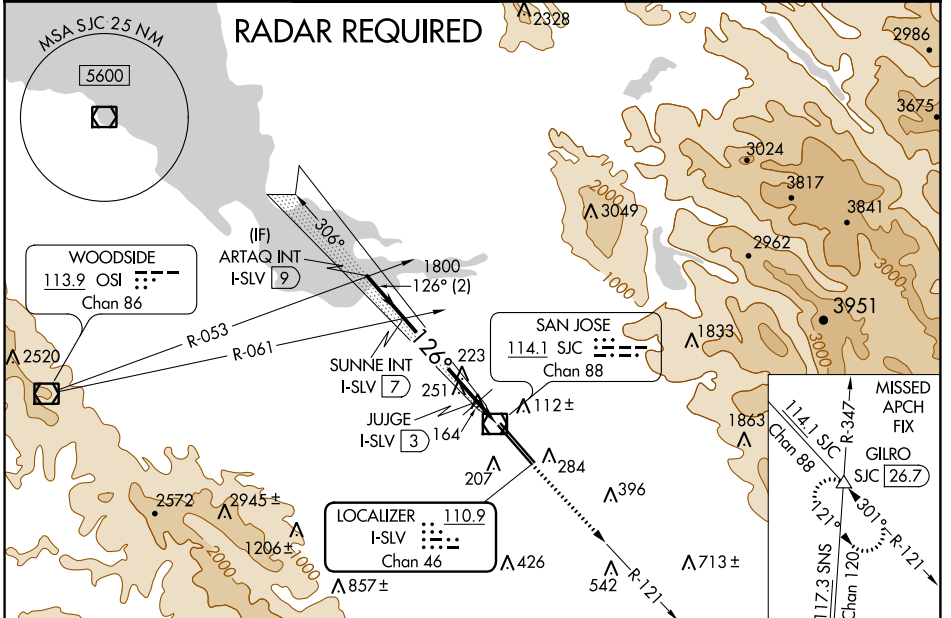
**ILS or LOC RWY 12R**  
NORMAN Y MINETA SAN JOSE INTL (SJC)

**DME required.**  
For inoperative MALS, increase S-LOC 12R  
Cat C/D visibility to 1 mile.

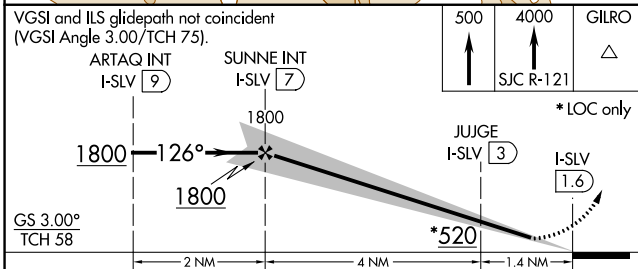
MALS  
Rwy 12R

**MISSED APPROACH:** Climb to 500 then climb to 4000  
on SJC VOR/DME R-121 to GILRO/SJC 26.7 DME  
and hold.

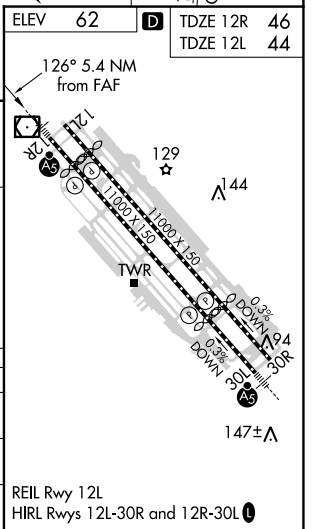
D-ATIS <b>126.95</b>	NORCAL APP CON <b>120.1 290.25</b>	SAN JOSE TOWER * <b>124.0 (CTAF) 257.6</b>	GND CON <b>121.7</b>	CLNC DEL <b>118.0</b>	CPDLC	UNICOM <b>122.95</b>
-------------------------	---------------------------------------	---	-------------------------	--------------------------	-------	-------------------------



ELEV 62	TDZE 12R 46	TDZE 12L 44
---------	-------------	-------------



CATEGORY	A	B	C	D
S-ILS 12R	251-1/2 205 (200-1/2)			
S-LOC 12R	420-1/2	374 (400-1/2)	420-5/8	374 (400-5/8)
SIDESTEP RWY 12L	600-1	556 (600-1)	600-1 1/2 556 (600-1 1/2)	600-2 556 (600-2)



SW-2, 16 JUL 2020 to 13 AUG 2020

SW-2, 16 JUL 2020 to 13 AUG 2020