

FAIRGROUNDS VISUAL RWYS 30L/R

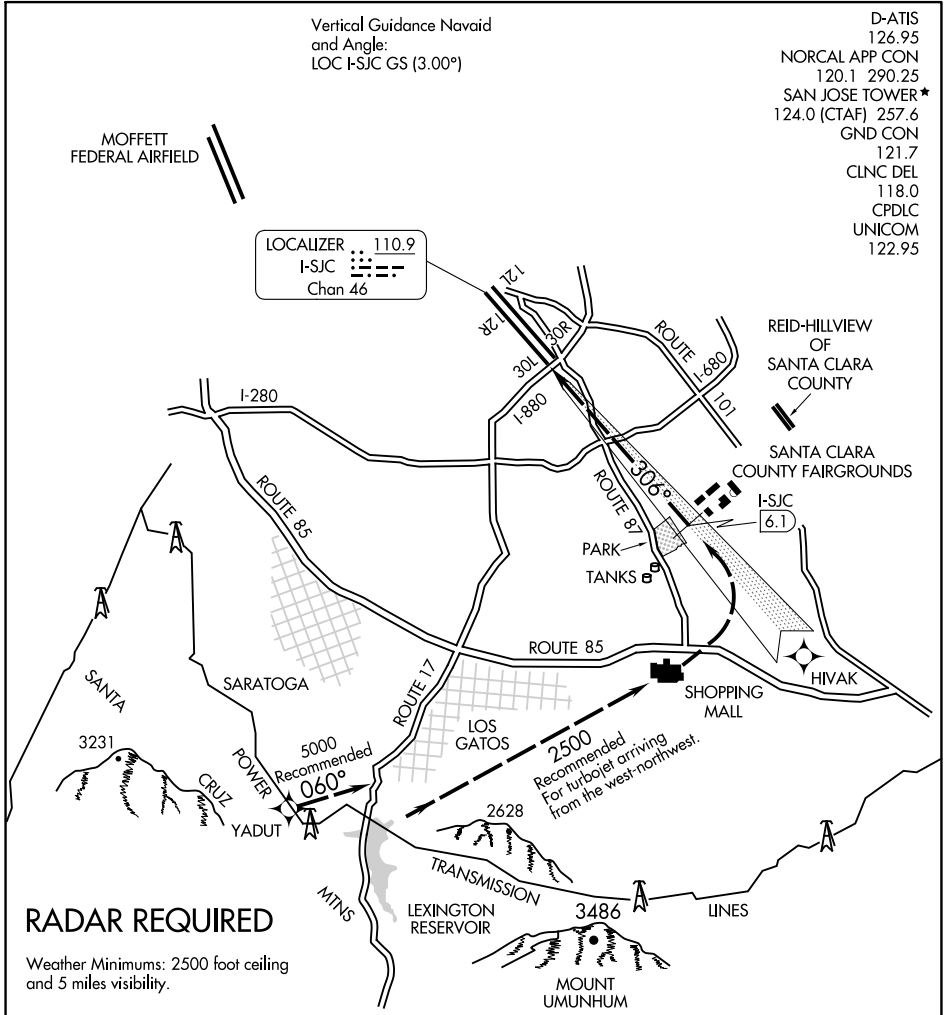
SAN JOSE, CALIFORNIA

Vertical Guidance Navaid
and Angle:
LOC I-SJC GS (3.00°)

D-ATIS 126.95
 NORCAL APP CON 120.1 290.25
 SAN JOSE TOWER* 124.0 (CTAF) 257.6
 GND CON 121.7
 CLNC DEL 118.0
 CPDLC UNICOM 122.95

MOFFETT FEDERAL AIRFIELD

LOCALIZER 110.9
 I-SJC
 Chan 46



SW-2, 16 JUL 2020 to 13 AUG 2020

SW-2, 16 JUL 2020 to 13 AUG 2020

RADAR REQUIRED

Weather Minimums: 2500 foot ceiling and 5 miles visibility.

1	2	3	4	5	6	7	8	9	10	11	12	13	14	15	16	17	18
---	---	---	---	---	---	---	---	---	----	----	----	----	----	----	----	----	----

FAIRGROUNDS VISUAL APPROACH RUNWAYS 30L/R

When cleared for Fairgrounds Visual Approach, aircraft should turn final no closer than I-SJC 6.1 DME for noise abatement.

NOTE: Closely spaced parallel visual approaches may be in progress to Runways 30L/R. In the event of a go-around on Runway 30L, proceed straight-ahead heading 300°, or on Runway 30R, turn right heading 120°, climb and maintain 4000, or as directed by ATC.

FAIRGROUNDS VISUAL RWYS 30L/R

SAN JOSE, CALIFORNIA