

WAAS CH <b>58207</b> W25A	APP CRS <b>252°</b>	Rwy Idg TDZE Apt Elev	<b>4196</b> <b>663</b> <b>684</b>
---------------------------------	------------------------	-----------------------------	---

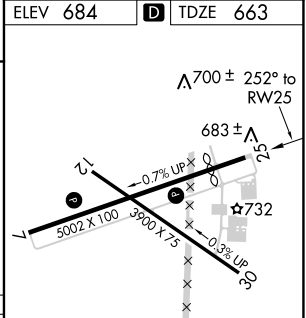
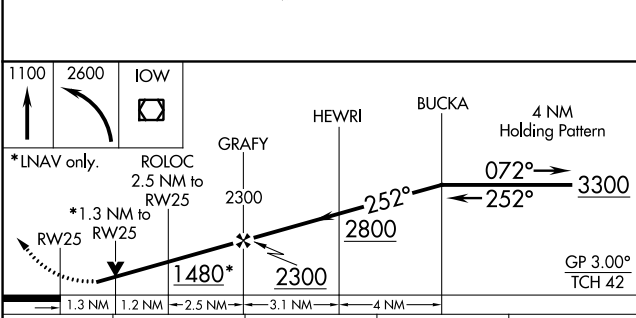
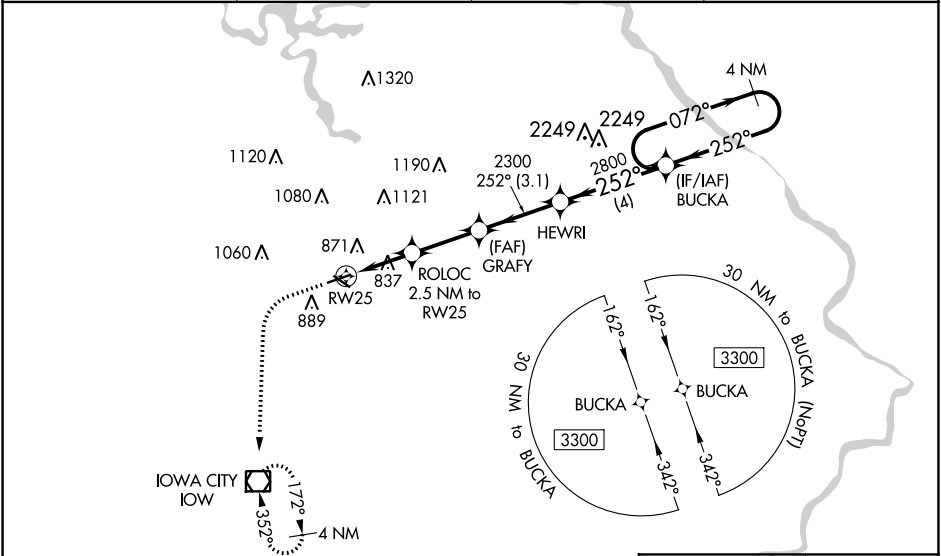
# RNAV (GPS) RWY 25

IOWA CITY MUNI (IOW)

**⚠** Circling to Rwy 7, 12, 30 NA at night. For uncompensated Baro-VNAV systems, LNAV/VNAV NA below -23°C (-9°F) or above 54°C (130°F). Baro-VNAV and VDP NA when using Cedar Rapids altimeter setting. Rwy 25 helicopter visibility reduction below ¼ SM NA. Rwy 7, 12, 30 helicopter visibility reduction below 1 SM NA. DME/DME RNP-0.3 NA. When local altimeter setting not received, use Cedar Rapids altimeter setting: increase LPV DA to 1056, increase LNAV/VNAV DA to 1196 feet and visibility ¼ SM; increase all MDAs 80 feet and visibility Cats C and D 1 ¼ SM increase Circling Cat D visibility ¼ SM.

**MISSED APPROACH:** Climb to 1100 then climbing left turn to 2600 direct IOW VOR/DME and hold.

ASOS <b>128.075</b>	CEDAR RAPIDS APP CON* <b>119.7 266.8</b>	CLNC DEL <b>119.05</b>	UNICOM <b>122.8 (CTAF) 1</b>
------------------------	---	---------------------------	---------------------------------



CATEGORY	A	B	C	D
LPV DA	992-1 3/8 329 (400-1 1/8)			
LNAV/VNAV DA	1132-1 5/8 469 (500-1 1/8)			
LNAV MDA	1100-1 437 (500-1)	1100-1 1/4 437 (500-1 1/4)		
<b>C</b> CIRCLING	1260-1 576 (600-1)	1440-2 1/4 756 (800-2 1/4)	1440-2 1/2 756 (800-2 1/2)	

REIL Rws 7 and 25  
MIRL Rws 7-25 and 12-30 **1**

NC-3, 16 JUL 2020 to 13 AUG 2020

NC-3, 16 JUL 2020 to 13 AUG 2020