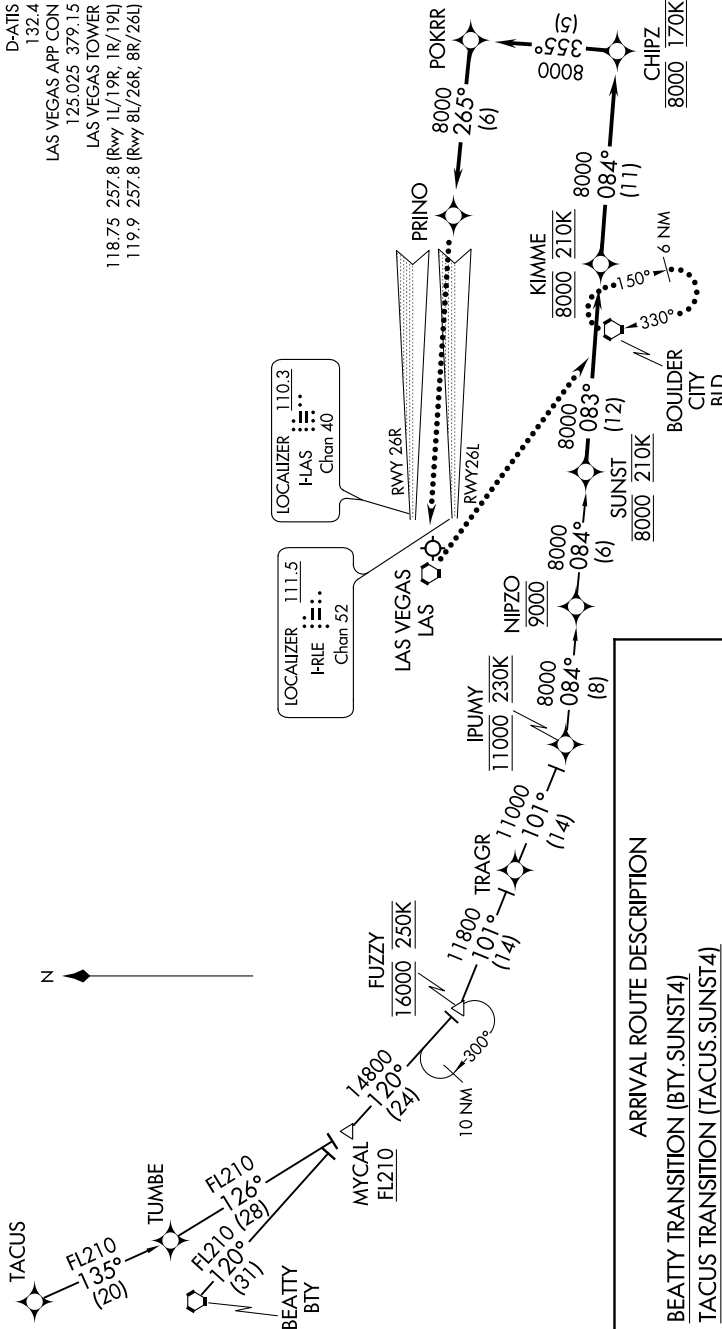


SUNST FOUR ARRIVAL (RNAV)

AL-662 (FAA)

MC CARRAN INTL (LAS)
LAS VEGAS, NEVADA



D-AITS 132.4
LAS VEGAS APP CON 125.025 379 1.5
LAS VEGAS TOWER 118.75 257.8 (Rwy 1L/19R, 1R/19L)
119.9 257.8 (Rwy 8L/26R, 8R/26L)

LOCALIZER 111.5 HRL Chan 52
LOCALIZER 110.3 HIAS Chan 40

ARRIVAL ROUTE DESCRIPTION
BEATY TRANSITION (BTY.SUNST4)
TACUS TRANSITION (TACUS.SUNST4)
 From SUNST on track 083° to cross KIMME at 8000 and at 210K, then as depicted to PRINO. Rwy 26L, intercept the Rwy 26L localizer.
LOST COMMUNICATIONS
 At PRINO, execute ILS RWY 26L approach, if unable, proceed direct LAS VORTAC, then direct BLD VORTAC and hold, maintain 8000.

NOTE: RADAR required.
 NOTE: RNAV 1.
 NOTE: DME/DME/IRU or GPS required.
 NOTE: For non-GPS equipped aircraft, BTY, PMD, and LSV DMEs must be operational.

NOTE: Chart not to scale.

SW-4, 16 JUL 2020 to 13 AUG 2020

SW-4, 16 JUL 2020 to 13 AUG 2020