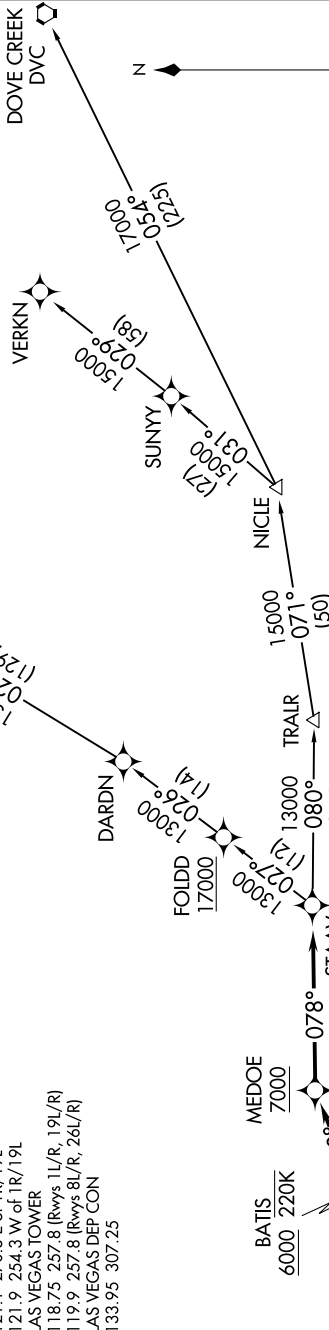


SW-4, 16 JUL 2020 to 13 AUG 2020

D-ATIS  
132.4  
CLNC DEL  
118.0  
CPDLC  
GND CON  
121.1 270.8 E of 1R/19L  
121.9 254.3 W of 1R/19L  
LAS VEGAS TOWER  
118.75 257.8 (Rwys 1L/R, 19L/R)  
119.9 257.8 (Rwys 8L/R, 26L/R)  
LAS VEGAS DEP CON  
133.95 307.25

NOTE: DME/DME/IRU or GPS required.  
NOTE: RNAV 1.  
NOTE: RADAR required.  
NOTE: Takeoff Rwys 26L/R, do not exceed 220K until BATIS.

TOP ALTITUDE:  
FL190



DEPARTURE ROUTE DESCRIPTION

TAKEOFF RUNWAY 26L: Climb heading 259° to 2682, then direct POOLZ, then on track 337° to cross TOMIS at or above 5000, then on track 036° to cross BATIS at or above 6000, then on track 058° to cross MEDOE at or above 7000, then on track 078° to cross STAAV at or above 13000. Thence. . . .

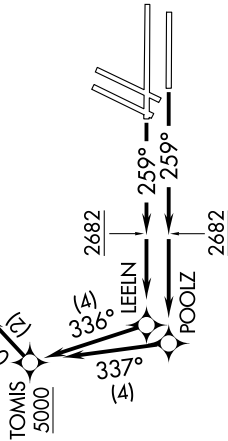
TAKEOFF RUNWAY 26R: Climb heading 259° to 2682, then direct LEELIN, then on track 336° to cross TOMIS at or above 5000, then on track 036° to cross BATIS at or above 6000, then on track 058° to cross MEDOE at or above 7000, then on track 078° to cross STAAV at or above 13000. Thence. . . .

. . . . on (transition). Maintain FL190, expect filed altitude 10 minutes after departure.

DOVE CREEK TRANSITION (STAAV8.DVC)

MILFORD TRANSITION (STAAV8.MLF)

VERKIN TRANSITION (STAAV8.VERKIN)



TAKEOFF MINIMUMS  
Rwys 26L/26R: Standard with minimum climb of 313' per NM to 4500.

NOTE: Chart not to scale.

SW-4, 16 JUL 2020 to 13 AUG 2020