

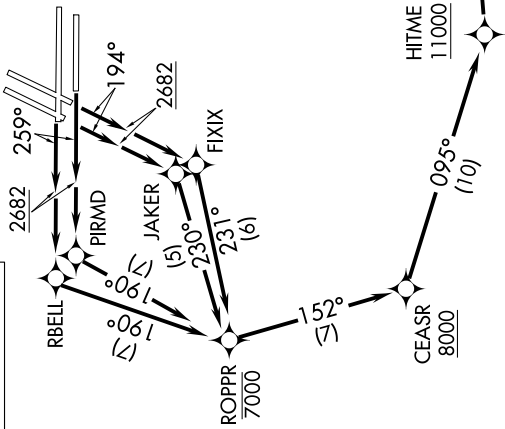
PRFUM FOUR DEPARTURE (RNAV)

AL-662 (FAA)

MC CARRAN INTL (LAS)
LAS VEGAS, NEVADA

SW-4, 16 JUL 2020 to 13 AUG 2020

TOP ALTITUDE:
FL190



NOTE: DME/DME/IRU or GPS required.
 NOTE: RNAV 1.
 NOTE: For non-GPS equipped aircraft: LAS DME must be operational.
 NOTE: RADAR required.

TAKEOFF MINIMUMS
 Rwys 1L/R, 8L/R: NA- air traffic.
 Rwys 19L/R: Standard with minimum climb of 295' per NM to 5200.
 Rwy 26L/R: Standard with minimum climb of 275' per NM to 5600.

(NARRATIVE ON FOLLOWING PAGE)

NOTE: Chart not to scale.

PRFUM FOUR DEPARTURE (RNAV)

SW-4, 16 JUL 2020 to 13 AUG 2020