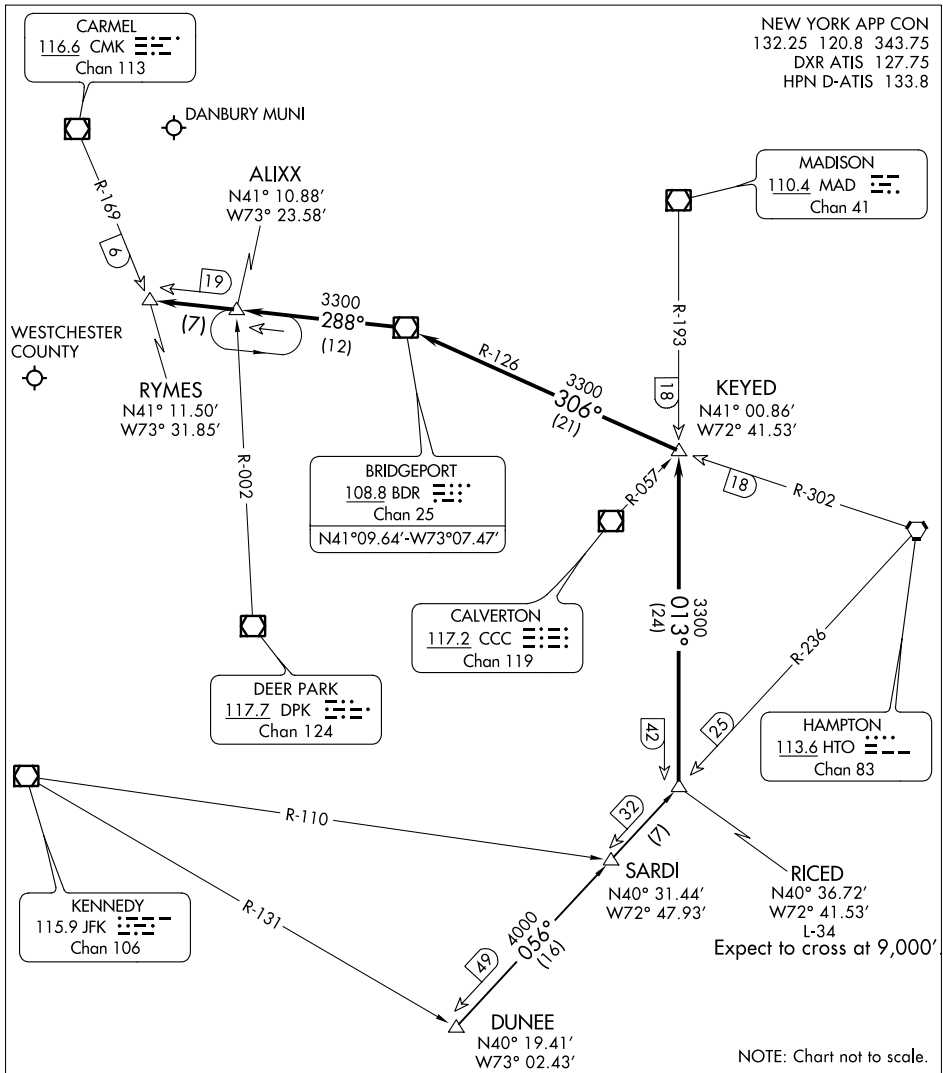


RICED FOUR ARRIVAL

WHITE PLAINS, NEW YORK



NE-2, 16 JUL 2020 to 13 AUG 2020

NE-2, 16 JUL 2020 to 13 AUG 2020

ARRIVAL ROUTE DESCRIPTION

DUNEE TRANSITION (DUNEE.RICED4): From over DUNEE INT via HTO R-236 to RICED INT, thence. . . .

. . . .from over RICED INT via MAD R-193 to intercept BDR R-126 to BDR VOR/DME then via BDR R-288 to RYMES INT. Expect RADAR vectors to final approach course.

RICED FOUR ARRIVAL

WHITE PLAINS, NEW YORK