

# NDB RWY 1 YELLOWSTONE (WYS)

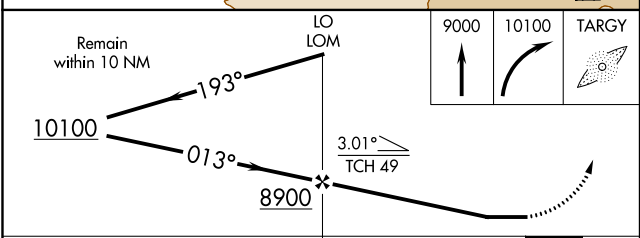
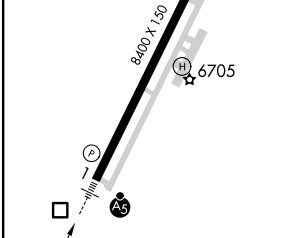
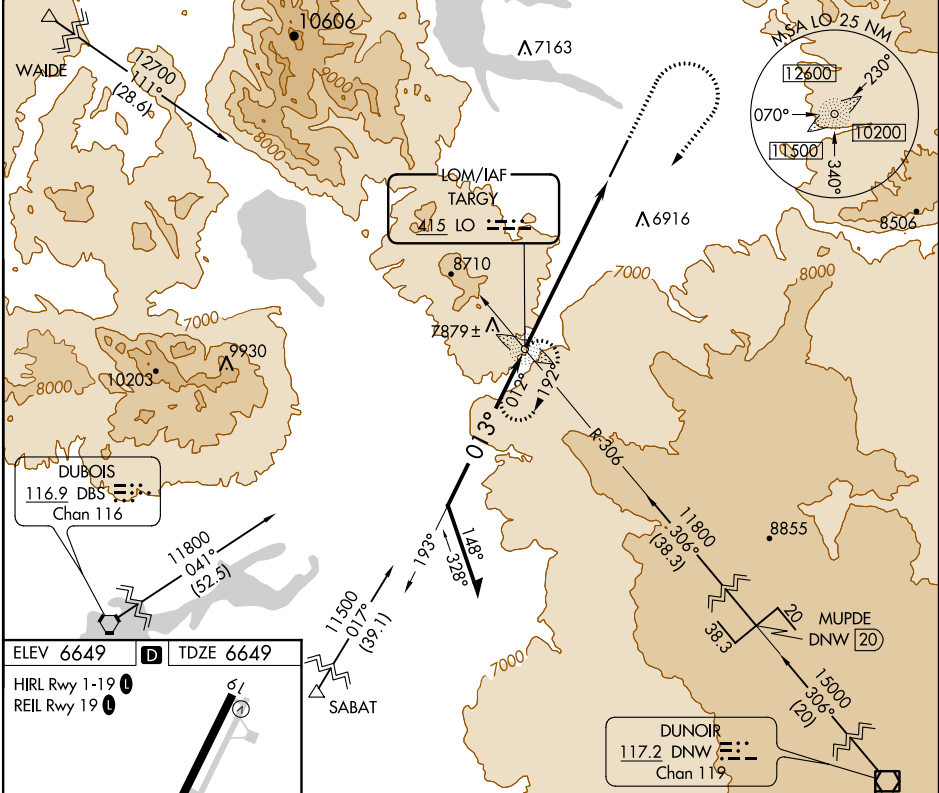
LOM LO <b>415</b>	APP CRS <b>013°</b>	Rwy Idg TDZE Apt Elev	<b>8399</b> <b>6649</b> <b>6649</b>
----------------------	------------------------	-----------------------------	---



Obtain local altimeter setting on CTAF, when not received procedure NA. Inoperative table does not apply to S-1 Cat A and Cat B.

**MALSR**  


**MISSED APPROACH:** Climb to 9000 then climbing right turn to 10100 direct TARGY LOM and hold.

AWOS-3P <b>118.1</b>	SALT LAKE CENTER <b>132.4 338.3</b>	UNICOM <b>123.0 (CTAF)</b>
-------------------------	--	-------------------------------



ELEV 6649					TDZE 6649				
HIRL Rwy 1-19					REIL Rwy 19				
									
FAF to MAP 6.9 NM									
Knots	60	90	120	150	180				
Min:Sec	6:54	4:36	3:27	2:46	2:18				

CATEGORY	A	B	C	D
S-1	8240-1¼ 1591 (1600-1¼)	8240-1½ 1591 (1600-1½)	8240-2½ 1591 (1600-2½)	8240-2¾ 1591 (1600-2¾)
<b>CIRCLING</b>	8240-1¼ 1591 (1600-1¼)	8240-1½ 1591 (1600-1½)	8240-3	1591 (1600-3)

NW-1, 16 JUL 2020 to 13 AUG 2020

NW-1, 16 JUL 2020 to 13 AUG 2020