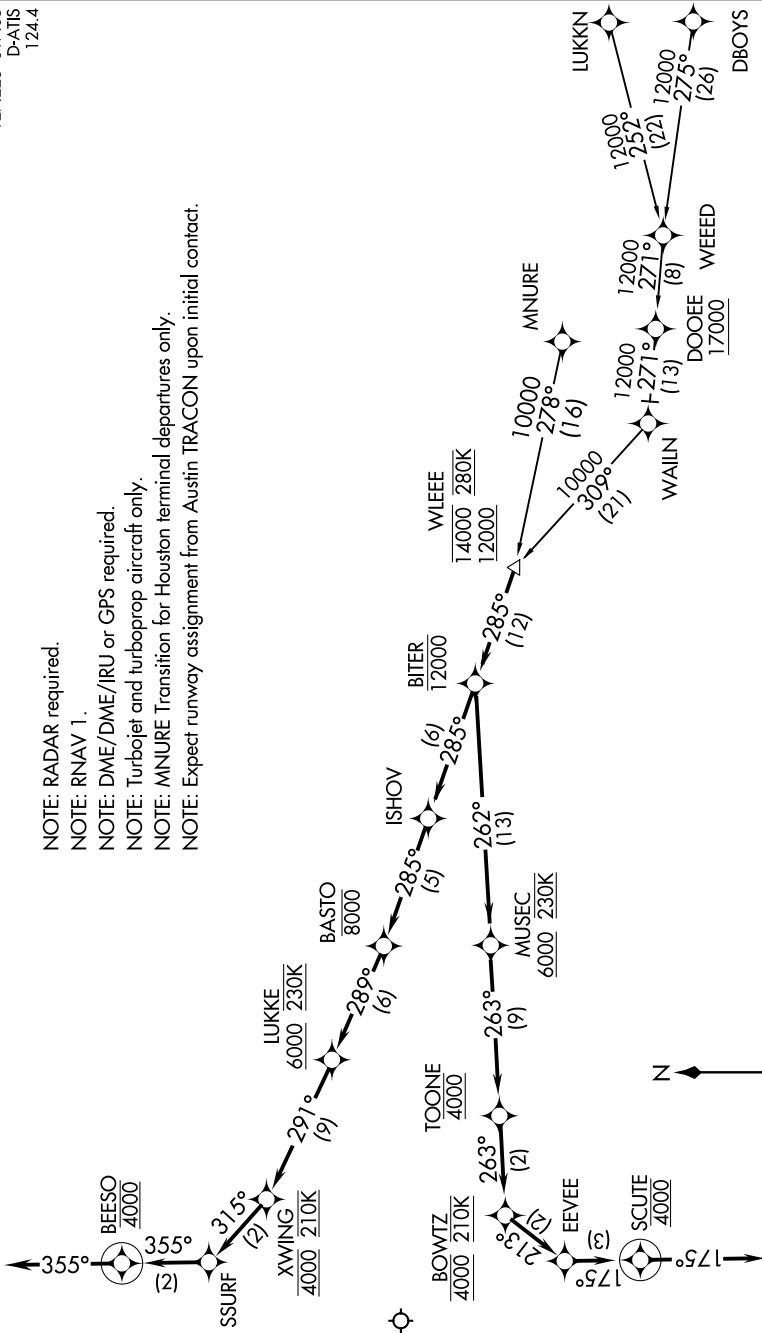


# WLEEE FIVE ARRIVAL (RNAV)

AUSTIN APP CON  
127.225 317.65  
D-ATIS  
124.4

- NOTE: RADAR required.
- NOTE: RNAV 1.
- NOTE: DME/DME/IRU or GPS required.
- NOTE: Turbojet and turboprop aircraft only.
- NOTE: MNLURE Transition for Houston terminal departures only.
- NOTE: Expect runway assignment from Austin TRACON upon initial contact.



(NARRATIVE ON FOLLOWING PAGE)

NOTE: Chart not to scale.

# WLEEE FIVE ARRIVAL (RNAV)