

LOC/DME I-GFQ 110.95 Chan 46(Y)	APP CRS 175°	Rwy Idg 12250 TDZE 542 Apt Elev 542
---	------------------------	--

ILS or LOC RWY 17R

AUSTIN-BERGSTROM INTL (AUS)

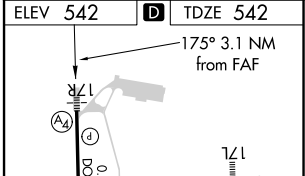
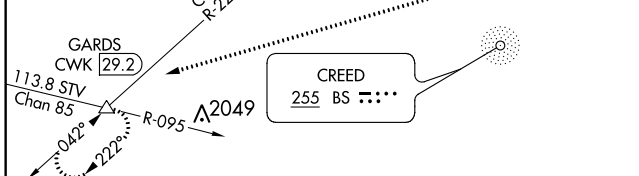
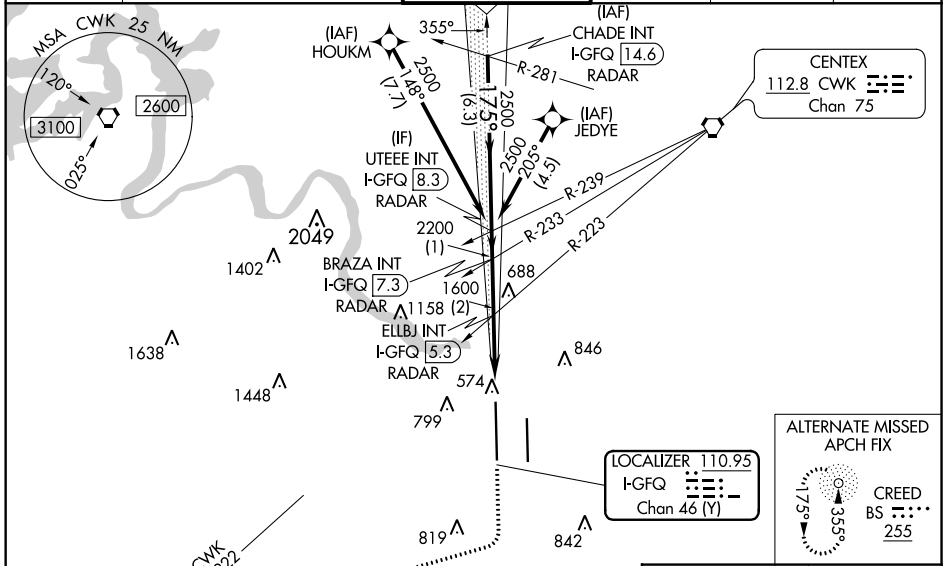
RNAV 1 - GPS or RADAR required for procedure entry.
From HOUKM, JEDYE: RNAV 1 - GPS required.

⚠ Simultaneous approach authorized. For inop ALS, increase S-LOC 17R Cats C/D/E visibility to RVR 4500.

MALS **(A2)**

MISSED APPROACH: Climb to 1000 then climbing right turn to 3500 on heading 250° and CWK VORTAC R-222 to GARDS INT/CWK 29.2 DME and hold.

D-ATIS 124.4	AUSTIN APP CON 127.225 317.65 (EAST) 120.875 270.25 (SOUTH) 119.0 370.85 (WEST)	AUSTIN TOWER 121.0 281.5	GND CON 121.9 348.6	CLNC DEL 125.5 263.0	CPDLC
------------------------	---	------------------------------------	-------------------------------	--------------------------------	-------



CHADE INT I-GFQ [14.6] RADAR	UTEEE INT I-GFQ [8.3] RADAR	BRAZA INT I-GFQ [7.3] RADAR	ELLBJ INT I-GFQ [5.3] RADAR	1000	3500	CWK R-222	GARDS
*LOC only.				hdg 250°			
4000 - 175°				*I-GFQ [2.9]			
2500				I-GFQ [2.2]			
2200							
1600							
1600							
6.3 NM				1 NM			
2 NM				2.3 NM			
0.8 NM							

ELEV 542	D TDZE 542
175° 3.1 NM from FAF	
TWR 727	
680	
35L	
35R	
TDZ/CL Rwy 17L and 35R	
HIRL Rwy 17L-35R and 17R-35L	
FAF to MAP 3.1 NM	
Knots	60 90 120 150 180
Min:Sec	3:06 2:04 1:33 1:14 1:02

CATEGORY	A	B	C	D	E
S-ILS 17R		742/40	200 (200-¾)		
S-LOC 17R		860/40	318 (400-¾)		

SC-3, 16 JUL 2020 to 13 AUG 2020

SC-3, 16 JUL 2020 to 13 AUG 2020