

OMAHA, NEBRASKA

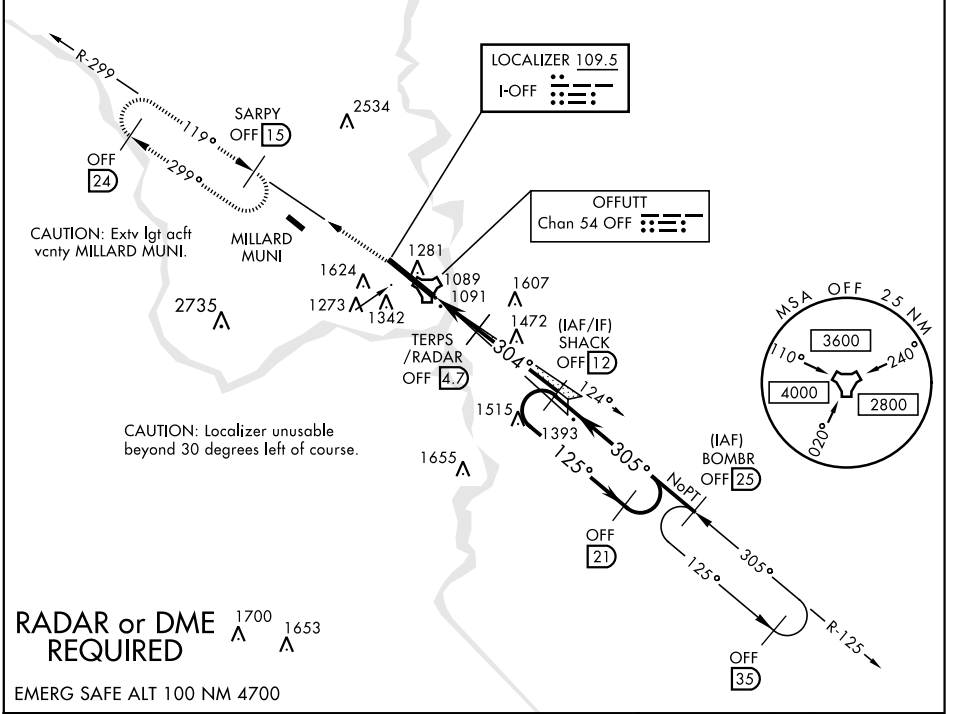
ILS or LOC Y RWY 30

LOC I-OFF 109.5	APCH CRS 304°	Rwy ldg 10,612 TDZE 985 Arprt Elev 1049	AL-544 [USAF]	OFFUTT AFB (KOFF)
---------------------------	-------------------------	--	---------------	-------------------

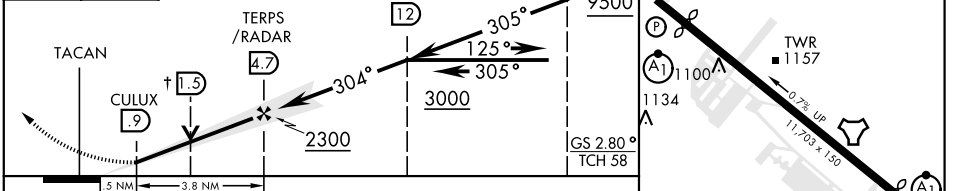
A1
MISSED APPROACH: Climb to 3000 via OFF TACAN R-299 to SARPY and hold.

ATIS 126.025 273.5	OMAHA APP CON E 124.5 263.0 W 120.1 354.05	OFFUTT TOWER 123.7 279.625	GND CON 121.7 289.4
------------------------------	--	--------------------------------------	-------------------------------

*** Circling not authorized N of Rwy 12-30.
CAUTION: When Rwy 12 VGSi inop, circling to Rwy 12 not authorized at night.



3000 OFF R-299	SARPY OFF 15	† LOC only	ELEV 1049	TDZE 985
-------------------	--	------------	-----------	----------



CATEGORY S-ILS 30 * S-LOC 30 ** *** CIRCLING	A 1360/24 1500-1 451 (500-1)	B 1185/24 375 (400-½) 1600-1 551 (600-1)	C 200 1360/35 1680-1¾ 631 (700-1¾)	D (200-½) 375 (400-¾)	E 891 (900-3)	
FAF to MAP 3.8 NM						
Knots		60	90	120	150	180
Min:Sec		3:48	2:32	1:54	1:31	1:16

OMAHA, NEBRASKA 41°07'N-95°54'W OFFUTT AFB (KOFF)

Amdt 5 13SEP18

ILS or LOC Y RWY 30

NC-2, 16 JUL 2020 to 13 AUG 2020

NC-2, 16 JUL 2020 to 13 AUG 2020