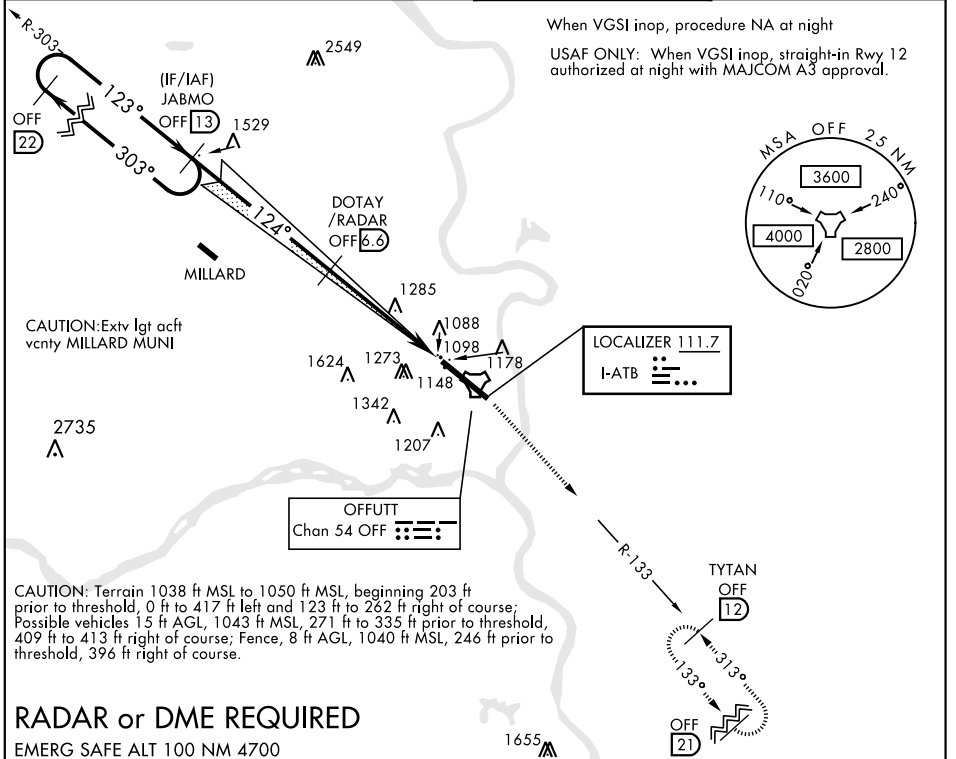


ILS or LOC RWY 12

LOC I-ATB 111.7	APCH CRS 124°	Rwy ldg 10,696' TDZE 1049' Arprt Elev 1049'	AL-544 [USAF]	OFFUTT AFB (KOFF)
* When ALS inop, increase CAT AB RVR to 55, CAT CDE vis to 1 3/8 miles. ** Circling not authorized N of Rwy 12-30.			ALSF-1 	MISSED APPROACH: Climb to 3000 via OFF TACAN R-133 to TYTAN and hold.

ATIS 126.025 273.5	OMAHA APP CON E 124.5 263.0 W 120.1 354.05	OFFUTT TOWER 123.7 279.625	GND CON 121.7 289.4
------------------------------	--	--------------------------------------	-------------------------------



NC-2, 16 JUL 2020 to 13 AUG 2020

NC-2, 16 JUL 2020 to 13 AUG 2020

RADAR or DME REQUIRED

EMERG SAFE ALT 100 NM 4700

JABMO 13	Rwy 12 ILS glideslope unusable beyond 5° left of LOC course	3000 OFF R-133	TYTAN OFF 12	ELEV 1049	TDZE 1049
		DOTAY /RADAR 6.6	TACAN	124° 5.4 NM from FAF	HIRL Rwy 12-30
		GAYEB 1.7	TWR 1157	1255	1178
		1100	1134	1088	11178
CATEGORY	A	B	C	D	E
S-ILS 12	1299/50		250	(300-1)	
S-LOC 12 *	1580/50	531 (600-1)	1580/55	531	(600-1)
CIRCLING **	1580-1 531 (600-1)	1600-1 551 (600-1)	1680-1 3/4 631 (700-1 3/4)	1940-3	891 (900-3)
FAF to MAP 4.9 NM					
Knots	60	90	120	150	180
Min:Sec	4:54	3:16	2:27	1:58	1:38

ILS or LOC RWY 12