

HI-TACAN Z RWY 12

TACAN OFF Chan 54	APCH CRS 119°	Rwy ldg 10,696 TDZE 1049 Arprt Elev 1049	JAL-544 [USAF]	OFFUTT AFB (KOFF)
-----------------------------	-------------------------	---	----------------	-------------------

V *When ALS inop, increase CAT CDE vis to 1½ miles.
 **Circling not authorized N of Rwy 12-30.



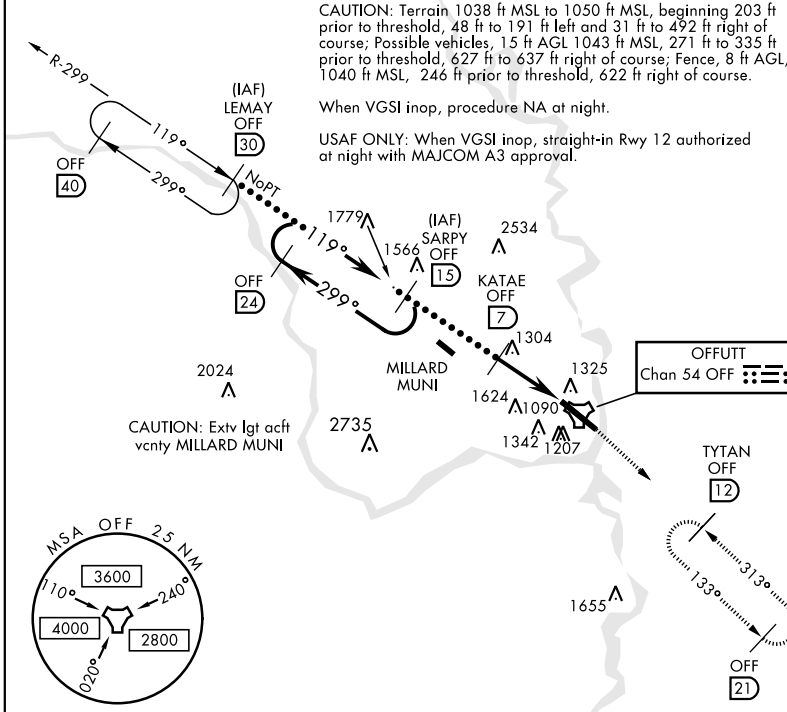
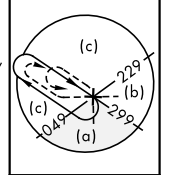
MISSED APPROACH: Climb to 3000 via OFF TACAN R-133 to TYTAN and hold.

ATIS 126.025 273.5	OMAHA APP CON E 124.5 263.0 W 120.1 354.05	OFFUTT TOWER 123.7 279.625	GND CON 121.7 289.4
------------------------------	--	--------------------------------------	-------------------------------

CAUTION: Terrain 1038 ft MSL to 1050 ft MSL, beginning 203 ft prior to threshold, 48 ft to 191 ft left and 31 ft to 492 ft right of course; Possible vehicles, 15 ft AGL 1043 ft MSL, 271 ft to 335 ft prior to threshold, 627 ft to 637 ft right of course; Fence, 8 ft AGL, 1040 ft MSL, 246 ft prior to threshold, 622 ft right of course.

When VGSI inop, procedure NA at night.

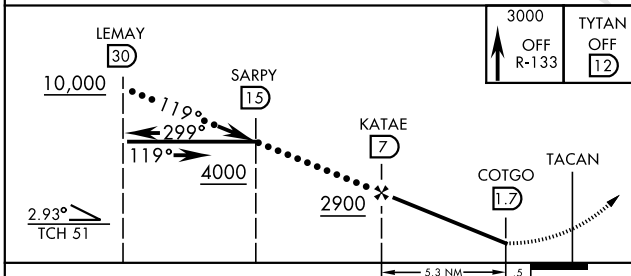
USAF ONLY: When VGSI inop, straight-in Rwy 12 authorized at night with MAJCOM A3 approval.



NC-2, 16 JUL 2020 to 13 AUG 2020

NC-2, 16 JUL 2020 to 13 AUG 2020

EMERG SAFE ALT 100 NM 4700



ELEV 1049	TDZE 1049
HIRL Rwy 12-30	
Rwy 12 ldg 10,696' Rwy 30 ldg 10,612' Rwy 12-30 ALS nstd	

CATEGORY	C	D	E
S-12*	1620-1¼	571 (600-1¼)	
CIRCLING**	1680-1¾ 631 (700-1¾)	1940-3	891 (900-3)

HI-TACAN Z RWY 12