

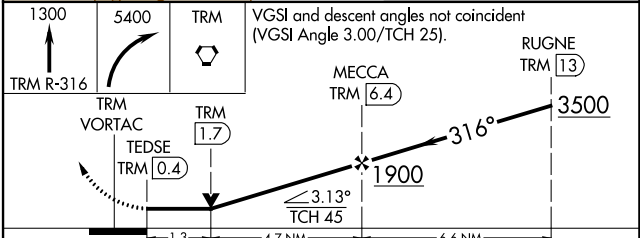
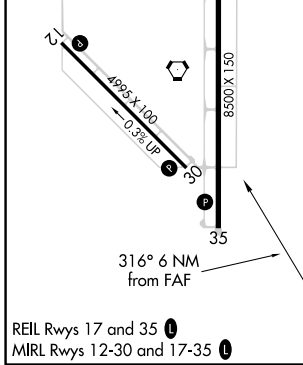
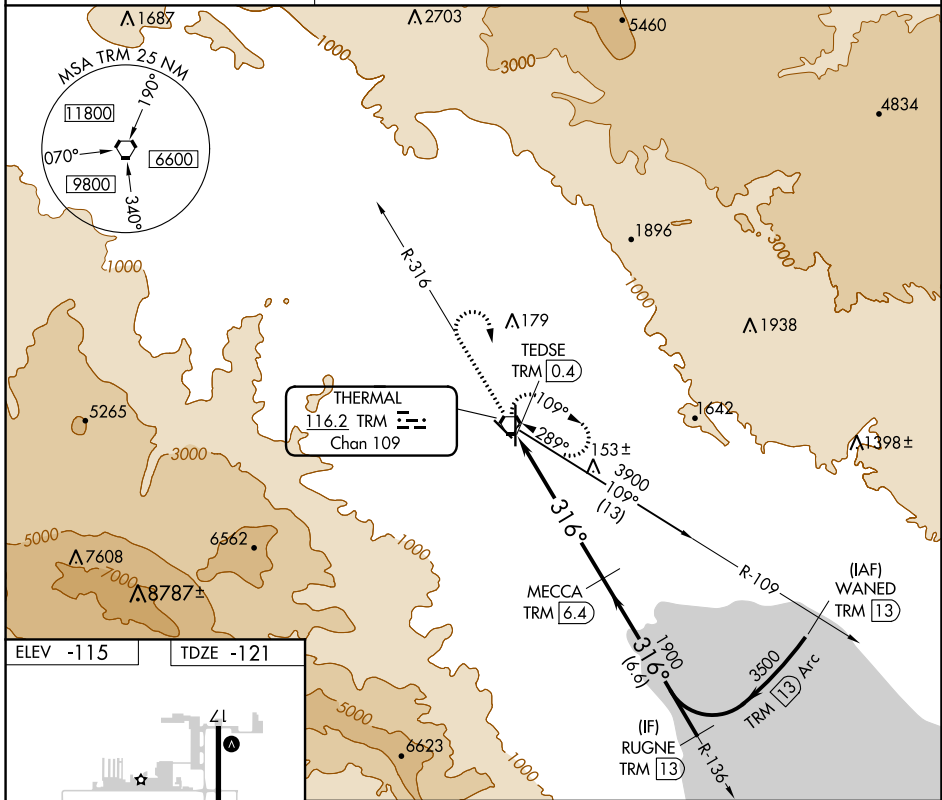
VORTAC TRM 116.2 Chan 109	APP CRS 316°	Rwy ldg TDZE Apt Elev 4995 -121 -115
---	------------------------	--

VOR RWY 30

JACQUELINE COCHRAN RGNL (TRM)

DME required.	MISSED APPROACH: Climb to 1300 on TRM VORTAC R-316 then climbing right turn to 5400 direct TRM VORTAC and hold, continue climb-in-hold to 5400.
▼ ▲ Rwy 30 helicopter visibility reduction below ¾ SM NA.	

ASOS 118.325	SOCAL APP CON* 135.275 251.1	UNICOM 123.0 (CTAF) 0
------------------------	--	--



	A		B		C		D	
CATEGORY	300-1		421 (500-1)		300-1¼		421 (500-1¼)	
S-30	320-1		340-1		460-1½		780-3	
CIRCLING	435 (500-1)		455 (500-1)		575 (600-1½)		895 (900-3)	

SW-3, 16 JUL 2020 to 13 AUG 2020

SW-3, 16 JUL 2020 to 13 AUG 2020