

VOR/DME ACV <b>115.05</b> Chan <b>97 (Y)</b>	APP CRS <b>123°</b>	Rwy Idg TDZE Apt Elev	<b>5601</b> <b>205</b> <b>222</b>
--	------------------------	-----------------------------	---

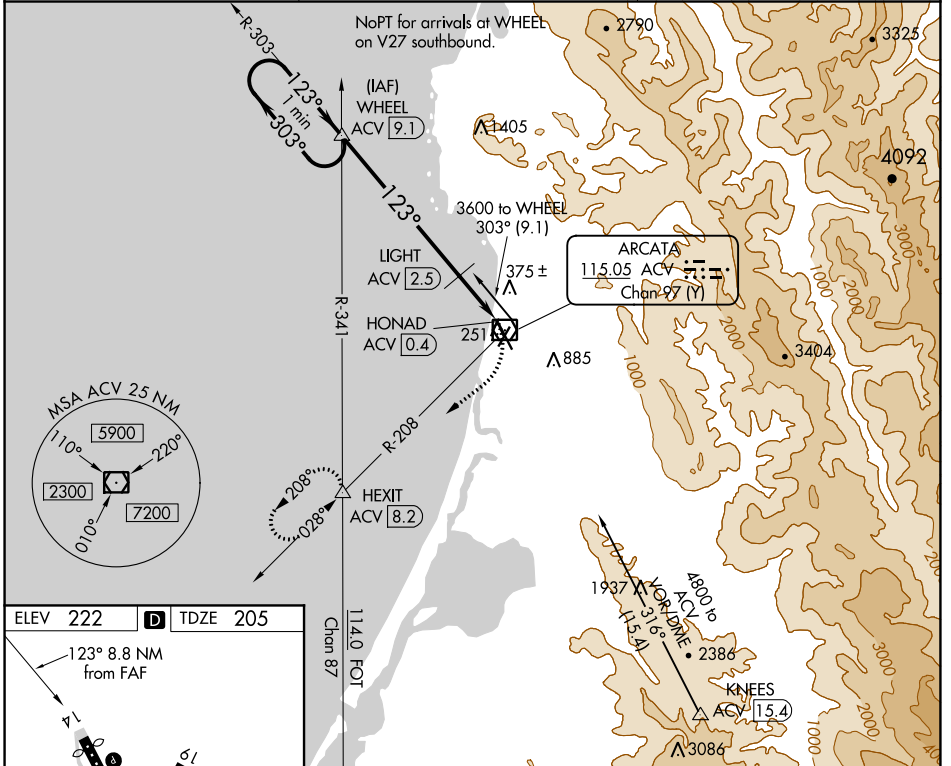
# VOR RWY 14

CALIFORNIA REDWOOD COAST-HUMBOLDT COUNTY (ACV)

**DME required.**  
Circling NA northeast of Rwy 14-32.  
Rwy 14 helicopter visibility reduction below 3/4 SM NA.

**MISSED APPROACH:** Climbing right turn to 3000 on ACV R-208 to HEXIT INT/ 8.2 DME and hold, continue climb-in-hold to 3000.

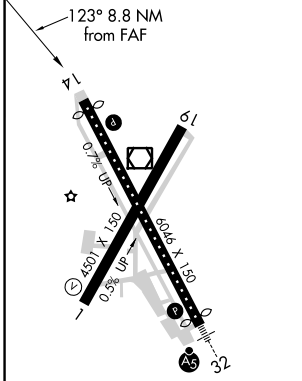
ASOS <b>118.525</b>	SEATTLE CENTER <b>124.85 306.3</b>	UNICOM <b>123.0 (CTAF)</b>
------------------------	---------------------------------------	-------------------------------



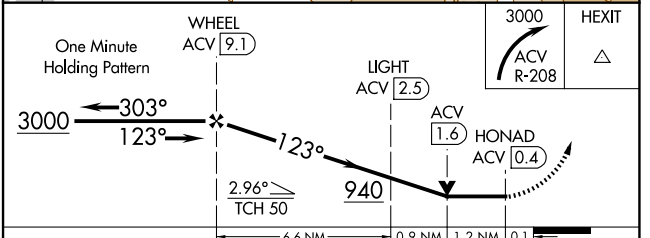
SW-2, 16 JUL 2020 to 13 AUG 2020

SW-2, 16 JUL 2020 to 13 AUG 2020

ELEV 222	<b>D</b>	TDZE 205
----------	----------	----------



- MIRL Rwy 1-19
- HIRL Rwy 14-32
- REIL Rwy 14
- REIL Rwy 1



CATEGORY	A	B	C	D
S-14	640/55	435 (500-1)	640-1 1/4	435 (500-1 1/4)
<b>C</b> CIRCLING	640-1 418 (500-1)	680-1 458 (500-1)	840-1 3/4 618 (700-1 3/4)	880-2 658 (700-2)