

WAAS CH <b>63200</b> W01A	APP CRS <b>013°</b>	Rwy Idg TDZE Apt Elev	<b>4501</b> <b>204</b> <b>222</b>
---------------------------------	------------------------	-----------------------------	---

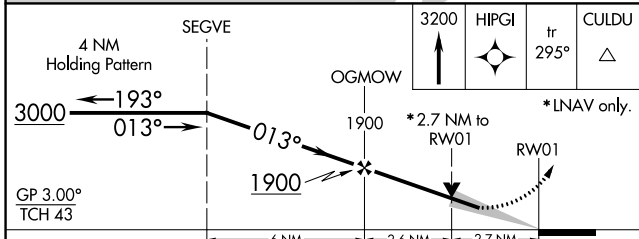
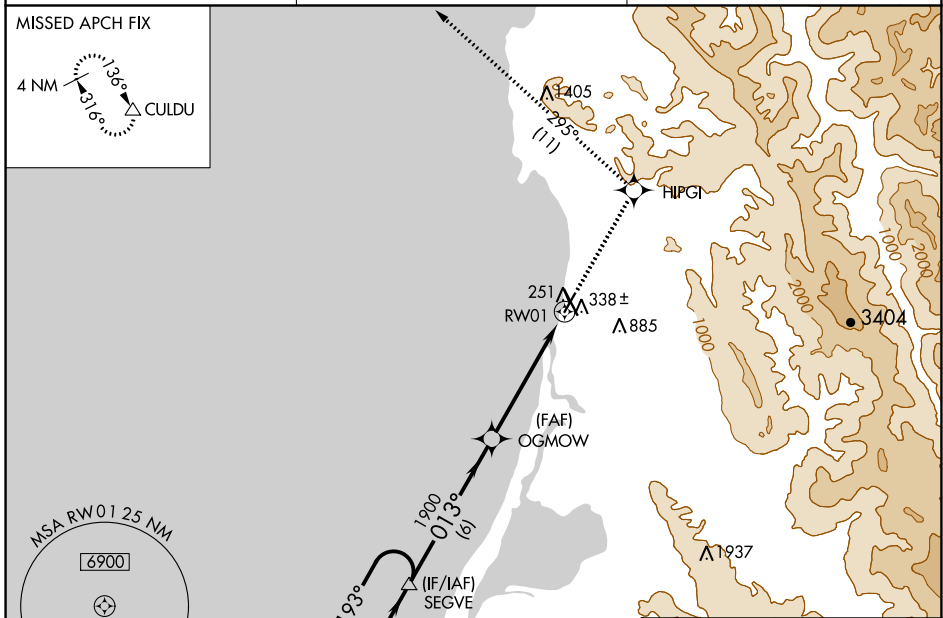
# RNAV (GPS) RWY 1

CALIFORNIA REDWOOD COAST-HUMBOLDT COUNTY (ACV)

**⚠** For uncompensated Baro-VNAV systems, LNAV/VNAV NA below -2°C (29°F) or above 54°C (130°F). Circling NA northeast of Rwy 14-32.  
DME/DME RNP-0.3 NA.

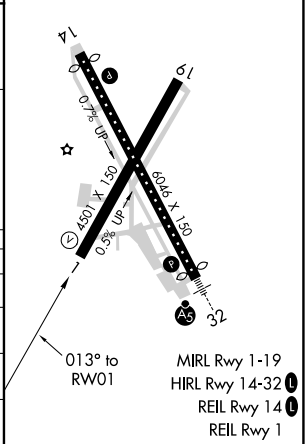
**MISSED APPROACH:** Climb to 3200 direct HIPGI and on track 295° to CULDU and hold.

ASOS <b>118.525</b>	SEATTLE CENTER <b>124.85 306.3</b>	UNICOM <b>123.0 (CTAF)</b>
------------------------	---------------------------------------	-------------------------------



ELEV 222	TDZE 204
----------	----------

CATEGORY	A	B	C	D
LPV DA		870-2½	666 (700-2½)	
LNAV/VNAV DA		838-2½	634 (700-2½)	
LNAV MDA	1080-1 876 (900-1)	1080-1¼ 876 (900-1¼)	1080-2½	876 (900-2½)
<b>C</b> CIRCLING	1080-1¼	858 (900-1¼)	1080-2½ 858 (900-2½)	1080-2¾ 858 (900-2¾)



SW-2, 16 JUL 2020 to 13 AUG 2020

SW-2, 16 JUL 2020 to 13 AUG 2020