

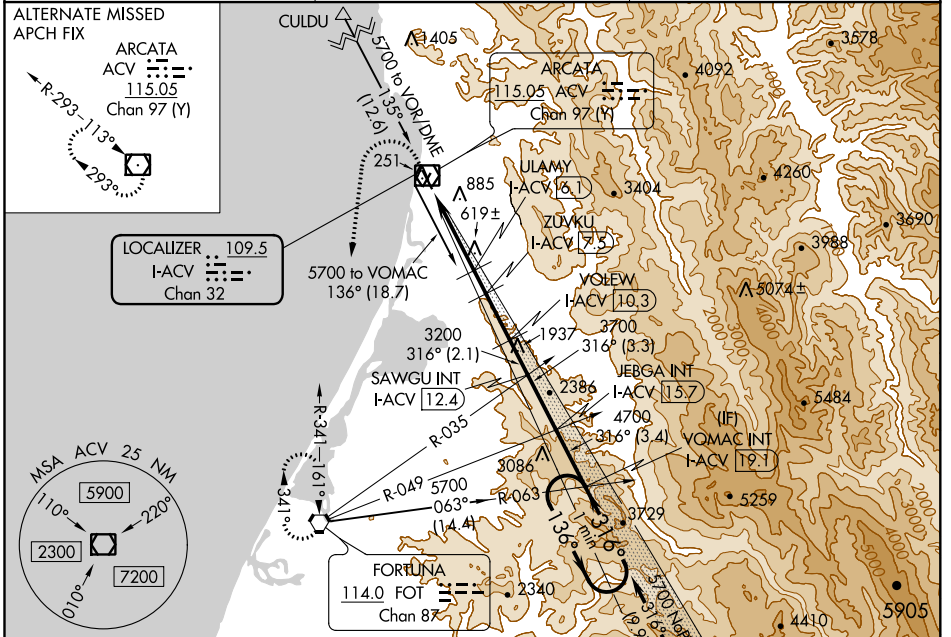
LOC/DME I-ACV <b>109.5</b> Chan <b>32</b>	APP CRS <b>316°</b>	Rwy Idg TDZE Apt Elev	<b>5846</b> <b>221</b> <b>222</b>
---	------------------------	-----------------------------	---

# ILS or LOC RWY 32

CALIFORNIA REDWOOD COAST-HUMBOLDT COUNTY (ACV)

<p><b>NA</b> Circling NA northeast of Rwy 14-32. DME required.</p>	<p><b>MALSR</b></p>	<p><b>MISSED APPROACH:</b> Climb to 800 then climbing left turn to 3000 direct FOT VORTAC and hold.</p>
--	---------------------	---

<p><b>ASOS</b> <b>118.525</b></p>	<p><b>SEATTLE CENTER</b> <b>124.85 306.3</b></p>	<p><b>UNICOM</b> <b>123.0 (CTAF)</b></p>
---------------------------------------	--	--

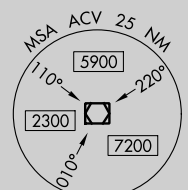


**ALTERNATE MISSED APCH FIX**

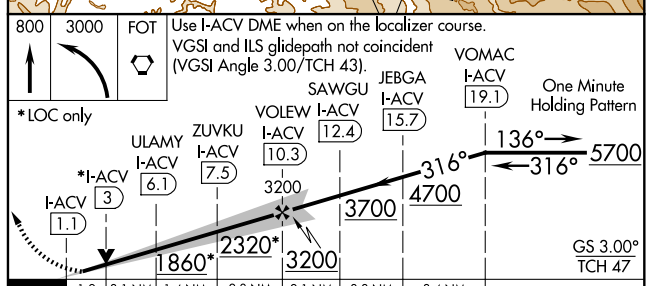
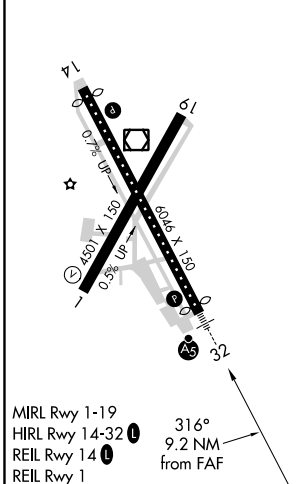
ARCATA ACV 115.05 Chan 97 (Y)

R-293-113°

**LOCALIZER 109.5**  
I-ACV Chan 32



ELEV 222	<b>D</b>	TDZE 221
----------	----------	----------



CATEGORY	A	B	C	D
S-ILS 32	441/18 220 (300-1/2)			
S-LOC 32	880/24	659 (700-1/2)	880-1 3/8	659 (700-1 3/8)
<b>C</b> CIRCLING	880-1	658 (700-1)	880-1 7/8	880-2 658 (700-2)

SW-2, 16 JUL 2020 to 13 AUG 2020

SW-2, 16 JUL 2020 to 13 AUG 2020