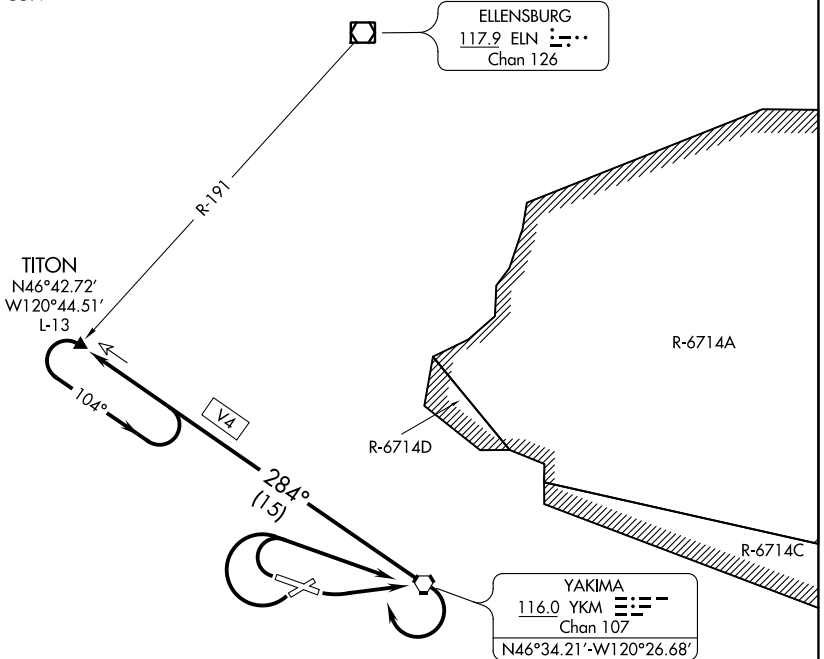


(YKM7.YKM) 18312

YAKIMA SEVEN DEPARTURE

YAKIMA AIR TERMINAL/MCALLISTER FIELD (YKM)
AL-465 (FAA) YAKIMA, WASHINGTON

ATIS
125.25
CLNC DEL
121.9
GND CON
121.9
YAKIMA TOWER*
133.25 257.8
CHINOOK DEP CON*
123.8 263.15



NW-1, 16 JUL 2020 to 13 AUG 2020

NW-1, 16 JUL 2020 to 13 AUG 2020

TAKEOFF MINIMUMS

- Rwy 4: NA - obstacles.
- Rwy 9: Standard with minimum climb of 325' per NM to 5000.
- Rwy 22: Standard with minimum climb of 325' per NM to 5000.
- Rwy 27: Standard with minimum climb of 325' per NM to 5000.

NOTE: Chart not to scale.



DEPARTURE ROUTE DESCRIPTION

TAKEOFF RUNWAY 9: Climbing left turn direct YKM VORTAC, Thence. . . .

TAKEOFF RUNWAYS 22, 27: Climbing right turn direct YKM VORTAC. Thence. . . .

. . . .then climbing right turn to intercept YKM R-284 outbound to TITON INT and hold.
Continue climb in hold to MEA/MCA for route of flight. Then on (assigned route).

YAKIMA SEVEN DEPARTURE
(YKM7.YKM) 10NOV16

YAKIMA, WASHINGTON
YAKIMA AIR TERMINAL/MCALLISTER FIELD (YKM)