

VORTAC YKM 116.0 Chan 107	APP CRS 251°	Rwy Idg TDZE Apt Elev N/A N/A 1099
---	------------------------	--

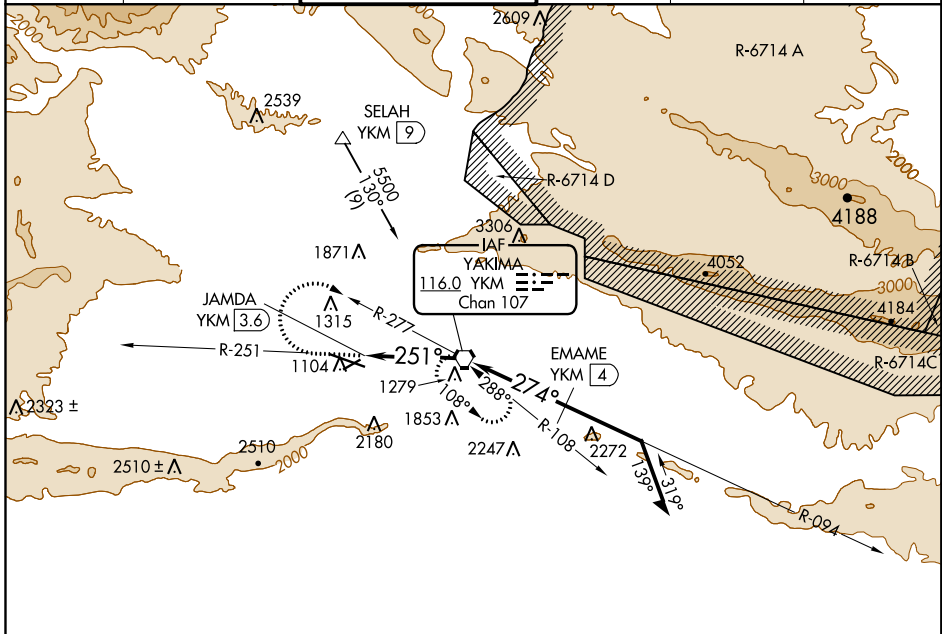
VOR-A

YAKIMA AIR TERMINAL/MCALLISTER FIELD (YKM)

▼ DME required.
▲ Circling not authorized south of Rwy 9-27.
 When local altimeter setting not received, procedure NA.

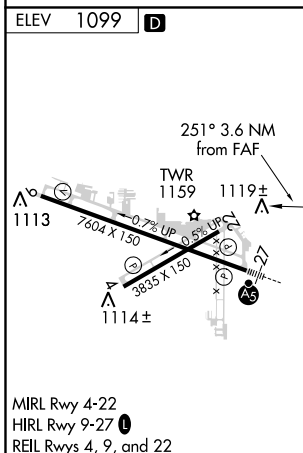
MISSED APPROACH: Climb to 2600 via YKM VORTAC R-251 then climbing right turn to 4600 via YKM VORTAC R-277 to YKM VORTAC and hold, continue climb-in-hold to 4600.

ATIS 125.25	CHINOOK APP CON* 123.8 263.15	YAKIMA TOWER* 133.25 (CTAF) 257.8	GND CON 121.9	CLNC DEL 121.9	UNICOM 122.95
-----------------------	---	---	-------------------------	--------------------------	-------------------------

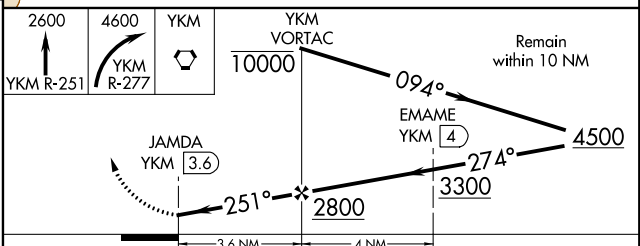
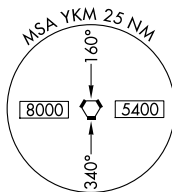


NW-1, 16 JUL 2020 to 13 AUG 2020

NW-1, 16 JUL 2020 to 13 AUG 2020



MIRL Rwy 4-22
 HIRL Rwy 9-27
 REIL Rwys 4, 9, and 22



FAF to MAP 3.6 NM					
Knots	60	90	120	150	180
Min:Sec	3:36	2:24	1:48	1:26	1:12
☑ CIRCLING	1840-1 741 (800-1)	1840-1¼ 741 (800-1¼)	1940-2½ 841 (900-2½)	2280-3 1181 (1200-3)	

YAKIMA, WASHINGTON
 Amdt 7A 18JUN20

YAKIMA AIR TERMINAL/MCALLISTER FIELD (YKM)

46°34'N-120°33'W

VOR-A