

WAAS CH 90512 W27A	APP CRS 274°	Rwy Idg TDZE Apt Elev	7604 1068 1099
--	------------------------	-----------------------------	---

RNAV (GPS) X RWY 27

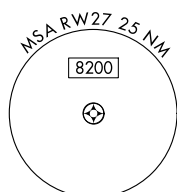
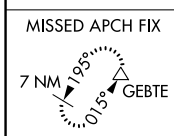
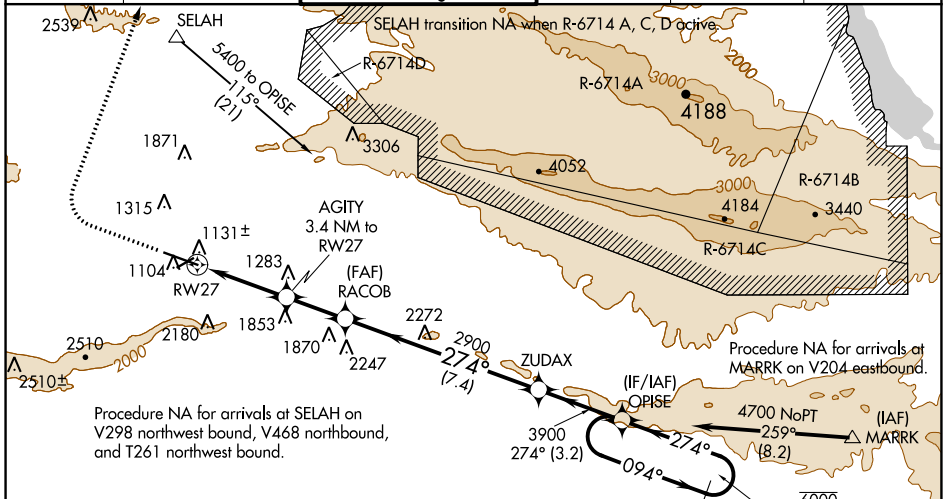
YAKIMA AIR TERMINAL/MCALLISTER FIELD (YKM)

RNP APCH:
 ▼ Circling NA south of Rws 9 and 27.
 ▲ For inop ALS, increase LPV all Cats visibility to 1¾ SM.
 *RVR 1800 authorized with use of FD or AP or HUD to DA.

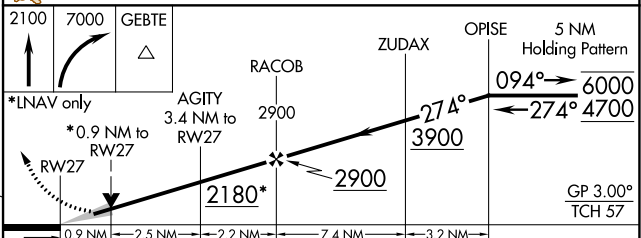
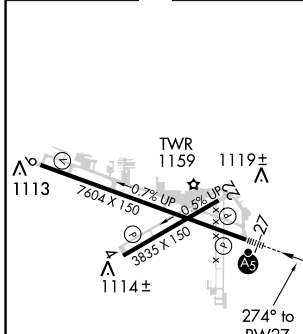
MALSRL
 AS

MISSED APPROACH: Climb to 2100 then climbing right turn to 7000 direct GEBTE and hold. Continue climb-in-hold to 7000. *Missed approach requires minimum climb of 300 feet per NM to 3700. #Missed approach requires minimum climb of 300 feet per NM to 4900.

ATIS 125.25	CHINOOK APP CON* 123.8 263.15	YAKIMA TOWER* 133.25 (CTAF) 257.8	GND CON 121.9	CLNC DEL 121.9	UNICOM 122.95
-----------------------	---	---	-------------------------	--------------------------	-------------------------



ELEV 1099	D	TDZE 1068
-----------	----------	-----------



CATEGORY	A	B	C	D
LPV DA*	1268/24 200 (200-½)			
LPV DA	1668-1¼ 600 (600-1¼)			
LNNAV MDA#	1400/24	332 (400-½)	1400/26	332 (400-½)
LNNAV MDA	1720/24	652 (700-½)	1720-1¾	652 (700-1¾)
C CIRCLING	1720-1	621 (700-1)	1880-2¼ 781 (800-2¼)	2280-3 1181 (1200-3)

MIRL Rwy 4-22
 HIRL Rwy 9-27
 REL Rws 4, 9, and 22

NW-1, 16 JUL 2020 to 13 AUG 2020

NW-1, 16 JUL 2020 to 13 AUG 2020