

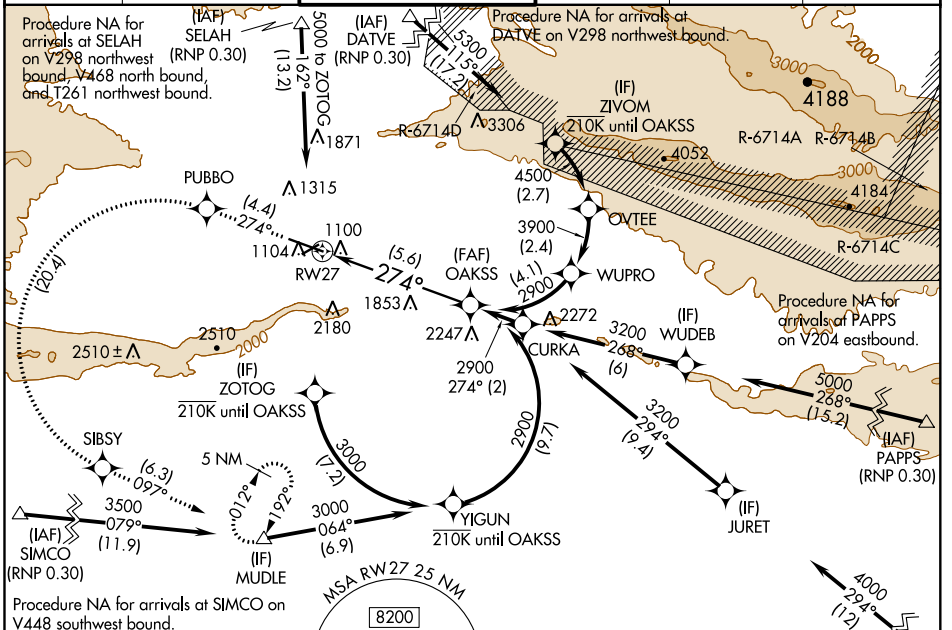
APP CRS 274°	Rwy Idg 7604
	TDZE 1068
	Apt Elev 1099

RNAV (RNP) Y RWY 27

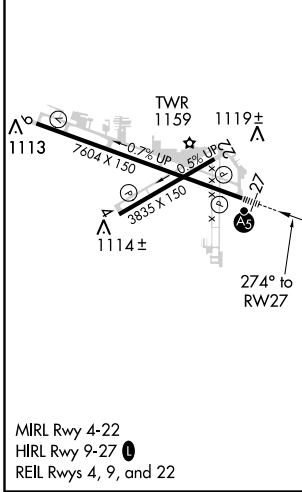
YAKIMA AIR TERMINAL/MCALLISTER FIELD (YKM)

<p>⚠ For uncompensated Baro-VNAV systems, procedure NA below -17°C (2°F) or above 54°C (130°F). RF required. GPS required. DATVE transition NA when R-6714 A, C, D active.</p>	<p>MAISR</p>	<p>MISSED APPROACH: Climb to 5100 on track 274° to PUBBO left turn to SIBSY and on track 097° to MUDLE and hold. * Missed approach requires minimum climb of 425 feet per NM to 3400.</p>
---	---------------------	--

ATIS 125.25	CHINOOK APP CON★ 123.8 263.15	YAKIMA TOWER★ 133.25 (CTAF) 257.8	GND CON 121.9	CLNC DEL 121.9	UNICOM 122.95
-----------------------	---	---	-------------------------	--------------------------	-------------------------

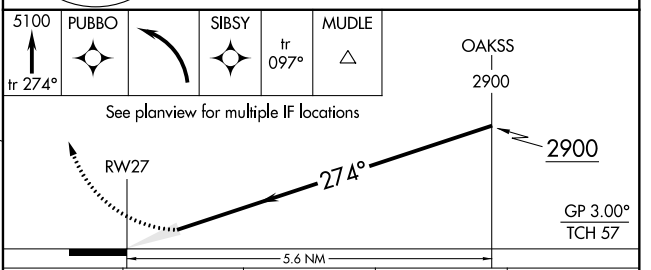


ELEV 1099 **D** TDZE 1068



Procedure NA for arrivals at SUNED on V4-298 southeast bound and V497 northeast bound.

(IAF) SUNED (RNP 0.30)



CATEGORY	A	B	C	D
RNP 0.30 DA*		1418/30	350 (400-5%)	
RNP 0.30 DA		1845-2¼	777 (800-2¼)	

AUTHORIZATION REQUIRED

NW-1, 16 JUL 2020 to 13 AUG 2020

NW-1, 16 JUL 2020 to 13 AUG 2020