

APP CRS	Rwy Idg	7604
094°	TDZE	1099
	Apf Elev	1099

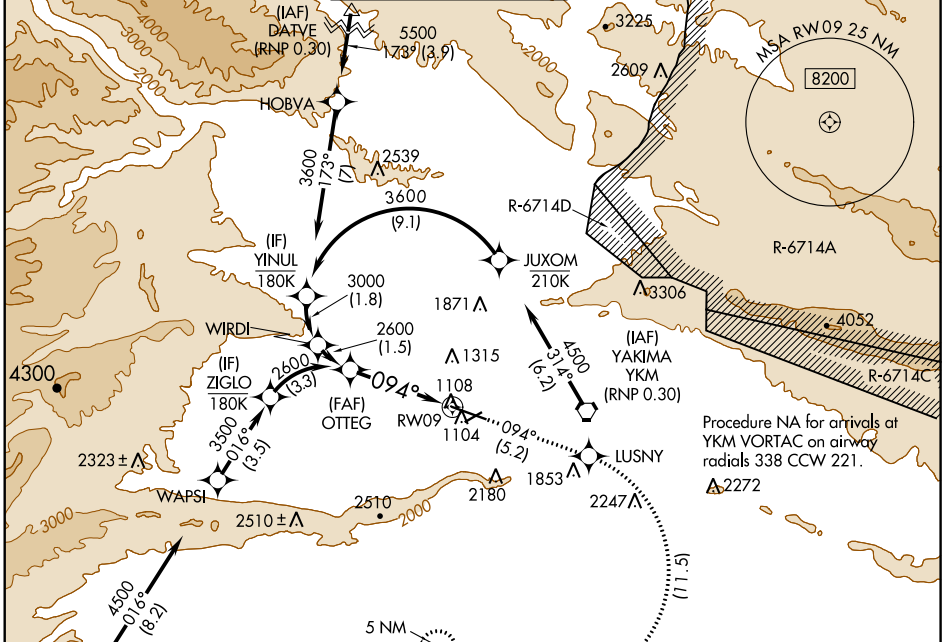
RNAV (RNP) RWY 9

YAKIMA AIR TERMINAL/MCALLISTER FIELD (YKM)

RF required. GPS required. For uncompensated Baro-VNAV systems, procedure NA below -17°C (2°F) or above 45°C (113°F).
*** Missed approach requires a minimum climb of 425 feet per NM to 3000.**

MISSED APPROACH: Climb to 5100 on track 094° to LUSNY right turn to CUSOM and on track 246° to MUDLE and hold.

ATIS 125.25	CHINOOK APP CON * 123.8 263.15	YAKIMA TOWER * 133.25 (CTAF) 0 257.8	GND CON 121.9	CLNC DEL 121.9	UNICOM 122.95
-----------------------	--	--	-------------------------	--------------------------	-------------------------

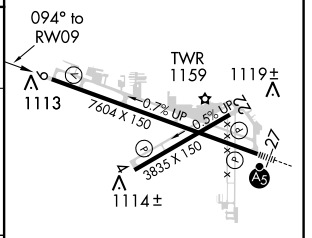
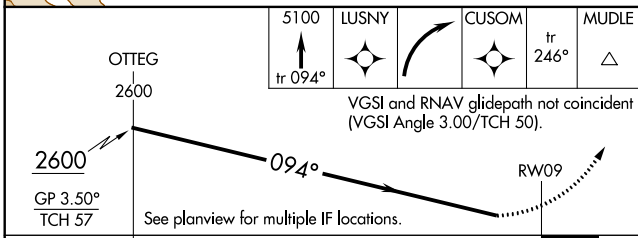


NW-1, 16 JUL 2020 to 13 AUG 2020

NW-1, 16 JUL 2020 to 13 AUG 2020

ELEV 1099	D	TDZE 1099
-----------	----------	-----------

Procedure NA for arrivals at YKM VORTAC on airway radials 338 CCW 221. **▲2272**



OTTEG 2600	5100 tr 094°	LUSNY	CUSOM	MUDE tr 246°
VGS1 and RNAV glidepath not coincident (VGS1 Angle 3.00/TCH 50).				
See planview for multiple IF locations.				
3.9 NM				
CATEGORY	A	B	C	D
RNP 0.30 DA*	1473-1	374 (400-1)		NA
RNP 0.30 DA	1934-2½	835 (900-2½)		NA

AUTHORIZATION REQUIRED

MRL Rwy 4-22
 HIRL Rwy 9-27
 REIL Rws 4, 9, and 22