

LOC/DME I-YKM <b>110.1</b>	APP CRS <b>274°</b>	Rwy Idg TDZE <b>7604</b> <b>1068</b>	Apt Elev <b>1099</b>
Chan <b>38</b>			

# ILS or LOC RWY 27

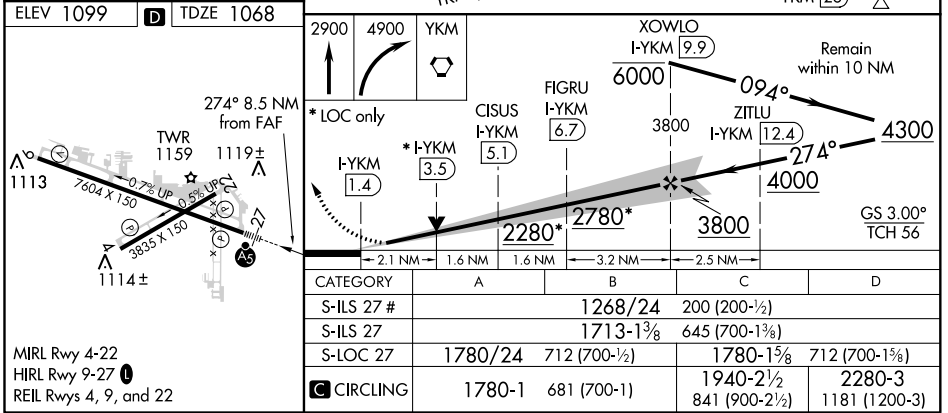
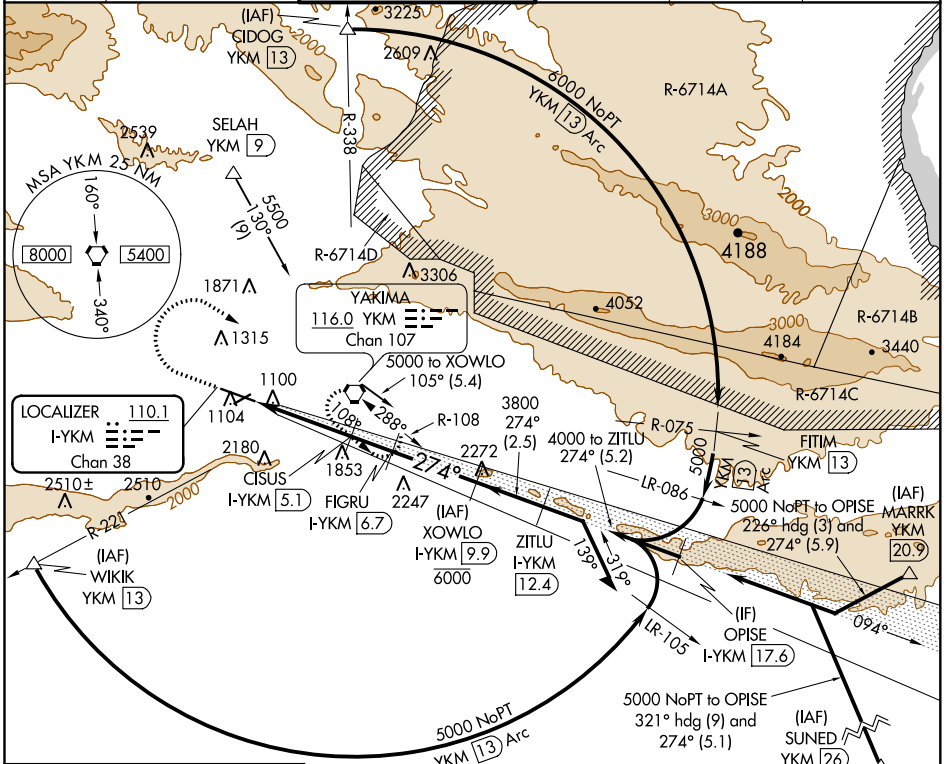
YAKIMA AIR TERMINAL/MCALLISTER FIELD (YKM)

DME required for procedure entry. DME required for LOC only.

⚠ When local altimeter setting not received, procedure NA. Circling NA south of Rws 9 and 27. For inop ALS, increase S-LOC 27 Cats C/D visibility to 2 SM. For inop ALS, increase S-ILS 27 all Cats visibility to 1½ SM. #RVR 1800 authorized with use of FD or AP or HUD to DA.

MALSR MISSED APPROACH: Climb to 2900 then climbing right turn to 4900 direct YKM. VORTAC and hold, continue climb-in-hold to 4900. # Missed approach requires minimum climb of 275 feet per NM to 3600.

ATIS <b>125.25</b>	CHINOOK APP CON* <b>123.8 263.15</b>	YAKIMA TOWER* <b>133.25 (CTAF) 0 257.8</b>	GND CON <b>121.9</b>	CLNC DEL <b>121.9</b>	UNICOM <b>122.95</b>
-----------------------	---	---	-------------------------	--------------------------	-------------------------



NW-1, 16 JUL 2020 to 13 AUG 2020

NW-1, 16 JUL 2020 to 13 AUG 2020