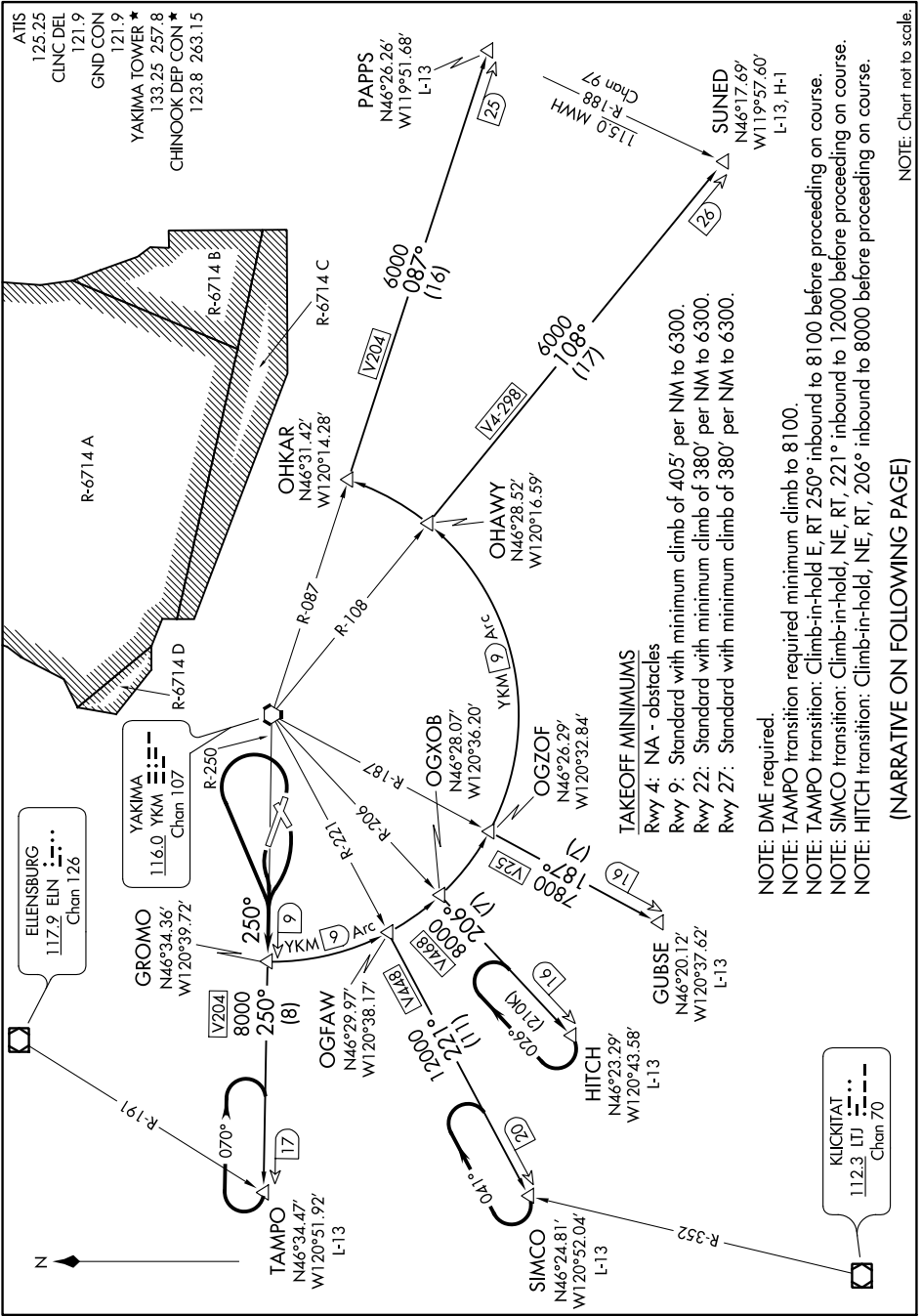


GROMO FOUR DEPARTURE

NW-1, 16 JUL 2020 to 13 AUG 2020



GROMO FOUR DEPARTURE

TAKEOFF MINIMUMS
 Rwy 4: NA - obstacles
 Rwy 9: Standard with minimum climb of 405' per NM to 6300.
 Rwy 22: Standard with minimum climb of 380' per NM to 6300.
 Rwy 27: Standard with minimum climb of 380' per NM to 6300.

NOTE: DME required.
NOTE: TAMPO transition required minimum climb to 8100.
NOTE: TAMPO transition: Climb-in-hold E, RT 250° inbound to 8100 before proceeding on course.
NOTE: SIMCO transition: Climb-in-hold, NE, RT, 221° inbound to 12000 before proceeding on course.
NOTE: HITCH transition: Climb-in-hold, NE, RT, 206° inbound to 8000 before proceeding on course.

(NARRATIVE ON FOLLOWING PAGE)

NOTE: Chart not to scale.

NW-1, 16 JUL 2020 to 13 AUG 2020