

WAAS CH 82305 W17A	APP CRS 174°	Rwy Idg TDZE Apt Elev	6893 1740 1749
--	------------------------	-----------------------------	---

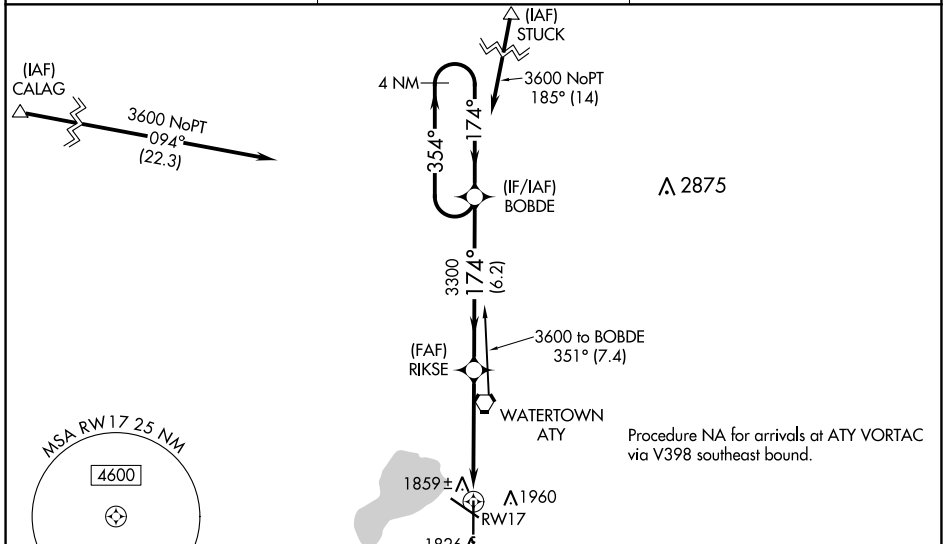
RNAV (GPS) RWY 17

WATERTOWN RGNL (ATY)

⚠ Baro-VNAV NA when using Brookings altimeter setting. DME/DME RNP-0.3 NA.
⚠ For uncompensated Baro-VNAV systems, LNAV/VNAV NA below -18°C (0°F) or above 45°C (113°F). VDP NA when using Brookings altimeter setting. When local altimeter setting not received, use Brookings altimeter setting and increase all DAs 105 feet and all MDAs 120 feet; increase Circling Cat C and D visibility ¼ SM.

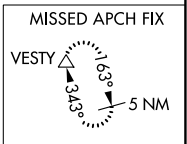
MISSED APPROACH: Climb to 4000 direct APEDE and via 154° track to VESTY and hold.

ASOS 126.625	MINNEAPOLIS CENTER 128.5 306.2	UNICOM 123.05 (CTAF) 📻
------------------------	--	---



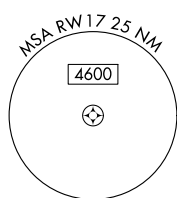
△ 2875

Procedure NA for arrivals at ATY VORTAC via V398 southeast bound.

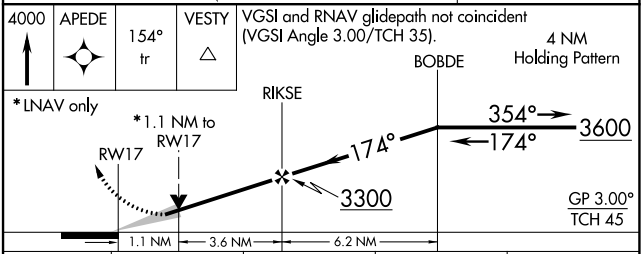
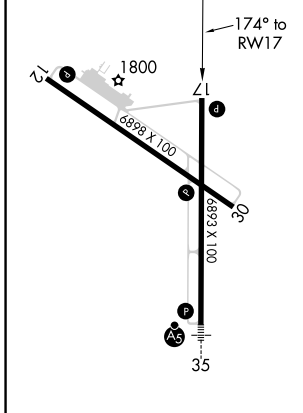


NC-1, 16 JUL 2020 to 13 AUG 2020

NC-1, 16 JUL 2020 to 13 AUG 2020



ELEV 1749	D	TDZE 1740
-----------	----------	-----------



CATEGORY	A	B	C	D
LPV DA	2054-1		314 (400-1)	
LNAV/VNAV DA	2129-1¼		389 (400-1¼)	
LNAV MDA	2120-1		380 (400-1)	
C CIRCLING	2260-1		2500-2¼ 751 (800-2¼)	2500-2½ 751 (800-2½)

REIL Rwy 12, 17 and 30 **📻**
 HIRL Rwy 17-35 **📻**
 MIRL Rwy 12-30 **📻**