

WAAS CH 53405 W12A	APP CRS 118°	Rwy Idg TDZE Apt Elev	6898 1749 1749
--	------------------------	-----------------------------	---

RNAV (GPS) RWY 12

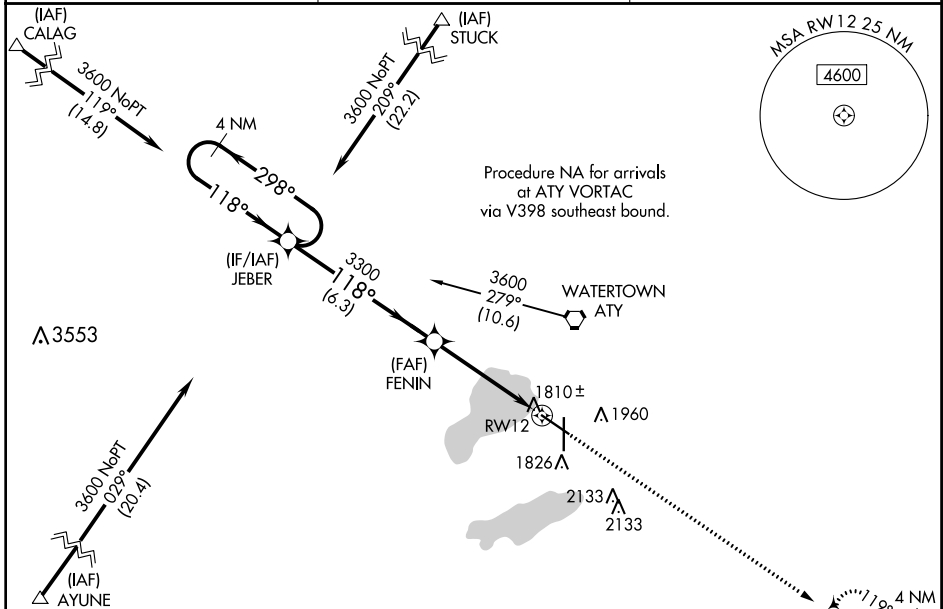
WATERTOWN RGNL (ATY)

RNP APCH.

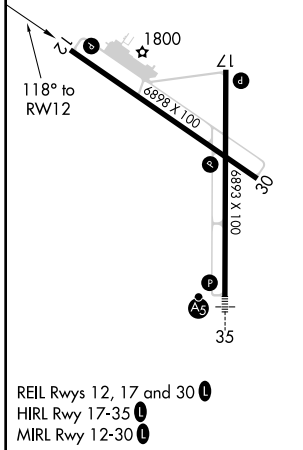
▼ For uncompensated Baro-VNAV systems, LNAV/VNAV NA below -18°C (0°F) or above 45°C (113°F). Rwy 12 helicopter visibility reduction below ¾ SM NA. When local altimeter setting not received, use Brookings altimeter setting and increase all DA 105 feet and all MDA 120 feet, increase LNAV Cat C and D visibility ¾ SM and Circling Cat C/D visibility ½ SM. VDP NA when using Brookings altimeter setting. Baro-VNAV NA when using Brookings altimeter setting.

MISSED APPROACH: Climb to 3600 direct DELDE and hold.

ASOS 126.625	MINNEAPOLIS CENTER 128.5 306.2	UNICOM 123.05 (CTAF) 0
------------------------	--	----------------------------------



ELEV 1749	D TDZE 1749
-----------	--------------------



	4 NM Holding Pattern		JEBER	FENIN	3600 DELDE
	3600	← 298°	118° →	118°	*LNAV only
	GP 3.00°		3300	*1 NM to RWY 12	RWY 12
	TCH 48		6.3 NM	3.7 NM	1 NM
CATEGORY	A	B	C	D	
LPV DA		2021-1	272 (300-1)		
LNAV/VNAV DA		2076-1½	327 (400-1½)		
LNAV MDA		2100-1	351 (400-1)		
C CIRCLING	2260-1	511 (600-1)	2500-2¼ 751 (800-2¼)	2500-2½ 751 (800-2½)	

NC-1, 16 JUL 2020 to 13 AUG 2020

NC-1, 16 JUL 2020 to 13 AUG 2020