

LOC/DME I-ATY <b>111.9</b> Chan <b>56</b>	APP CRS <b>354°</b>	Rwy Idg <b>6893</b> TDZE <b>1745</b> Apt Elev <b>1749</b>
---	------------------------	---

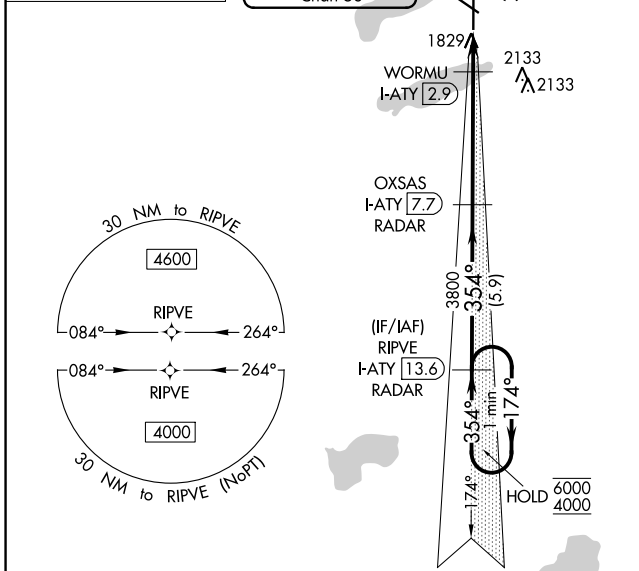
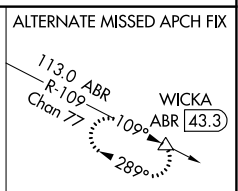
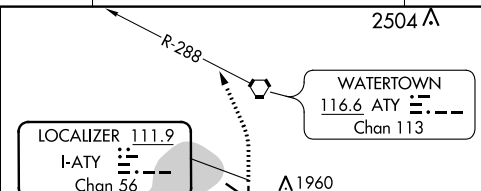
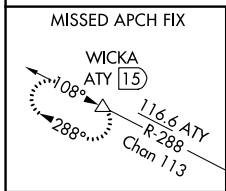
# ILS or LOC RWY 35

WATERTOWN RGNL (ATY)

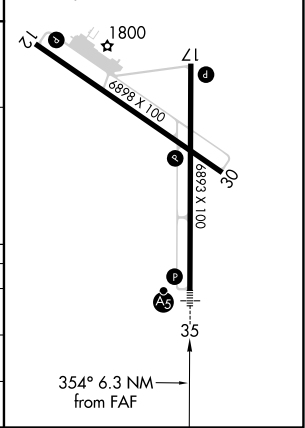
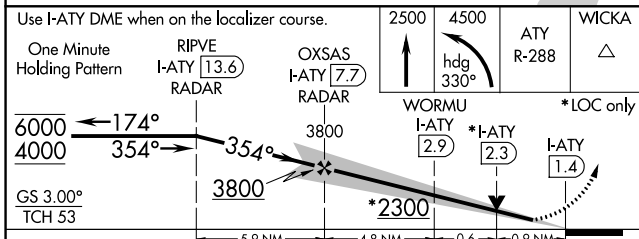
RNAV 1-GPS or RADAR required for procedure entry. DME required.

MALSRL  
MISSED APPROACH: Climb to 2500 then climbing left turn to 4500 on heading 330° and ATY R-288 to WICKA/ATY 1.5 DME and hold.

ASOS <b>126.625</b>	MINNEAPOLIS CENTER <b>128.5 306.2</b>	UNICOM <b>123.05 (CTAF)</b>
------------------------	--	--------------------------------



ELEV 1749	TDZE 1745
REIL Rwy 12, 17 and 30	
HIRL Rwy 17-35	
MIRL Rwy 12-30	



CATEGORY	A	B	C	D
S-ILS 35		1945-1/2	200 (200-1/2)	
S-LOC 35		2080-1/2	335 (400-1/2)	
CIRCLING	2260-1	511 (600-1)	2500-2 1/4 751 (800-2 1/4)	2500-2 1/2 751 (800-2 1/2)

NC-1, 16 JUL 2020 to 13 AUG 2020

NC-1, 16 JUL 2020 to 13 AUG 2020