

LOC/DME I-SLE <b>110.3</b> Chan 40	APP CRS <b>313°</b>	Rwy Idg <b>5811</b> TDZE <b>214</b> Apt Elev <b>214</b>
--	------------------------	---

# LOC Y RWY 31

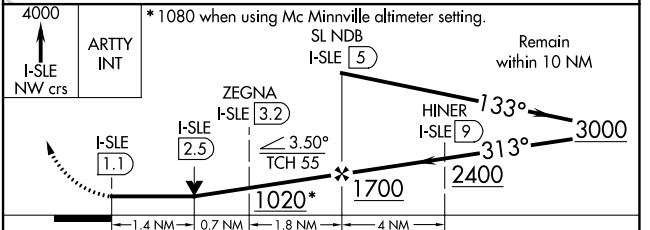
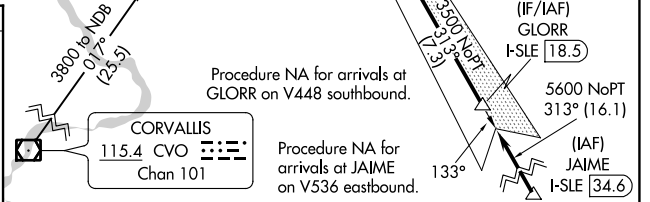
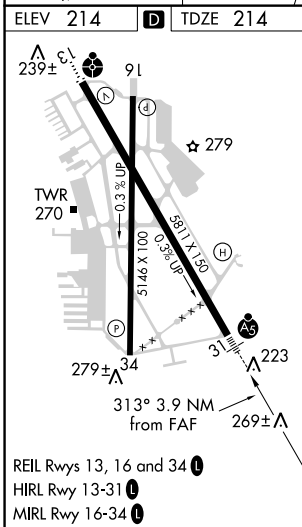
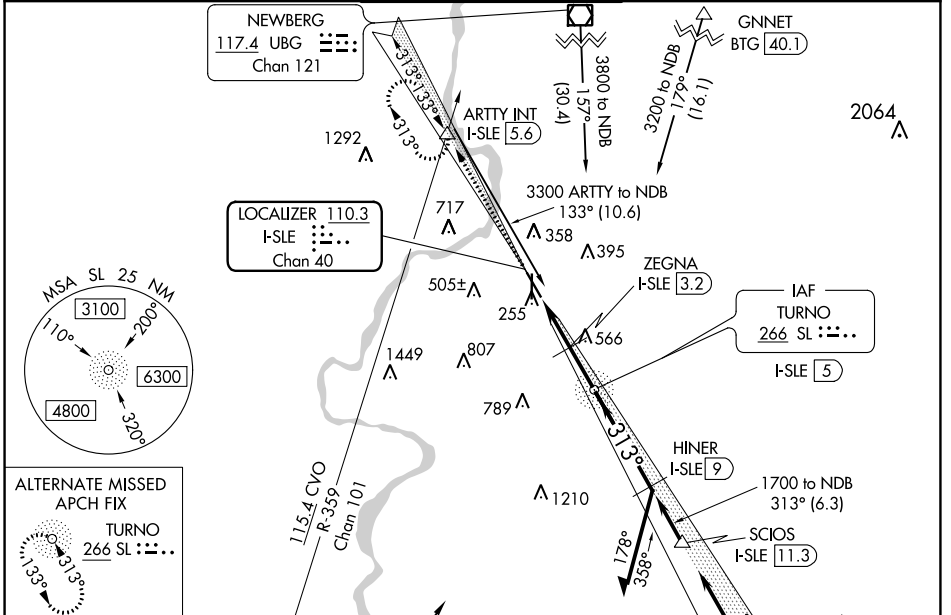
MCNARY FIELD (SLE)

DME required. RADAR required.

⚠ When local altimeter setting not received, use Mc Minnville altimeter setting: increase all MDA 60 feet; increase S-LOC 31 Cat C and D visibility to 1½ SM, Circling Cat C visibility to 2½ SM. For inop ALS, increase S-LOC 31 Cats C and D visibility to 1½ SM. For inop ALS when using Mc Minnville altimeter setting, increase S-LOC 31 Cats C and D visibility to 1¾ SM. VDP NA when using Mc Minnville altimeter setting.

MALSRS MISSED APPROACH: Climb to 4000 on I-SLE Localizer NW course to ARTY INT/ I-SLE 5.6 DME and hold, continue climb-in-hold to 4000.

ATIS <b>124.55</b>	SEATTLE CENTER <b>125.8 291.7</b>	SALEM TOWER ★ <b>119.1 (CTAF) 0 257.2</b>	GND CON <b>121.9</b>	UNICOM <b>122.95</b>
-----------------------	--------------------------------------	--	-------------------------	-------------------------



CATEGORY	A	B	C	D
S-LOC 31	780/24	566 (600-½)	780-1¼	566 (600-1¼)
CIRCLING	900-1 686 (700-1)	960-1 746 (800-1)	1060-2½ 846 (900-2½)	1260-3 1046 (1100-3)

NW-1, 16 JUL 2020 to 13 AUG 2020

NW-1, 16 JUL 2020 to 13 AUG 2020