

LOC/DME I-SZK 111.1 Chan 48	APP CRS 072°	Rwy Idg 6800 TDZE 1175 Apt Elev 1175
---	------------------------	---

LDA Y RWY 6

ROANOKE-BLACKSBURG RGNL/WOODRUM FIELD (R.O.A)

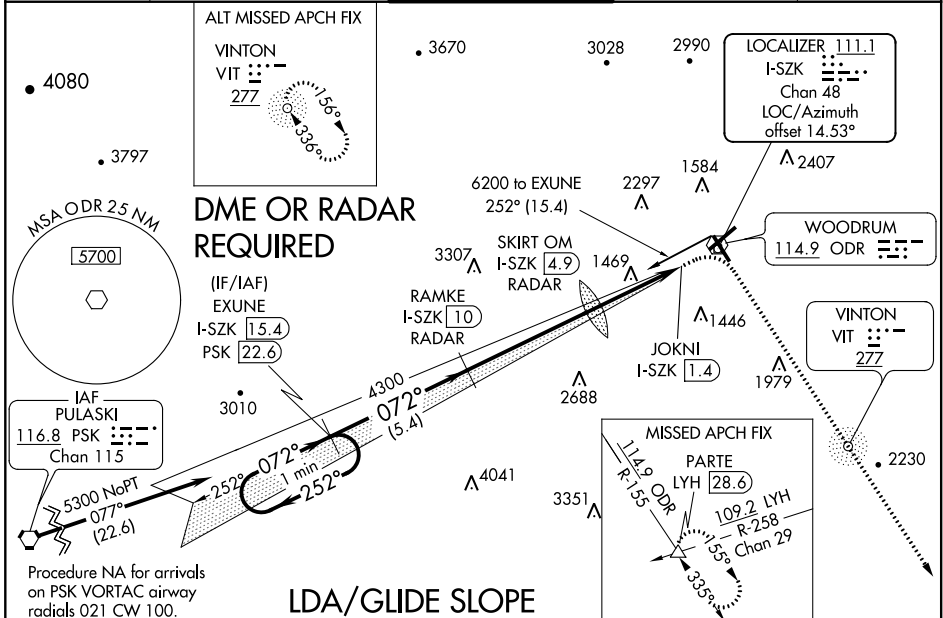
⚠ Inop table does not apply to S-LDA 6 Cats C and D. Circling NA NW of Rwy 6-24. For inop MALSR, increase S-LDA/GS 6 all Cats visibility to 1½.

⚠ -13° C

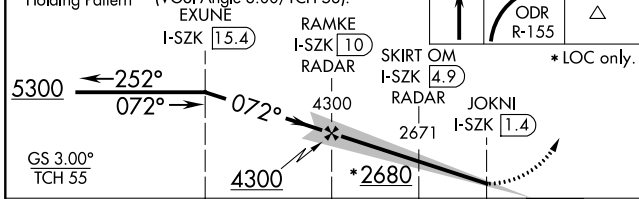
MALSR

MISSED APPROACH: Climb to 1800 then climbing right turn to 5000 on ODR VOR R-155 to PARTE INT/LYH 28.6 DME and hold, continue climb-in-hold to 5000.

ATIS 132.375	ROANOKE APP CON 126.9 339.8	ROANOKE TOWER 118.3 257.8	GND CON 121.9 257.8	CLNC DEL 119.7
------------------------	---------------------------------------	-------------------------------------	-------------------------------	--------------------------



One Minute Holding Pattern	VGSI and LDA glidepath not coincident (VGSI Angle 3.00/TCH 58). EXUNE I-SZK 15.4	1800	5000	PARTE	ELEV 1175	TDZE 1175
----------------------------	---	------	------	-------	-----------	-----------



6800 X 150

TWR 1365

LOC/DME

REIL Rws 6 and 24
HIRL Rws 6-24 and 16-34

FAF to MAP 8.5 NM

Knots	60	90	120	150	180
Min:Sed	8:30	5:40	4:15	3:24	2:50

CATEGORY	A	B	C	D
S-LDA/GS 6	1615-1½		440 (500-1½)	
S-LDA 6	2680-1	1505 (1600-1)	2680-3	1505 (1600-3)
C CIRCLING	2680-1½ 1505 (1600-1½)	2680-1½ 1505 (1600-1½)	2680-3 1505 (1600-3)	2800-3 1625 (1700-3)
SKIRT OM/DME/RADAR				
S-LDA 6	1720-1	545 (600-1)	1720-1½	545 (600-1½)
C CIRCLING	1720-1½	545 (600-1½)	2420-3 1245 (1300-3)	2800-3 1625 (1700-3)

LDA Y RWY 6

NE-3, 16 JUL 2020 to 13 AUG 2020

NE-3, 16 JUL 2020 to 13 AUG 2020