

APP CRS	Rwy Idg	10300
258°	TDZE	1134
	Apt Elev	1135

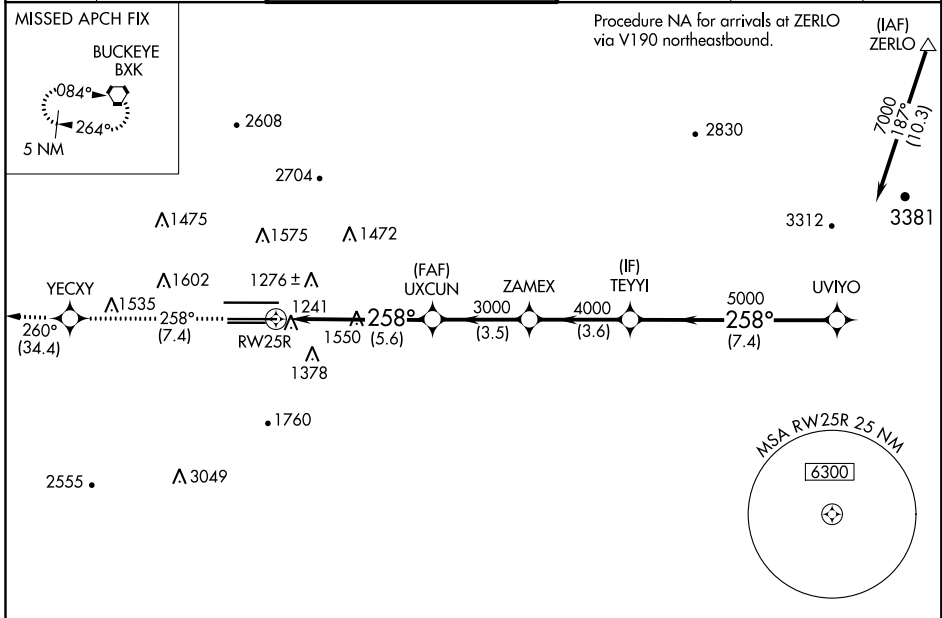
RNAV (RNP) Z RWY 25R

PHOENIX SKY HARBOR INTL (PHX)

Visibility reduction by helicopters NA. GPS required. For uncompensated Baro-VNAV systems, procedure NA below 1°C (34°F) or above 46°C (116°F). Simultaneous approach authorized with ILS or LOC Rwy 26. Use of FD or AP providing RNAV track guidance required during simultaneous operations.

MISSED APPROACH: Climb to 5000 via track 258° to YECCY and via track 260° to BKK VORTAC and hold.

D-ATIS	PHOENIX APP CON	PHOENIX TOWER	GND CON	CLNC DEL	CPDLC
127.575	128.65 353.9	118.7 278.8 (Rwy 8-26) 120.9 254.3 (Rwy 7L-25R, 7R-25L)	119.75 269.2 (N) 132.55 269.2 (S)	118.1 269.2	



SW-4, 16 JUL 2020 to 13 AUG 2020

SW-4, 16 JUL 2020 to 13 AUG 2020

ELEV 1135	TDZE 1134
5000 fr 258°	YECCY fr 260°
VGSI and RNAV glidepath not coincident (VGSI Angle 3.00/TCH 70).	
Procedure Turn NA	
UVIYO 7000 TEYYI 5000 ZAMEX 4000 UXCUN 3000 RW25R 3000	
GP 3.00° TCH 55	
5.6 NM, 3.5 NM, 3.6 NM, 7.4 NM	
CATEGORY	A B C D
RNP 0.20 DA	1597-1½ 463 (500-1½)
RNP 0.30 DA	1622-1¾ 488 (500-1¾)
AUTHORIZATION REQUIRED	

