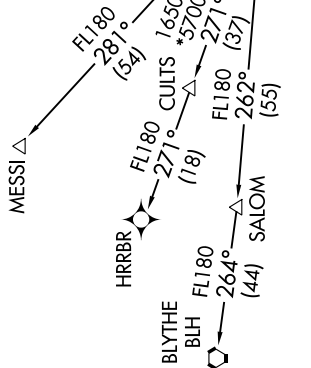


SW-4, 16 JUL 2020 to 13 AUG 2020

**TOP ALTITUDE:**  
8000

D-AITS 127.575  
CLNC DEL 118.1 269.2  
CPDLC  
GND CON 119.75 269.2 (NORTH)  
132.55 269.2 (SOUTH)  
PHOENIX TOWER 118.7 278.8 (Rwy 8-26)  
120.9 254.3 (Rwys 7L-25R, 7R-25L)  
PHOENIX DEP CON 126.8 269.6



**DEPARTURE ROUTE DESCRIPTION**

**TAKEOFF RUNWAYS 7L/R, 8:** Climb heading 078° to 1635, then direct FUTEP, then on track 132° to AZCRD, then on track 199° to USEYE, then on track 264° to cross MASVE at/above 7000 and at/below 220K, then on track 264° to OAKLI, then on track 268° to KEENS, thence. . . .

**TAKEOFF RUNWAYS 25L/R:** Climb heading 258° to intercept course 240° to WULKO, then on track 268° to KEENS, thence. . . .

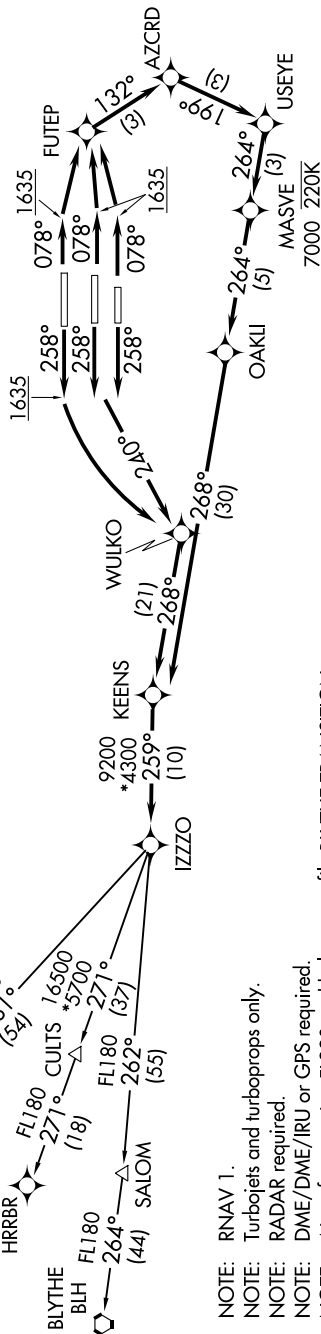
**TAKEOFF RUNWAY 26:** Climb heading 258° to 1635, then left turn direct WULKO, then on track 268° to KEENS, thence. . . .

. . . on track 259° to IZZO, then on (transition). Maintain 8000, expect higher altitude 3 minutes after departure.

**BLYTHE TRANSITION (KEENS2.BLH)**

**HRRBR TRANSITION (KEENS2.HRRBR)**

**MESSI TRANSITION (KEENS2.MESSI)**



**TAKEOFF MINIMUMS**

Rwys 7L/R, 8: Standard.

Rwys 25L/R, 26: Standard with minimum climb of 500' per NM to 1635.

Requesting FL240

- NOTE: RNAV 1.
- NOTE: Turboprops and turboprops only.
- NOTE: RADAR required.
- NOTE: DME/DME/IRU or GPS required.
- NOTE: Aircraft requesting FL220 and below must file BLYTHE TRANSITION.
- NOTE: Turboprops landing LAX, file MESSI TRANSITION.
- NOTE: Aircraft landing other than LAX and turboprops landing at LAX: Requesting FL240 and above, file HRRBR TRANSITION.

NOTE: Chart not to scale.

SW-4, 16 JUL 2020 to 13 AUG 2020